



Cleveland
Metroparks

**COME OUT
AND PLAY**



HUNTINGTON RESERVATION

JULY 9, 2015



Lake Erie

HUNTINGTON RESERVATION

Bay Village

Westlake

Rocky River



Pier 4

Pier 3

Pier 2

Pier 1

Lake Erie

Huntington Beach

The Water Tower Area

Lake Picnic Shelter

Lake Rd

Tunnel

Overflow Parking

Sledding Area

Baycrafters

Huntington Playhouse

Fuller House

Huntington Management Center and Ranger Office

HUNTINGTON RESERVATION

Porter Creek

Kiosk

Ball Field

Wolf Reserved Canopy

Shelterhouse

Lake Erie Nature and Science Center

Cleveland Metroparks

Reservation

Restricted

Detailed Hydro

Ditch

Non-Stream Waterway

Stream

Stream or River

Pond

Lake Erie

Other Wet Areas

Contours

Index Contour

Intermediate Contour

Trails

ADA, APT

Bridle

Hiking

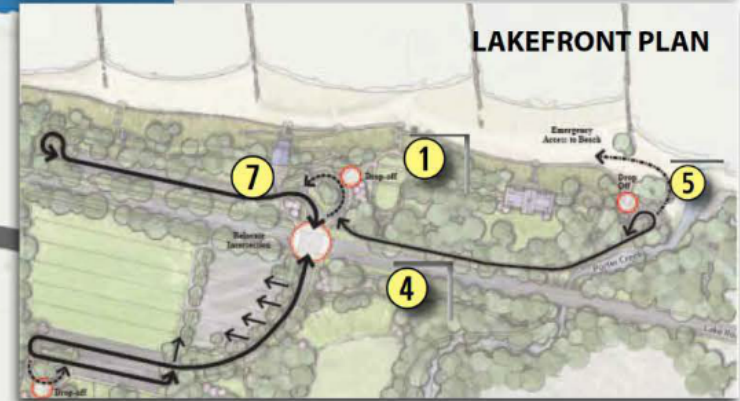
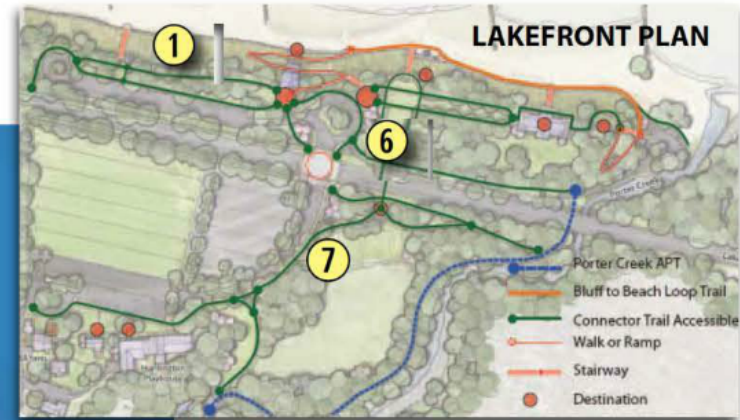
Mountain Bike Trails

Connector Trail



CLEVELAND METROPARKS 2020

HUNTINGTON RESERVATION - Concept Plan



LEGEND

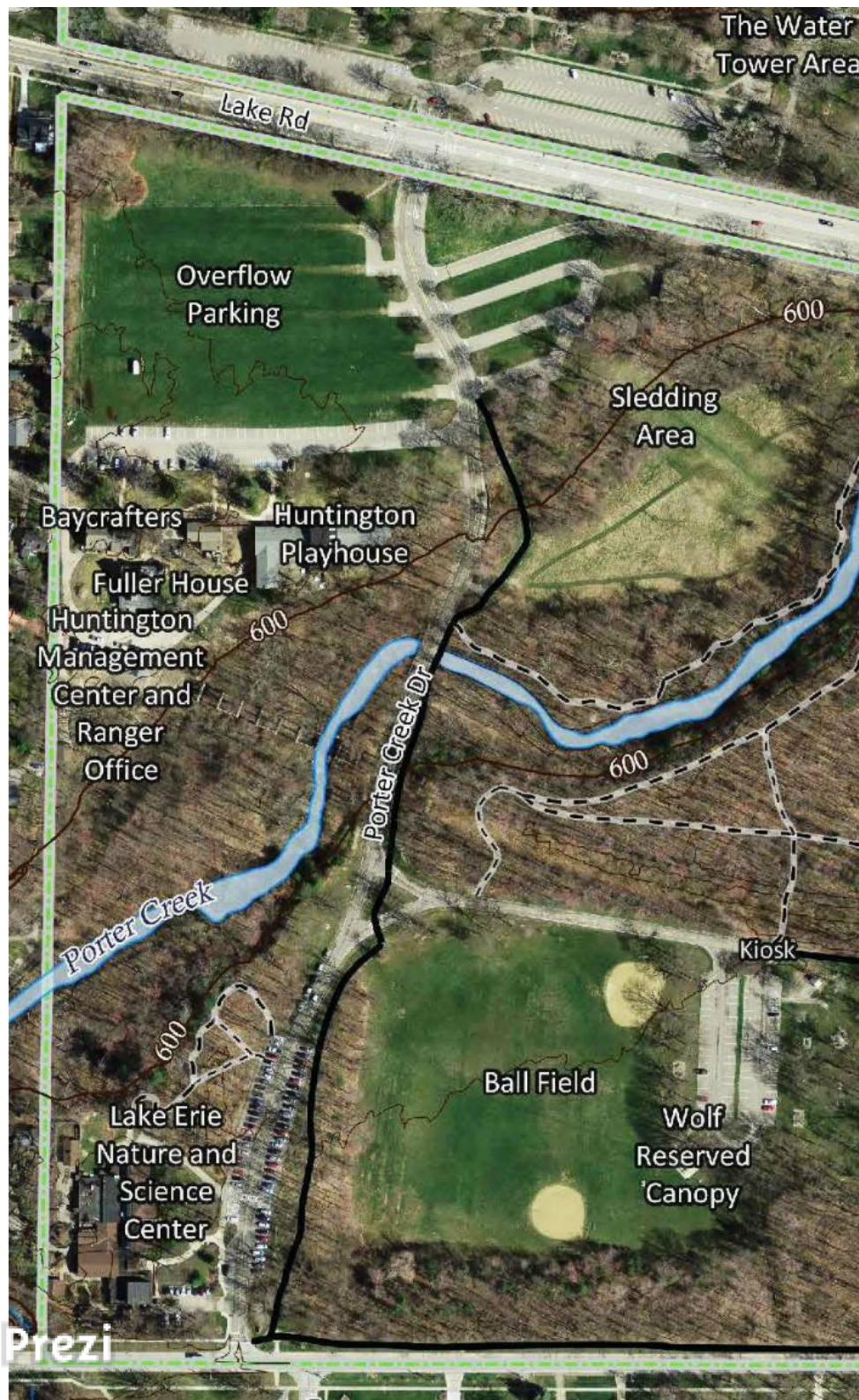
- | | |
|------------------------|-----------------------------|
| RESERVATION BOUNDARIES | HYDROLOGY |
| RESTRICTED ACCESS | HYDROLOGY |
| FACILITY FOOTPRINTS | SURVEYED WETLANDS |
| ROADS AND PARKING | NATIONAL WETLANDS INVENTORY |
| TRAILS | RECOMMENDATIONS |
| APT | CORE PROTECTION AREA |
| BRIDLE | TRAIL ENHANCEMENT |
| HIKING | BUILDING IMPROVEMENT |
| LAND COVER | OUTDOOR RECREATION |
| TREES | ENTRY/ARRIVAL |
| GRASS AND MEADOWS | REGIONAL CONNECTION |
| | NEIGHBORHOOD CONNECTION |



Strengthen affiliate use areas into a comprehensive campus with integrated trails and outdoor activity areas including significant beach, circulation and operational enhancements.

Recommendations	Key: 1 = highest, 2 = medium, 3 = lowest, OG = On-Going, NR = Natural Resources, PL = Planning, OE = Outdoor Education, PM = Park Manager, TR = Trail Coordinator, RE = Real Estate, Des = Design, Eng = Engineering, PO = Park Operations, G = Golf	Strategic Plan Objective	Priority
① Core Conservation Areas			
HU1.1 • Protect and rehabilitate beach bluff and river mouth.		2.2,3.1	1
HU1.2 • Focus ecological restoration activities along Porter Creek and align programming with watershed activities (wall removal, flood plain enhancements).		3.1	1
HU1.3 • Re-grade and re-vegetate slopes of oak savanna.		3.1	2
HU1.4 • Habitat enhancements for open field areas.		3.1	2
② Regional Connections			
HU2.1 • Work with local community on bikeway connections including regional Lakefront Bikeway.		4.3	3
③ Neighborhood Connections			
HU3.1 • Extend APT to picnic and day use area. Connect to city bike network on all sides and promote arrival to park via bike and walk.		2.2,4.1	2
④ Activity Hubs			
HU4.1 • Develop campus concept in conjunction with BayArts and Play House, utilize space and/or facility from relocated maintenance facility to provide additional program opportunities and improve connection to surrounding landscape, and Porter Creek and outdoor activity connections to LENS C.		7.5	2
⑤ Outdoor Recreation/ Health & Wellness Opportunities			
HU5.1 • Develop outdoor commons to feature Porter Creek, provide gathering and activity space.		4.1,7.3	2
HU5.2 • Evaluate kayak/canoe access for improvement (drop off and put in) and potential of promoting alternative site.		7.3	3
HU5.3 • Link activity areas with trails that feature public art & ecological restoration of creek.		7.3	3
HU5.4 • Strengthen historic corridor as interpretive feature and potential public art trail.		7.3	3
⑥ Facilities			
HU6.1 • Relocate management center from arts campus to east edge of property and investigate potential to operate in cooperation with city maintenance functions and share facilities/equipment and to reduce congestion and use conflicts in art campus.		7.4	1
HU6.2 • Lakefront - facility improvements to include new restrooms, staff areas, security, storage and program space.		7.3	1
HU6.3 • Work cooperatively with Bay Arts to provide for facility improvements for expanded offerings (pottery/ceramics), administrative space, and retail offerings.		7.3	2
HU6.4 • Improve permanent shelter at Wolf Picnic Area.		7.3	3
⑦ Roadways & Trails			
HU7.1 • Lakefront - simplify and improve safety for vehicular and pedestrian circulation, create arrival/drop off area, provide greater access to waterfront.		2.2,7.7	1
HU7.2 • Align Porter Creek Dr with the intersection of Beach Lane and Wolf Road and redesign entry.		7.7	1
HU7.3 • Consider option to eliminate public thru traffic on Porter Creek Drive Bridge (maintain for service & emergency use).		7.7	1
HU7.4 • Improve pedestrian and bike circulation to lakefront, segregate from vehicular traffic, add trail along Porter Creek, and improve tunnel.		7.7	1
HU7.5 • Improve LENS C parking layout to accommodate improved pedestrian circulation and arrival.		7.7	1
⑧ Ecosites			
HU8.1 • Work with local community and CCBH on Porter Creek watershed protection and restoration efforts.		3.2	1
⑨ Other			
HU9.1 • Actively pursue outside funding for beach, public use, management facilities.		7.3	1





Affiliates

- BAYarts
- Huntington Playhouse
- Lake Erie Nature and Science Center



The Campus Affiliates



Lake Erie Nature & Science Center

- Served 132,000 people 2014
- Completed \$4 million capital campaign upgrade & expansion wildlife rehab center and planetarium, doubling student participation



BAYarts



- Served 60,000+ visitors 2014
- Opened \$425,000 ceramics studio 2015
- Budget 2014-15 increased 22%



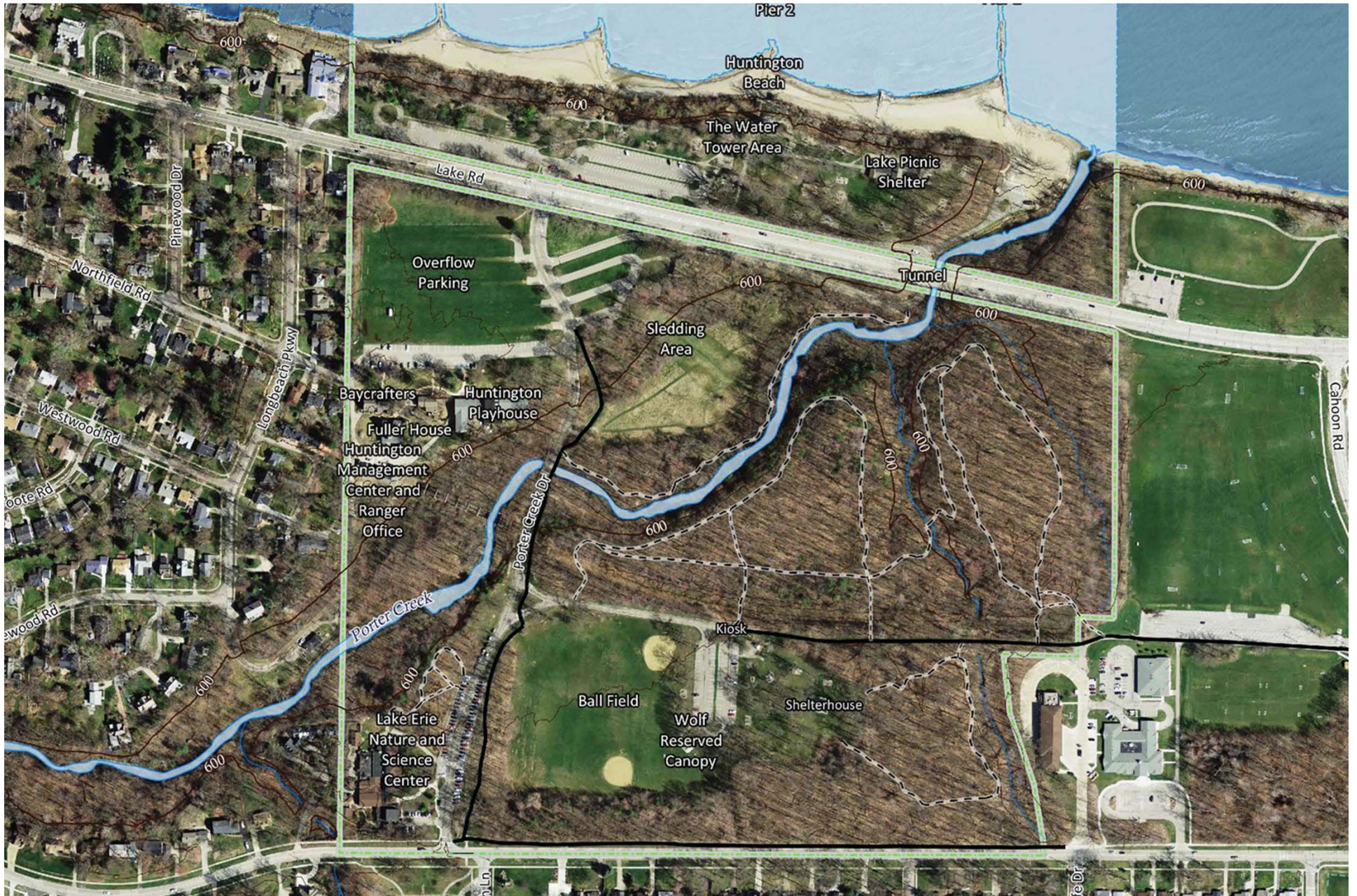


The Complete Works of William Shakespeare (Abridged)	CATCH ME IF YOU CAN	No S Plea We're British
2014 Season		
The 25th Annual Putnam County Spelling Bee	A MURDER Is ANNOUNCED	It's A Wonderful Life

Huntington Playhouse

- Served 7787 attendees 2014
- 5-6 shows per year
- 61 participants in children's theater

HUNTINGTON RESERVATION



VIEW FROM LAKE ROAD / GRASS PARKING LOOKING SOUTH




VIEW FROM PARKING LOOKING NORTH TO THE LAKE



HUNTINGTON PLAYHOUSE, TRATTORIA, AND BAYARTS



A photograph of the Huntington Playhouse building. The building is a long, single-story structure with a light-colored, possibly stone or concrete, central section and corrugated metal siding on the wings. The name "Huntington Playhouse" is mounted on the central section in a black, gothic-style font. A red door is centered under the name, with a small set of steps leading up to it. To the right of the red door, a person is standing on the lawn. The building is flanked by large, mature green trees. The foreground is a well-maintained green lawn, and a paved road is visible at the bottom of the frame. The sky is overcast with grey clouds.

Huntington
Playhouse















