



CHEERS

Cleveland Harbor Eastern Embayment Resilience Strategy

Design Phase Stakeholder Kick-off

CHEERS Design Team:
Arup, KS Associates, WRT,
Davey, ASC Group, TTL Associates

Dec 16, 2022



Agenda

Design phase stakeholder kick-off

- Project Recap
- Introduction to the Design Team
- Project Goals and Scope
- Project Milestone Schedule
- Engagement Plan Update
- Approach to Engagement, Ecology, Marine Design
- Next Steps



Welcome Back!

Picking up on the 2020-2021 Study of the east side lakefront



Visit www.clevelandmetroparks.com/cheers for more information and the complete study

CHEERS quick re-cap

the Partners



City of Cleveland



Ohio Department of Natural Resources



Ohio Department of Transportation



The Port of Cleveland



Cleveland Metroparks

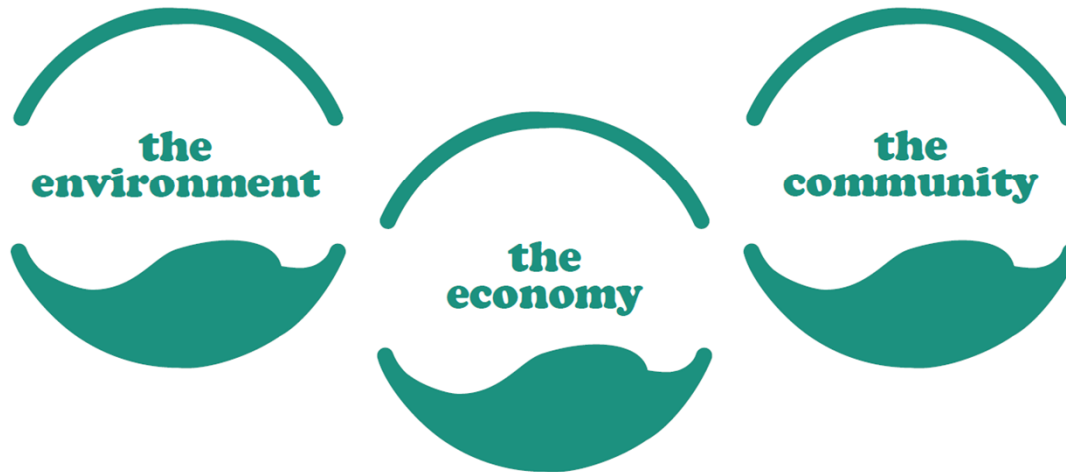


Black Environmental Leaders Association

- The original study was funded by the partners with 1:1 matching grant funds from the National Fish and Wildlife Foundation's National Coastal Resilience Fund (NFWF NCRF)
- The study focused on developing an **equitable** and **resilient** future for Cleveland's east side lakefront and centers existing residents
- The process engaged over **1,500** residents and stakeholders and was met with overwhelming support by the overall community

CHEERS quick re-cap

To improve the resiliency of the lakefront we need to consider:



- The partners successfully pursued additional grant funds for design and engineering to move the study towards implementation
- Work in 2022 included a public call for qualifications process, resulting in selection of the ARUP team
- The ARUP team includes key consultants from the initial study
- Nearly \$6M in grants and partner match will result in a **shovel-ready** project by 2025
- Ongoing **stakeholder and community engagement** is crucial as we refine the vision and embark on technical design

Introductions

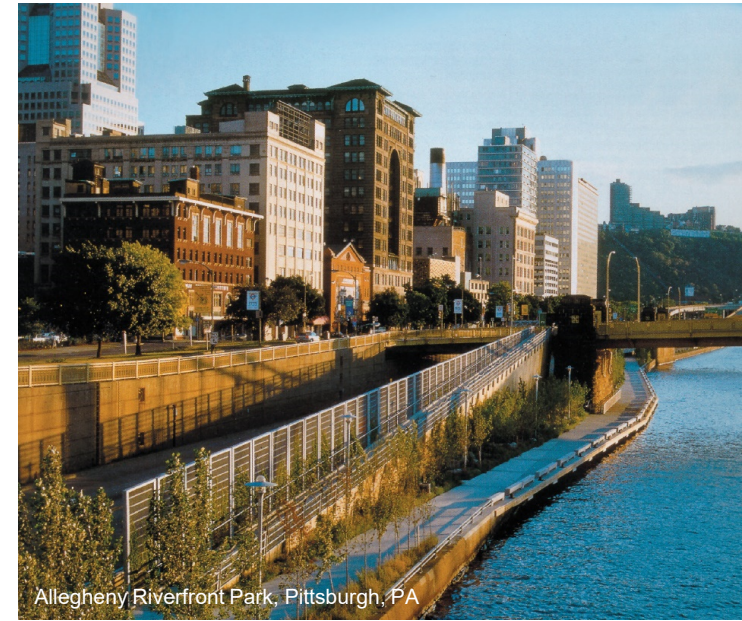
Global Experience



Canary Wharf, London, England



Hunters Point South, Queens, NY



Allegheny Riverfront Park, Pittsburgh, PA



Marina Bay, Singapore



Songdo International Business District, Incheon, South Korea



Little Island, New York, NY

Local Experience



CHEERS Masterplan



Cedar Point Causeway Wetlands, Sandusky Bay Initiative, City of Sandusky, OH



Two Consecutive GES/Coastal Engineering Contracts, Cleveland Metroparks



Port of Cleveland Mobility Study



Lake Erie Dredging and Dredge Permitting



USACE Dredge Material Management, Dike 12

Project Partners — **Port of Cleveland, Cleveland Metroparks, Black Environmental Leaders, City of Cleveland, ODOT, ODNR**

Project Stakeholders

PM Team — **Arup
KS Associates & WRT**

Design Team

- ASC Group** — Environmental, Cultural, and Historical Consulting
- Arup** — Civil, Electrical, Lighting, Sustainability, Transportation, Resiliency, Bridge, Cost Estimating, Financing Strategy
- Davey** — Ecology and Habitat Designs
- KS Associates** — Coastal Engineering, Surveying and Submerged Lands Lease
- TTL Associates** — Geotechnical
- WRT** — Landscape Architecture, Community Engagement

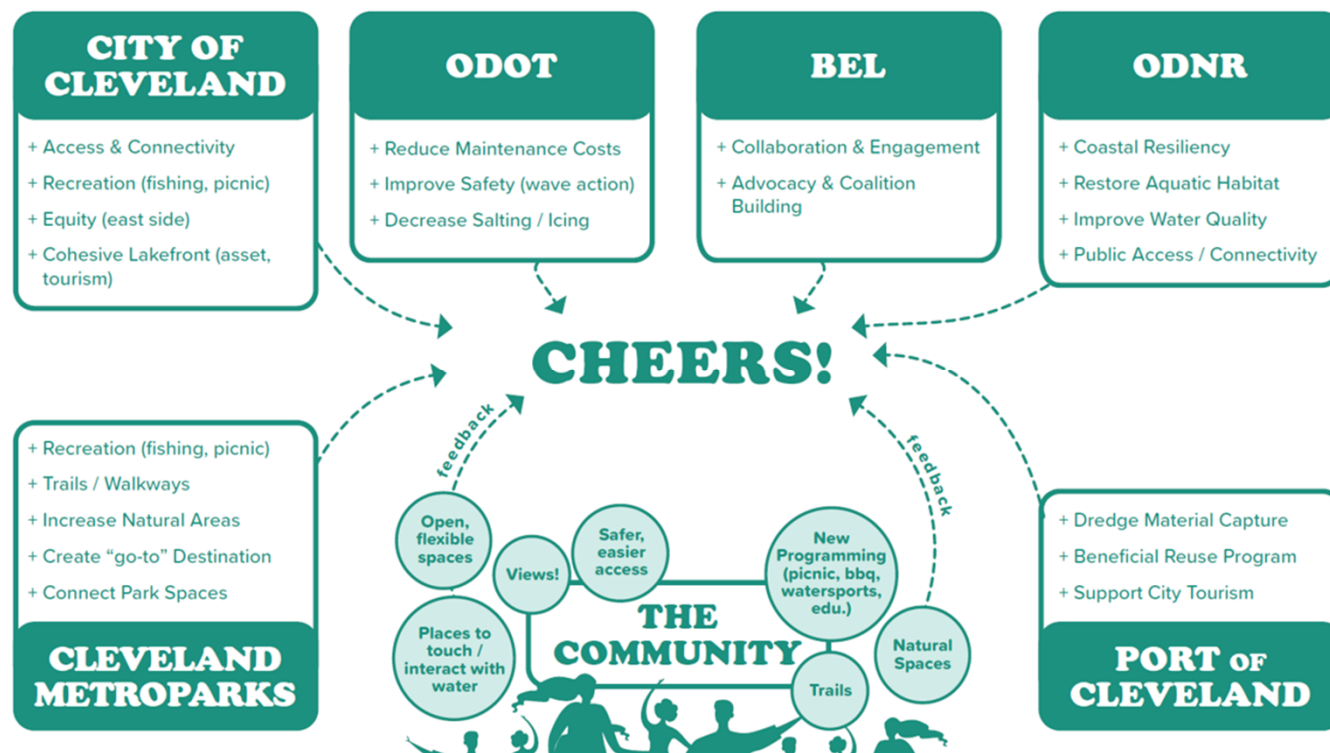
Ariel International	Dominion Energy	NEORS
Bike Cleveland	Downtown Cleveland Alliance	NOACA
Bluestone Heights		Phastar
Campus District	East Clark Elementary Bird Nerds	St. Clair Superior Development Corporation
CEI	Famicos	Slovenian National Home
City of Cleveland – Wards 7 and 9	Forest City Yacht Club	St. Martin de Porres High School
Cleveland Cultural Gardens	Friends of Kirtland Park	The Foundry
Cleveland Museum of Natural History	Glenville	Trust for Public Land
Cleveland Neighborhood Progress	Greater Cleveland Partnership	UCI
Cleveland State University – MUPD	Greater Cleveland Regional Transit Authority (GCRTA)	Upcycle Parts Shop
Greater Collinwood CDC	Green Ribbon Coalition	USACE
Cuyahoga Soil and Water Conservation District	Holden Parks Trust	Village of Bratenahl
	Ingenuity	West Creek Conservancy
Cuyahoga County - Dept of Planning, Public Works, and Public Safety	InterCity Yacht Club	Western Cuyahoga Audubon Society
	Kirtland Bird Club	Western Reserve Land Conservancy
	Kirtlandia Society	
Cuyahoga County Council	Lake Erie Coastal Ohio Trail Scenic Byway	
Cuyahoga Land Bank	Lakeside Yacht Club	
Cuyahoga River AOC	LAND Studio	
Doan Brook Watershed Partners	MidTown CDC	
Destination Cleveland	ODNR Division of Wildlife	

Project Goals and Scope

CHEERS objectives

Vision Management

- Habitat creation and restoration
- Beneficial use of dredge material
- Improving community resilience
- Improving park access
- Equitable investment and redevelopment



Requesting Audience Input!

Which of these 5 objectives means most to you and your organizations?

CHEERS objectives

Vision Management

- Habitat creation and restoration
- Beneficial use of dredge material
- Improving coastal resilience
- Improving port operations
- Equitable inland redevelopment

<https://www.menti.com/aljo8iapaf2a>



CITY OF CLEVELAND

ODOT

BEL

ODNR

- + Coastal Resiliency
- + Restore Aquatic Habitat
- + Improve Water Quality
- + Public Access / Connectivity

- + Dredge Material Capture
- + Beneficial Reuse Program
- + Support City Tourism

PORT OF CLEVELAND

Requesting Audience Input!

Which of these 5 objectives means most to you and your organizations?

WEDG (Waterfront Edge Design Guidelines)

- WEDG is a Rating System and Guidelines that recognizes developers and landowners for resilient, ecological, and accessible design at the water's edge.
- A project can achieve “WEDG Verification” through achievements in the following categories:
 - Site Assessment and Planning
 - Responsible Siting and Coastal Risk Reduction
 - Community Access & Connections
 - Edge Resilience
 - Natural Resources
 - Innovation

WEDG Reshapes our Waterfronts



Overall Scope

1

Enabling Studies and Investigations

Advance and augment previous design work. Key tasks include:

1. Due diligence
2. Field investigations
3. Environmental Resource Inventory
4. Surveys and Existing Conditions Plans

2

Phasing and Implementation Planning

Create an implementation plan that considers:

- Construction feasibility
- Phasing options
- Implementation timelines
- Permitting schedules

3

Funding Strategy

Work with project partners and stakeholders to develop a funding and finance strategy.

4

Stakeholder Engagement

Plan, facilitate, and support the implementation of engagement and outreach activities

5

Masterplan Refinement

6.1

100% Schematic Design, Landside (All Phases)

6.2

Permitting (Coastal and Waterway)

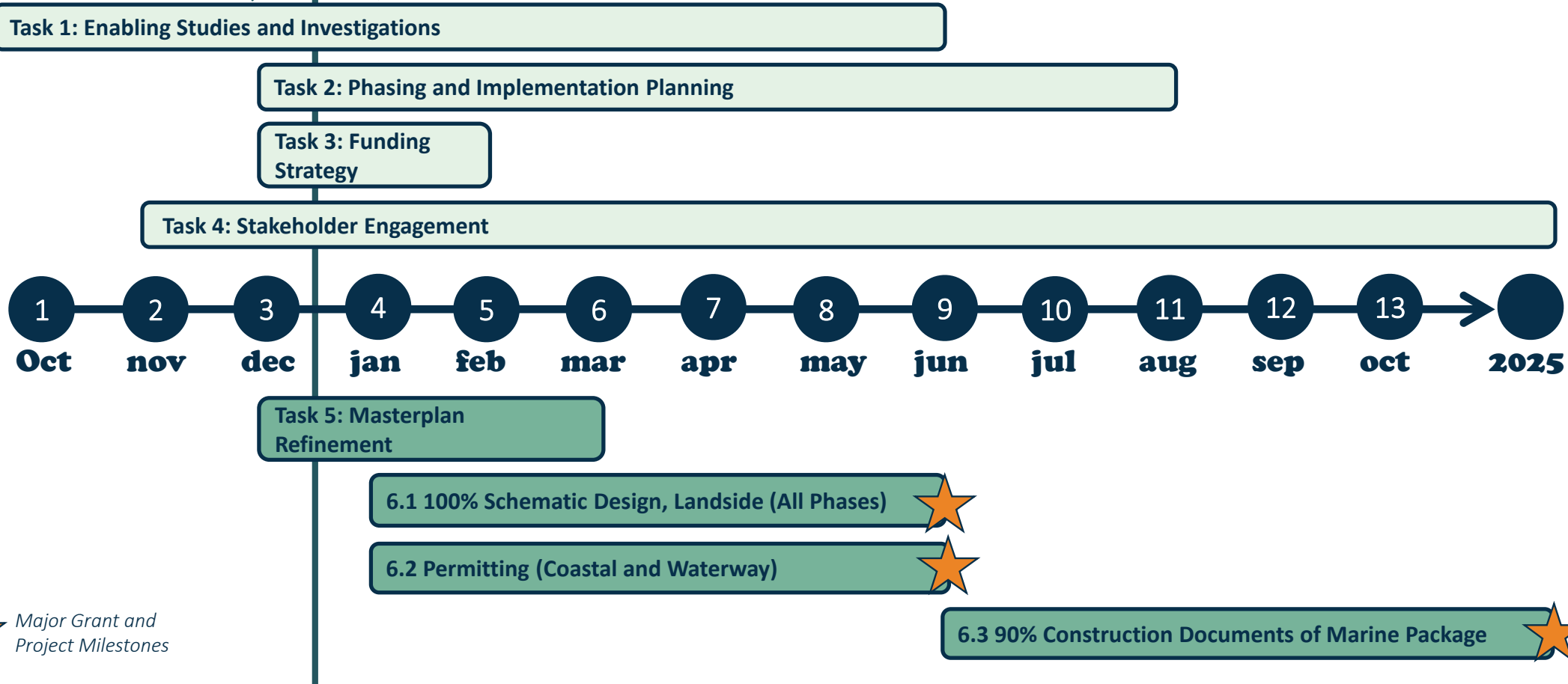
6.3

90% Construction Documents of Marine Package

Design Scope

Project Schedule

we're here!



 Major Grant and Project Milestones

Current and Ongoing Work

Where are we now?

Marine

Coastal Inspections



Inspections of coastal infrastructure that will be incorporated or affected by the CHEERS project.

Geotechnical Borings



Investigation of subsurface soils for the design of shore protection and dredge containment structures.

Hydro Survey

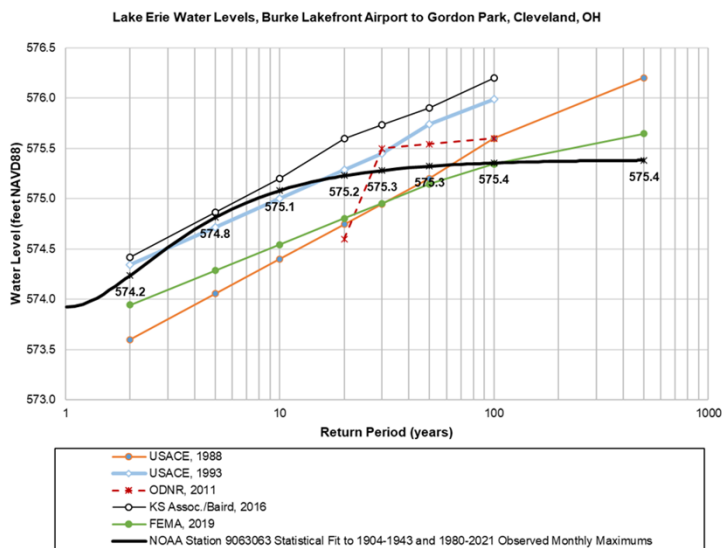


Mapping of the lakebed and existing shore structures.

Where are we now?

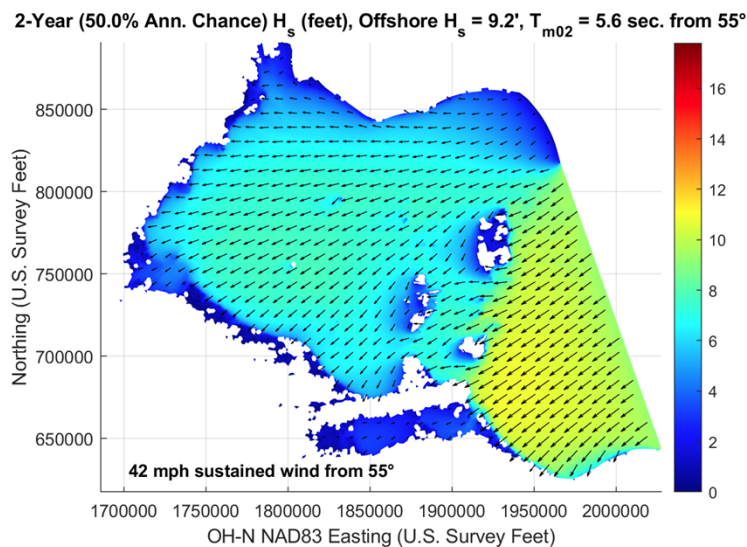
Marine

Metocean Study



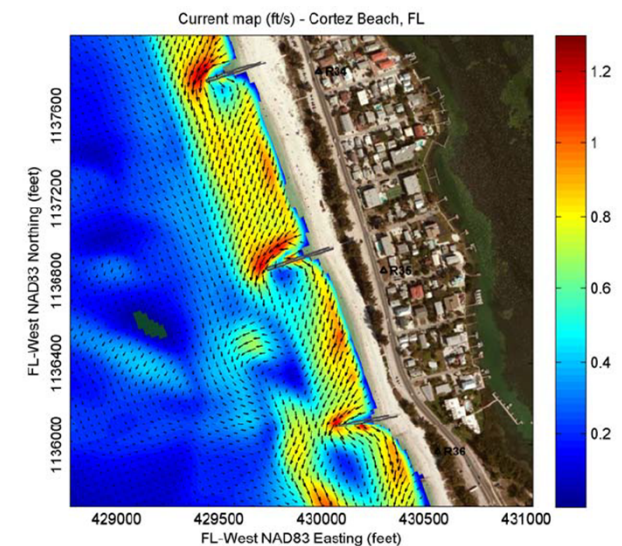
Analysis of the meteorological and oceanographic conditions (water levels, wind and waves).

Wave Model



Nearshore wave transformation modeling to calculate wave conditions to be used for the design of new structures.

Water Circulation Model

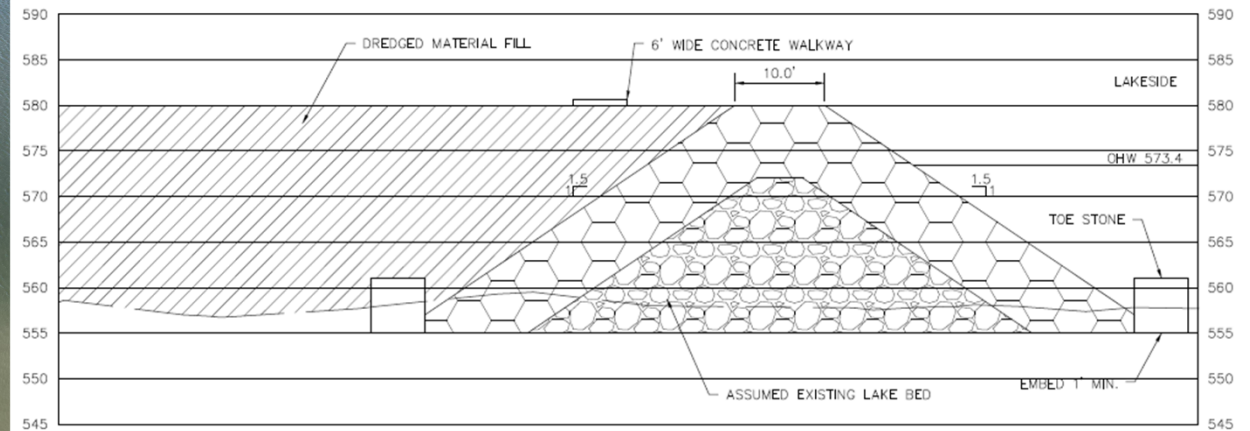
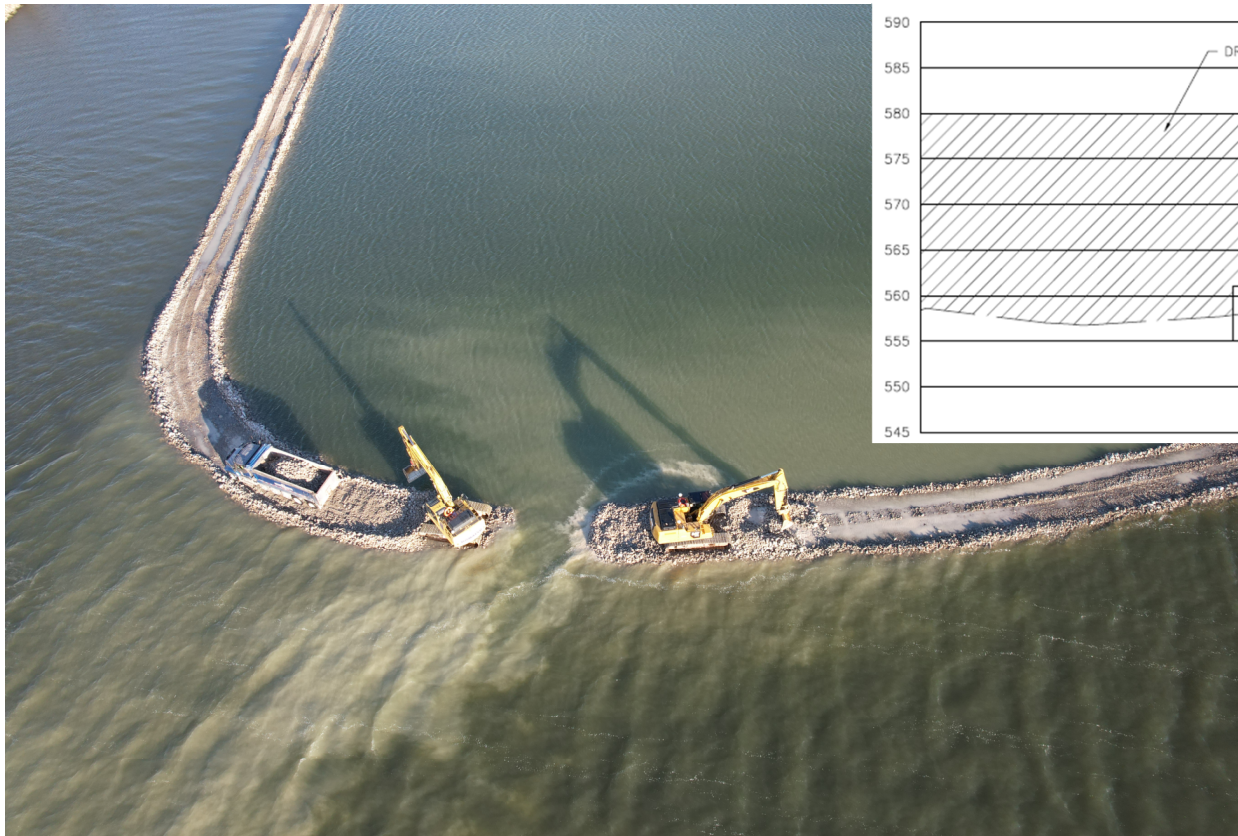


Water circulation modeling to study impacts of new structures and flushing around the Isle and Cove.

Where are we going?

Marine

Marine Design: Perimeter Breakwater Design



The project will require construction of a breakwater around the perimeter of the Isle and dredge placement areas. The perimeter breakwater will provide protection from wave energy and prevent resuspension of dredge material into the harbor.

Where are we going?

Marine Design: Dredge Placement Planning



Once the perimeter breakwater is constructed, dredge material can be placed.

Where are we going?

Marine Design: Dredge Placement Planning



The landmasses for the Isle, park, and habitat improvements will be developed through deposition of dredge material, similar to the Cleveland Lakefront Nature Preserve.

Where are we now?

Ecology



ARUP

Existing Ecology and Habitat



Walkways provide lake access and fishing opportunities



Existing habitats includes lawn and picnic areas

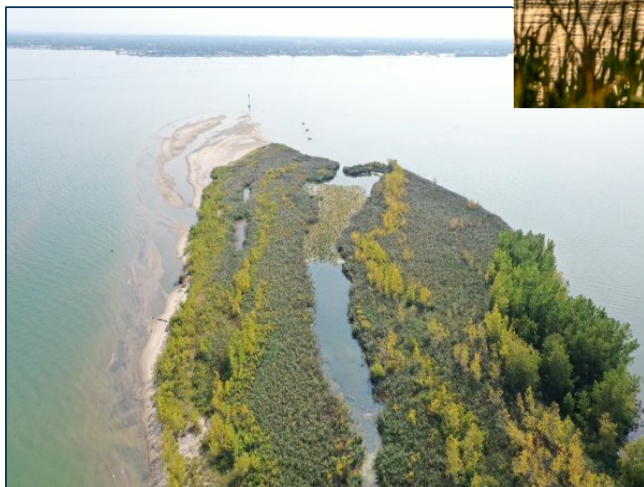


Two (2) small wetlands were identified within the project area

Where are we going?

Ecology

Creating and Restoring Historic Lakefront Habitat



Bay Point, Ottawa County

Mentor Marsh, Lake County
<https://www.dvidshub.net/image/6388520/mentor-marsh-state-nature-preserve>



Walnut Beach, Ashtabula County

Where are we going?

Ecology & Marine

Adaptive Management Plan



Engagement



THE COVE

THE LAWN

THE BOARDWALK

THE SHORE

CULTURAL TRAIL

THE ISLAND

GREENWAYS

HABITAT TRAIL



Community Engagement

Building on the Masterplan Engagement Process

Previous Engagements

Masterplan Engagement Process (2020-2021)

OUTREACH MATERIALS + METHODS

Paper & Traditional Media



▲ Posters distributed in multiple languages (english, Spanish, Mandarin)

▲ Coloring postcards distributed through community partners with links to further engagement

IN-PERSON ENGAGEMENT

Walkshops

- + 4 tour routes & 3 time slots
- + 87 registrations
- + 12+ volunteers
- + followed COVID-19 protocols



IN-PERSON ENGAGEMENT

Intercept Surveys



▲ Planning team walked along the lakefront to survey and talk to existing park users who may not use digital tools

OUTREACH MATERIALS + METHODS

Social Media & Web



▲ Instagram slider "story" with information about the project and how to get involved

▲ Facebook & Website invites/information

IN-PERSON ENGAGEMENT

Self-Guided Scavenger Hunt



▲ Participants were asked to visit and answer questions about 8 sites

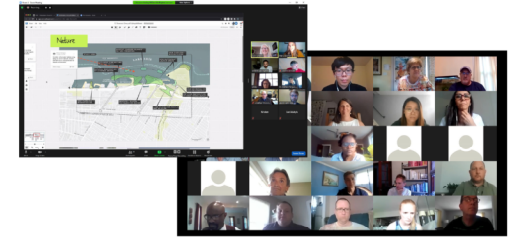


▲ Each site required participants to answer questions or do an activity. Participants were entered to win one of 15 Dave's gift cards (local grocery store).

<https://survey123.arcgis.com/share/14b66e466cc241e8859416f0af03d439?>

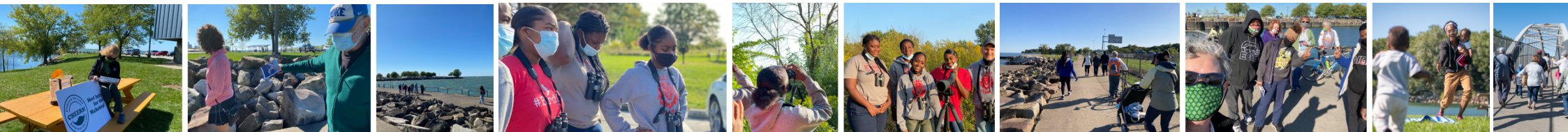
DIGITAL ENGAGEMENT

Community Meetings



+ 65-130 participants per meeting
+ feedback integrated into other digital tool results (survey, etc.)

▲ Community Meetings were held over Zoom with interactive features like polling and facilitated breakout groups where participants were invited to comment and draw on digital whiteboards



What we asked?

During the Masterplan Engagement Process

Which projects do community members feel would be the most impactful to the future of the lakefront?

How community members use current spaces?

What goals / principles are most important?

What areas to focus attention and investment?

What is Working

...

...

and what isn't working on the existing lakefront?

What we heard?

That influenced the Masterplan

"Enhance the culture"

"Explore the potential of green spaces"

"Maintain and enhance natural habitats"

"Educational programming"

"Create better amenities"

"Enhance educational opportunities"

"Balance between residential + commercial development"

<< Create better accesses and mobility >>

"Enhance the safety"

"Enhance the nature"

"Create more activities"

"Explore the potential of a *'beautiful'* waterfront!"



April 2021 Plan Reveal



Connect

Create more opportunities to touch and engage with the water



Protect

Use dredge material to create more park space and habitat areas to buffer critical infrastructure



Program

Provide a diversity of water-based recreation opportunities (fishing, wading, watersports, etc.)



Protect

Enhance & create new wetland areas and coves that protect infrastructure & provide new habitat space



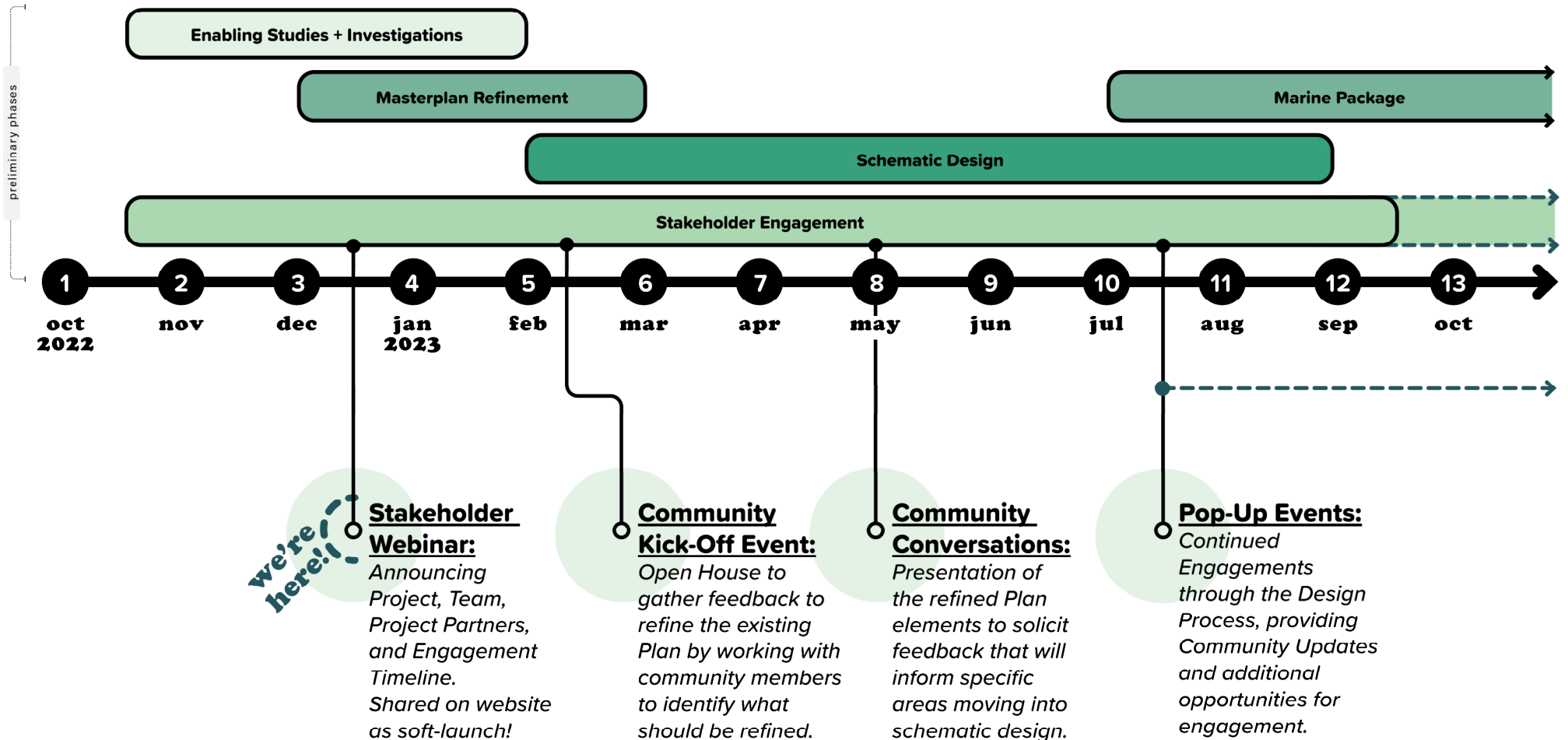
Connect

Create new greenway connections from the lakefront to the adjacent communities



2023 Masterplan Refinement + Updated Engagement Plan

Engagement Plan



Community Kick-Off

- 1st week of February, 2023
 - Dates: February 2-4
- Series of Open Houses focused on:
 - Masterplan Overview/What is CHEERS?
 - The Path and Process Forward + Priorities
 - Masterplan Refinement (Visioning)
- Please help us to spread the word!
 - More information and specific details about the Kick-Off are forthcoming, but to kick things off:



CHEERS is underway!

Check back here for updates and to get involved in early 2023:
ClevelandMetroparks.com/CHEERS
 or call 440-331-8593

Embrace the Lake
CHEERS!
 Embrace the Lake

Cleveland Harbor Eastern Embayment Resilience Strategy

This study is made possible by a grant from the National Fish and Wildlife Foundation (NFWF).

Logos: US Flag, Cleveland Metropolitan Government, Port of Cleveland, Black Environmental Leaders.

We invite you to start thinking about + share (in preparation for our 2023 engagement):

Since the completion of the masterplan, have your priorities (as a stakeholder) changed/evolved? If so, how?

Community Kick-Off

- 1st week of February, 2023
 - Dates: Feb 6-10, 2023
- Series of Community Engagement Sessions
 - Masterplan Kick-Off
 - The Path Forward
 - Masterplan Review
- Please help us get started by sharing your thoughts on the masterplan
 - More info about the masterplan and how to kick the process off

<https://www.menti.com/aldzmbb9ew7h>

CHEERS
is underway!



We invite you to start thinking about + share (in preparation for our 2023 engagement):

Since the completion of the masterplan, have your priorities (as a stakeholder) changed/evolved? If so, how?

Next Steps

Next Steps

- Enabling efforts
- June 2023 submission of marine permit package and landside design
- Regulatory coordination meetings
- Ongoing Stakeholder & Community Engagement

Project Partner Lead Contacts:



Kelly Coffman

Principal Planner
4101 Fulton Parkway
Cleveland, OH 44144
(216) 635-3299 (Office)
Email: kbc@clevelandmetroparks.com



Linda D. Sternheimer

Director, Urban Planning and Engagement
1100 West 9th Street - Suite 300
Cleveland, OH 44113
Phone: 216-377-1348
Email: Linda.Sternheimer@portofcleveland.com

“I hope this is a shining star, or a north star, for many other large civic projects that can get done.”

- Lillian Kuri, *Cleveland Planning Commission*

