

TRAILS AND GREENWAYS

TRAIL MATRIX ~ 2014 UPDATE

October 30, 2014

Cleveland Metroparks Board of Park Commissioners



Trail Matrix – Trail Attributes

TRAIL ATTRIBUTES

Type of Trail/Potential Popularity (choose all relevant)

Regional/Statewide
Park District/Countywide
Local

Community Benefit (choose all relevant)

Filling "gap" in CM Trails or Regional Trails
Links to CM
Connect CM to urban core
Opportunity to reach under-served areas
Link CM to Adjacent Park Districts/Trails
High visibility of trail/trailheads/community identity

Uses (choose all relevant)

Potential commuter route
Fills recreational need (mountain bike, water trail, etc.)
Trail off-public roadways
Draw non-recreation users(wildlife viewing/photography)
Connects CM to community recreation/education facilities

Trail Experiences (choose all relevant)

Provides a destination
Scenic/natural/vistas or urban funky experiences
Wayfinding - easy/direct route to follow
Ease of parking and access to trail
Cultural/historic sites
Variety of habitats/sights/views/overlooks

Length of Trail (choose one)

>3 miles
1 to 3 miles
< 1 mile

Population Within One Mile of Trail (choose one)

>25,000 (or considered a regional/statewide trail)
10,000 - 25,000
< 10,000

Community Support/Partnerships (choose all relevant)

Regional and/or Statewide Support
County/Park District Support
Local Support and meshes with community goals/plans
Partnerships agreed to cost share studies/construction
Known major opposition

Planning (choose one)

Planning & design complete & meshes w/CM vision/design
Planning complete & meshes with CM vision
Planning in process
No planning or does not mesh w/CM vision & design

Ease of Implementation (choose one)

Relatively easy implementation (CM property/crews)
Some difficulties, but nothing significant
Plan not implementable as conceived/some redesign
Difficult implementation (ex: railroads/adverse owners)

Known Challenges (choose all relevant)

No/minimal challenges
Significant site issues (slopes, soils, terrain, drainage)
Perceived safety concerns/isolation
Traffic congestion/several street crossings
Ownership not secured
Environmental (brownfields; contaminated)
Not compatible with natural resources (sensitive areas)

Costs - Acquisition (choose one)

No acquisition needed (CM lands/completed/No CM\$)
Minimal acquisition/probable donations
Estimated acquisition cost to CM < \$75,000
Estimated acquisitions to CM > \$75,000

Costs - Construction (choose one)

Fully funded (grants/govt agencies/etc)
Significant funding in place relative to project size
Majority of work by CM staff/crews
Potential for significant grant funding relative to project
Trail built; requesting maintenance/sustainability
Estimated construction costs to CM < \$250,00
Estimated construction costs to CM > \$250,000

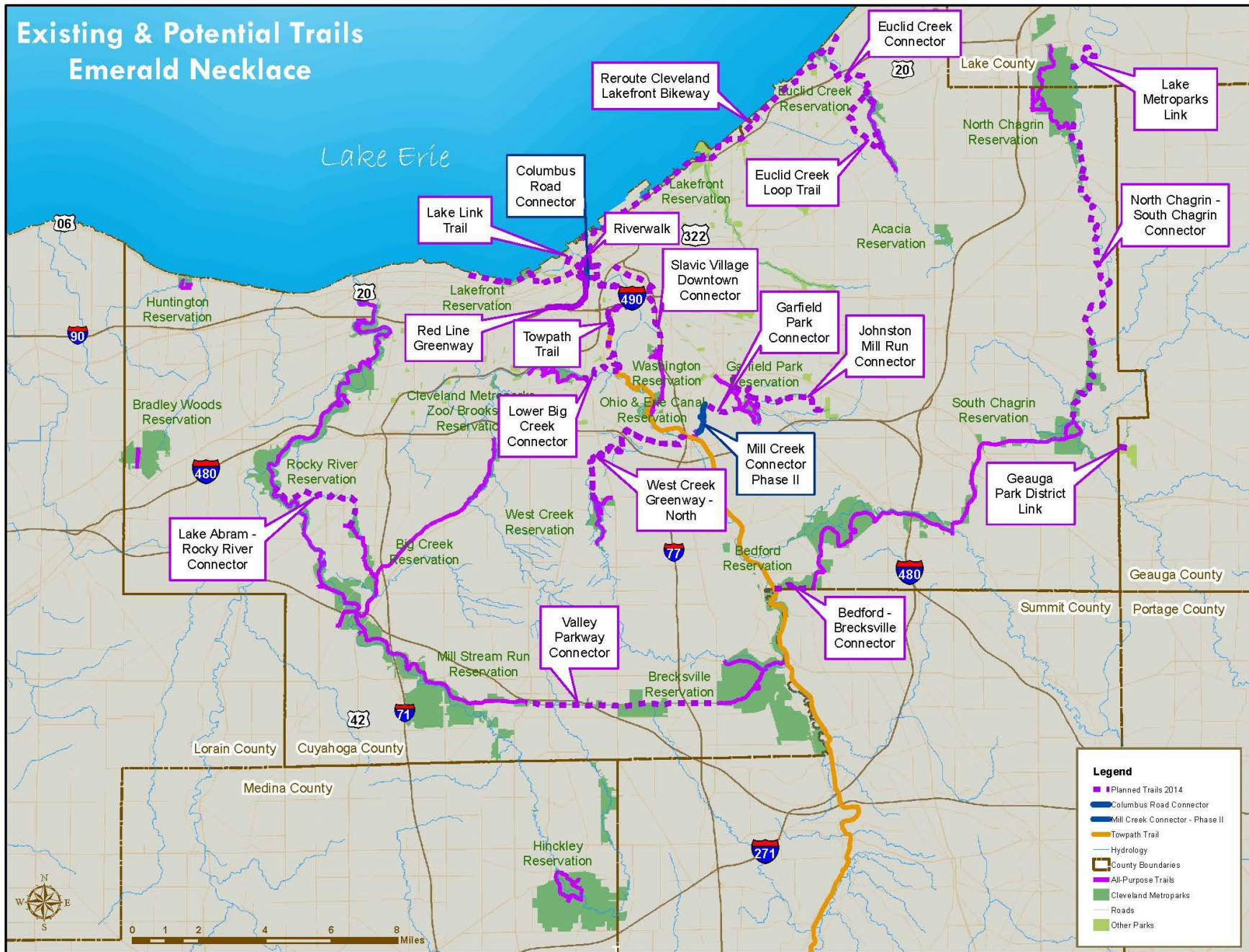
Trail Infrastructure/Sustainability (choose one)

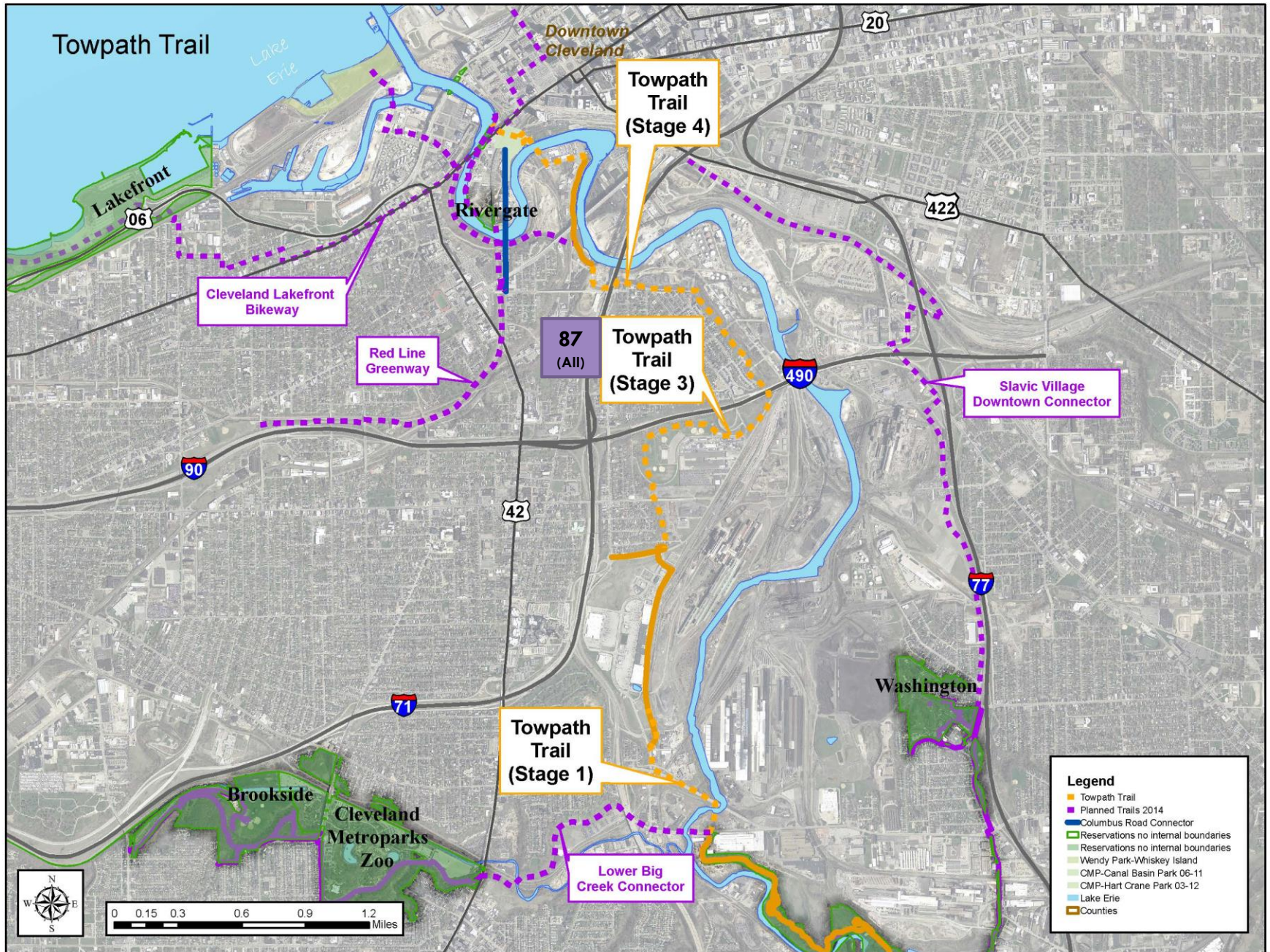
Minimal trail sustainability issues
1-2 significant bridges/tunnels/boardwalk/retaining wall
> 3 significant bridges/tunnels/boardwalk/retaining wall

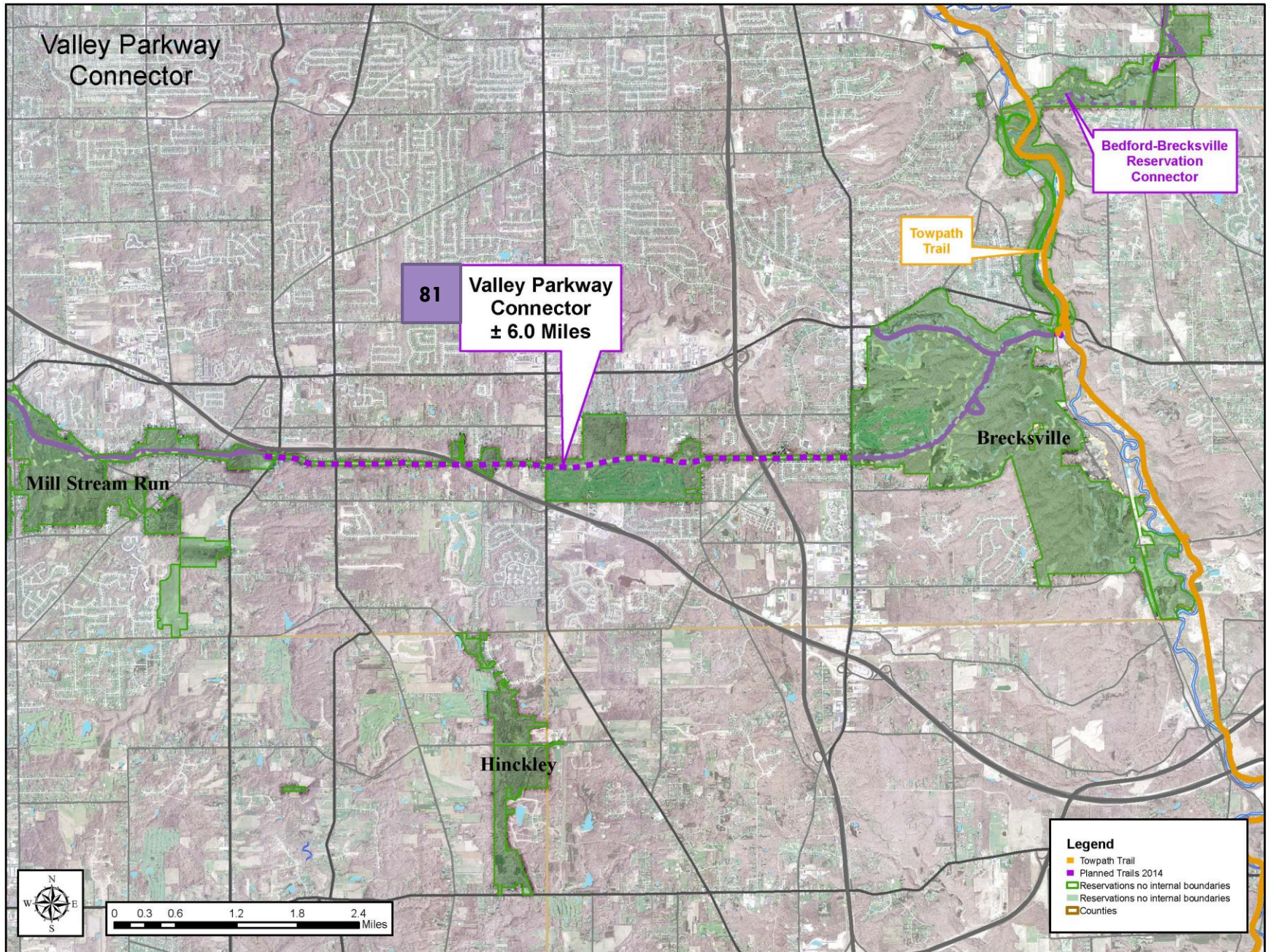
Maintenance/Operational Costs (choose one)

Partnering agency willing to maintain
Maintenance similar to existing CM trails
Maintenance similar, but distant from CM facilities
High due to site conditions (erosion/flooding/vandalism)

Existing & Potential Trails Emerald Necklace







Lake Link Trail

Lake Erie

Downtown Cleveland

Cuyahoga River

78 Lake Link Trail ± 1.7 Miles

Cleveland Lakefront Bikeway

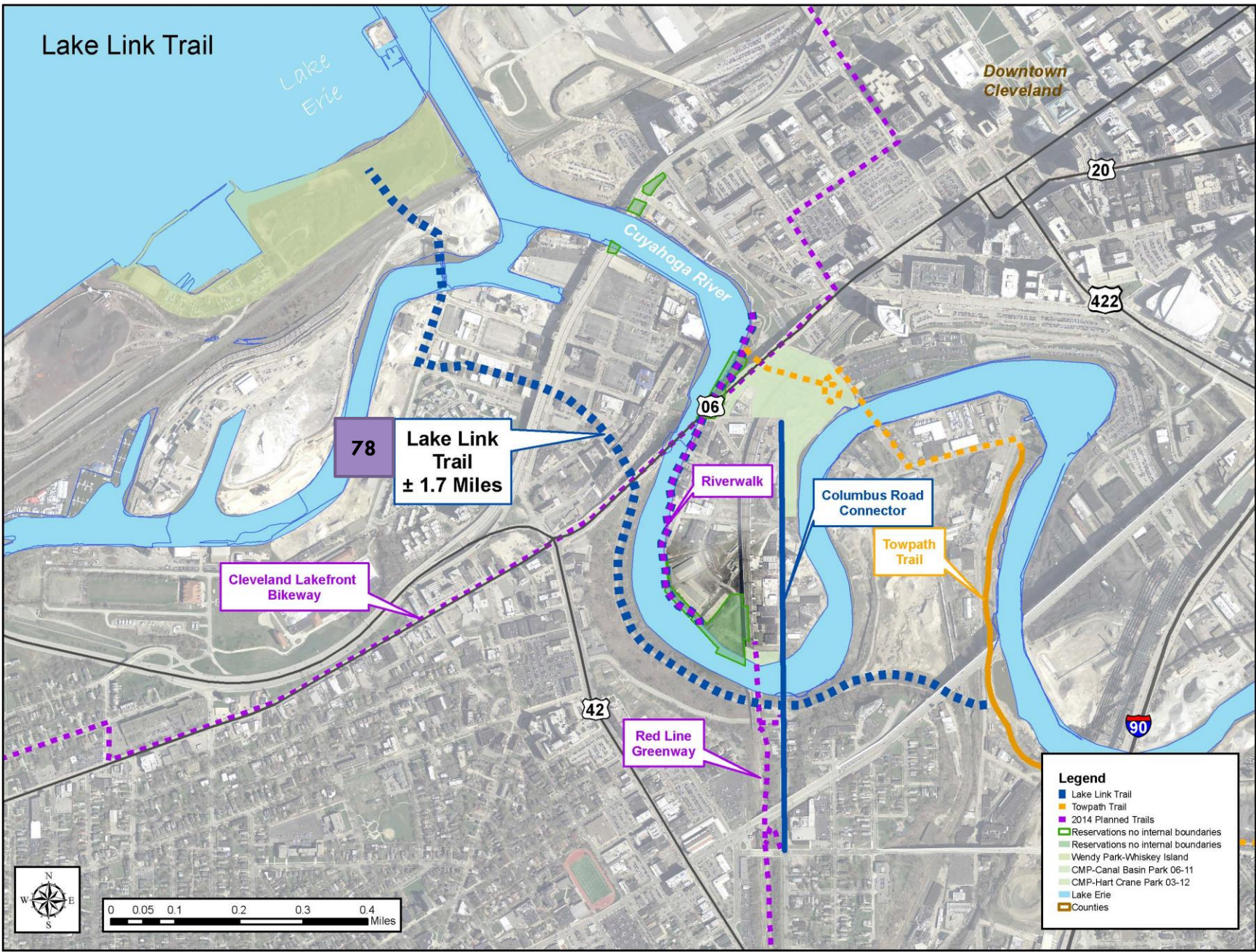
Riverwalk

Columbus Road Connector

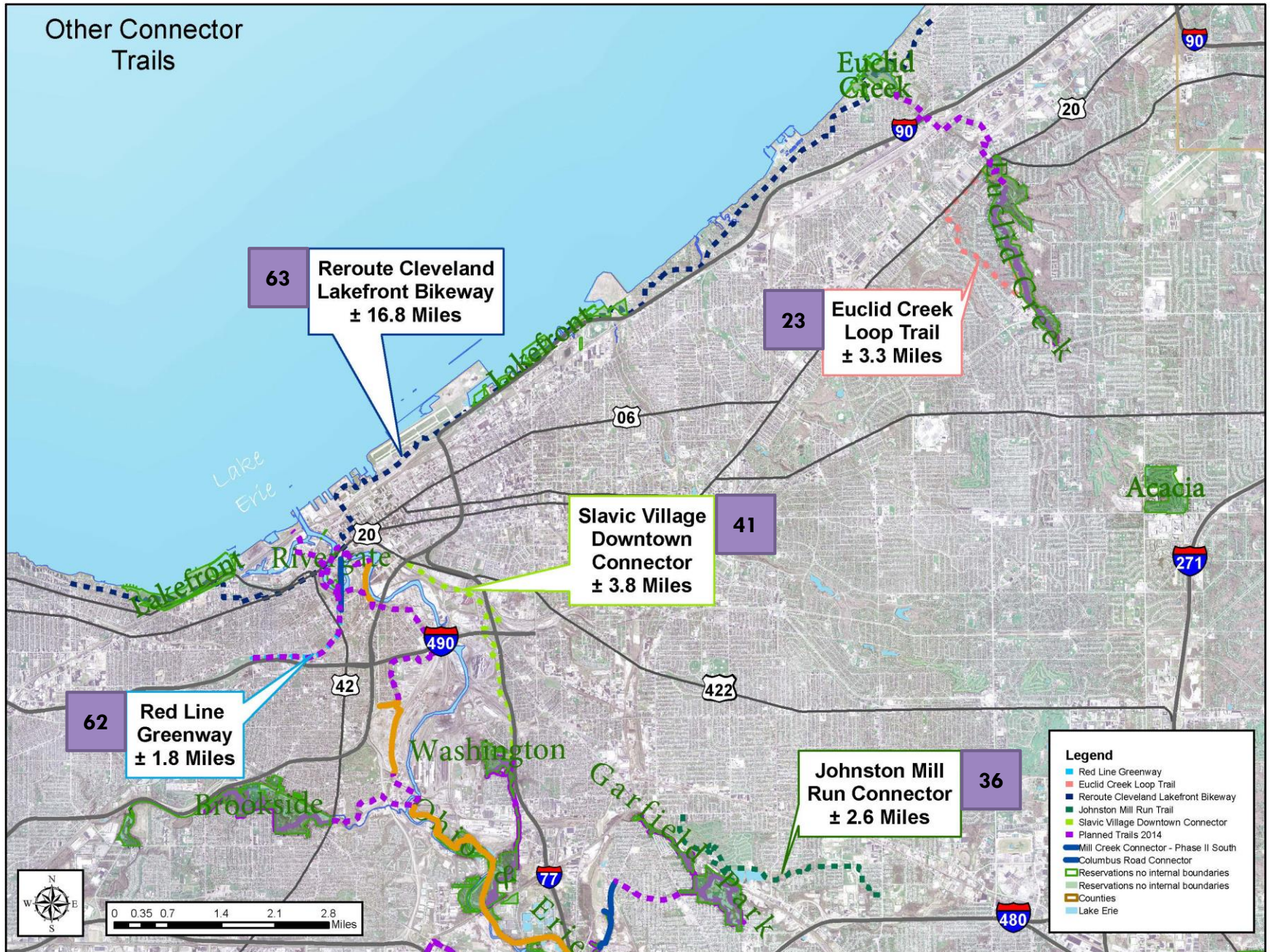
Towpath Trail

Red Line Greenway

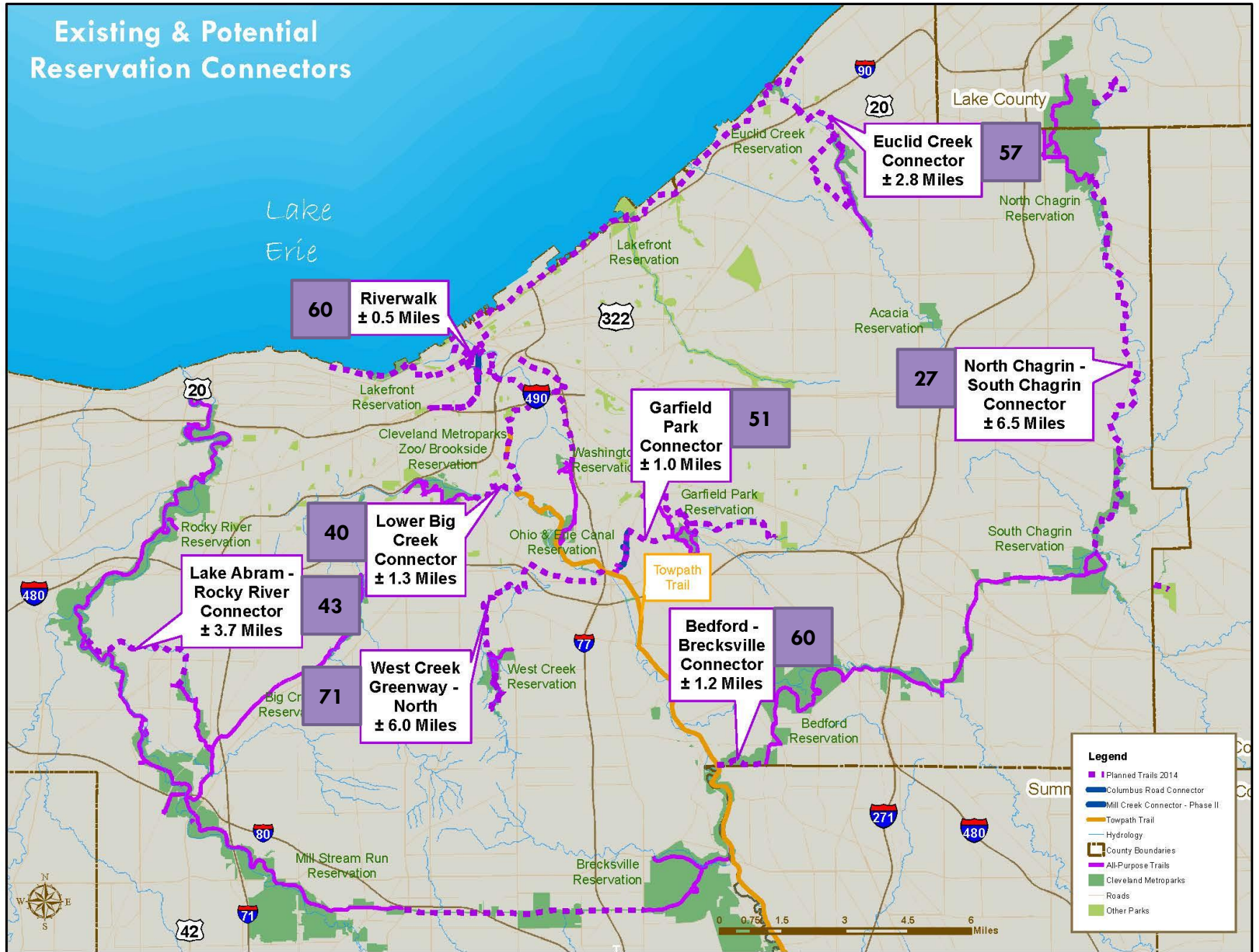
- Legend**
- Lake Link Trail
 - Towpath Trail
 - 2014 Planned Trails
 - Reservations no internal boundaries
 - Reservations no internal boundaries
 - Wendy Park-Whiskey Island
 - CMP-Canal Basin Park 06-11
 - CMP-Hart Crane Park 03-12
 - Lake Erie
 - Counties



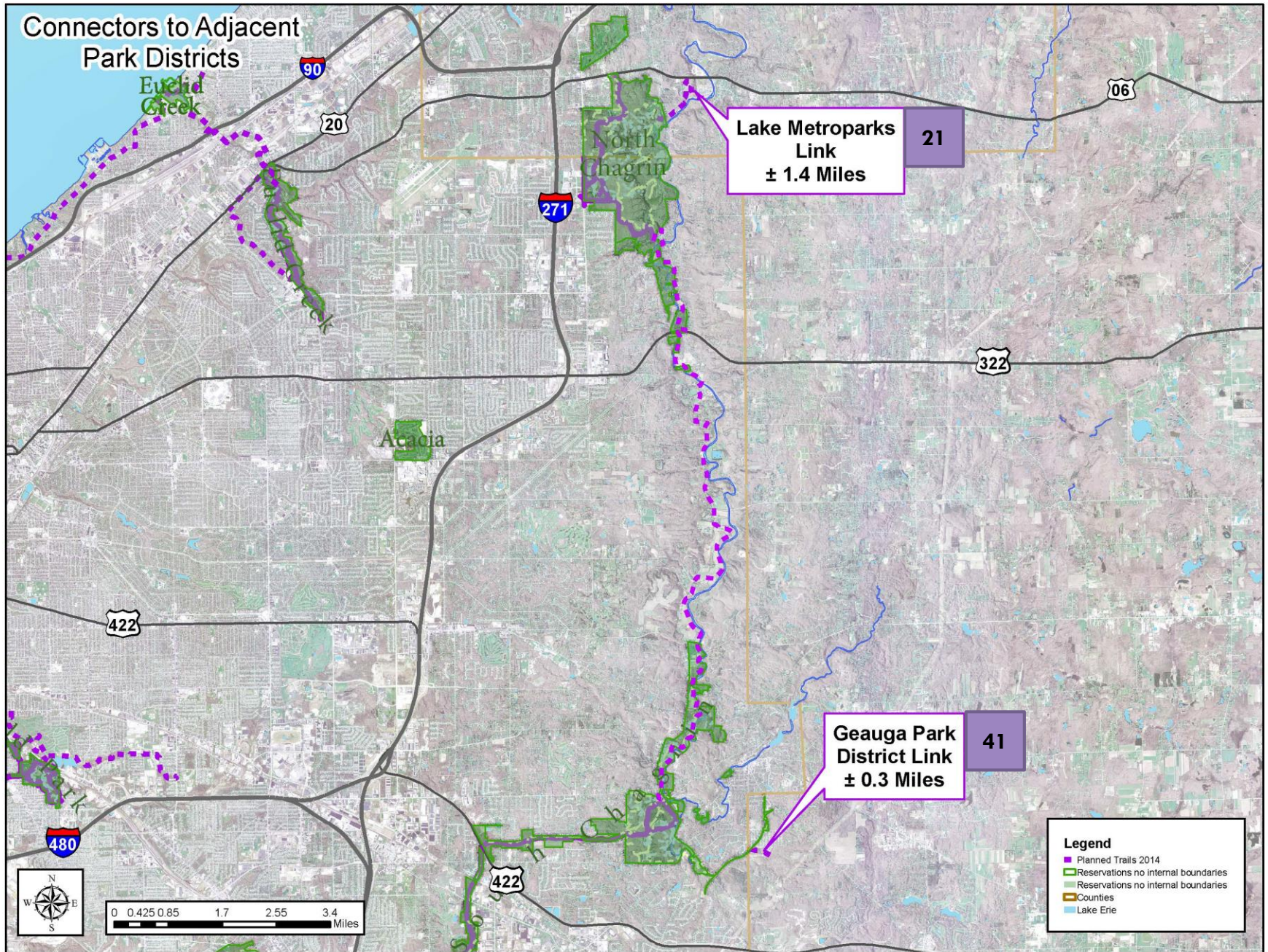
Other Connector Trails



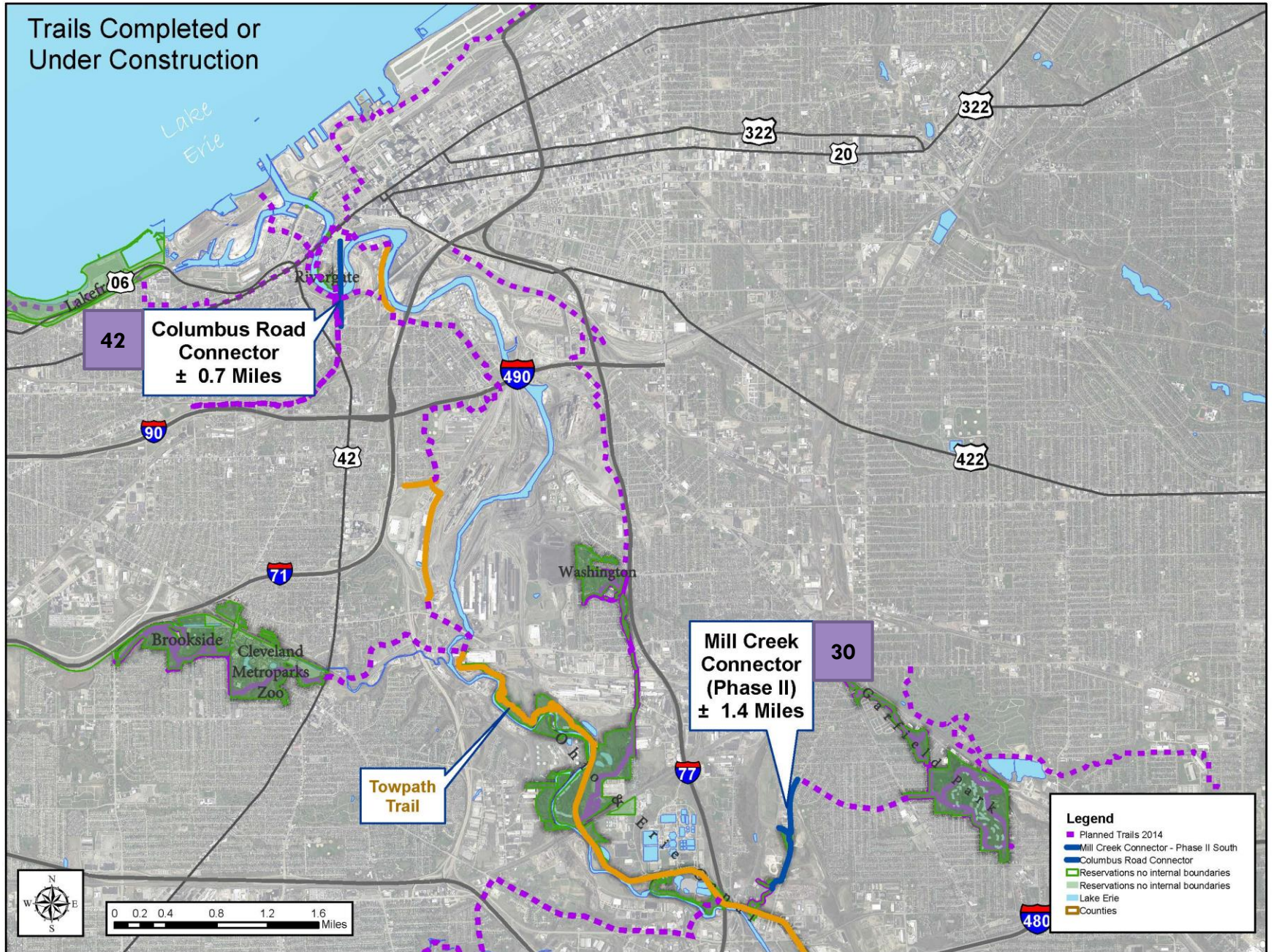
Existing & Potential Reservation Connectors



Connectors to Adjacent Park Districts



Trails Completed or Under Construction



Trail Matrix – Summary

<u>'14</u>	<u>'13</u>	<u>Projects:</u>
87	85	Towpath Trail
81	79	Valley Parkway Connector (Brecksville – North Royalton)
78	71	Lake Link Trail
71	71	West Creek Greenway Trail – North
63	55	Reroute Cleveland Lakefront Bikeway
62	37	Red Line Greenway (Viaduct to Zone Recreation)
60	62	Riverwalk
60	60	Bedford – Brecksville Reservation Connector
57	52	Euclid Creek Connector (Euclid Creek Reservation to Lakefront)
51	51	Garfield Park Connector (Garfield Blvd to Garfield Park Reservation)
43	41	Lake Abram – Rocky River Connector
41	43	Geauga Park District Link
41	34	Slavic Village Downtown Connector (Washington Reservation to E. 9 th Steet; West of I-77)
40	39	Lower Big Creek Connector (Zoo to Harvard Rd/Towpath)
36	35	Johnston Run Connector (Garfield Park Reservation to Kerruish Park)
27	23	North Chagrin - South Chagrin Connector
23	28	Euclid Creek Loop
21	21	Lake Metroparks Link
		<u>Complete/Under Construction:</u>
42	49	Columbus Road Connector
30	35	Mill Creek Connector (Phase II)



Division of Strategic Initiatives
Chief Executive Officer Department

Donna L. Studniarz, Chief of Strategic Initiatives
Sara Byrnes Maier, Senior Strategic Park Planner