



Cleveland Metroparks®

# FIND YOUR PATH

## Natural Resources Update: A Decade of Rare Species Discoveries in Cleveland Metroparks

John Reinier  
November 17, 2022

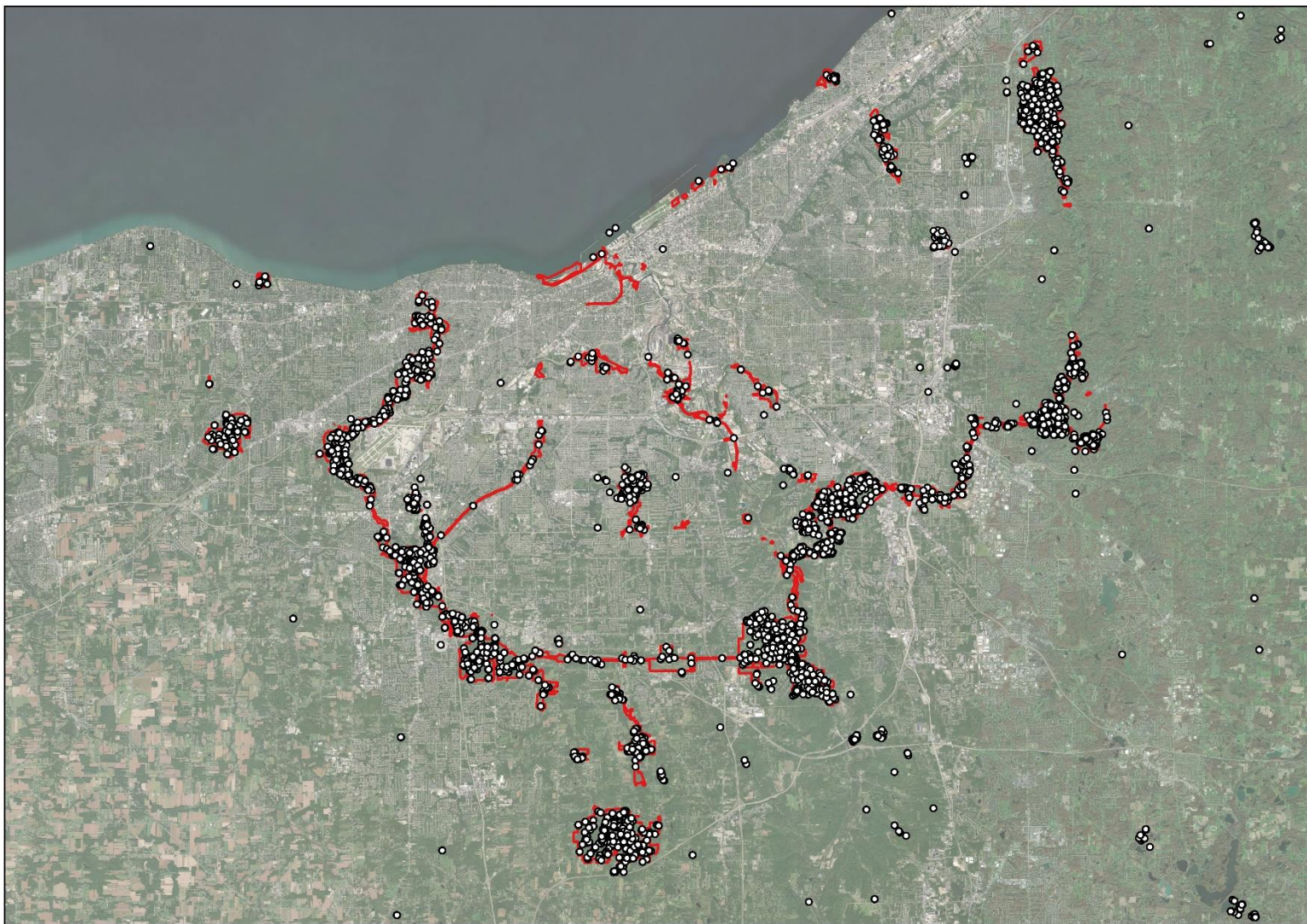


# Natural Features Inventory

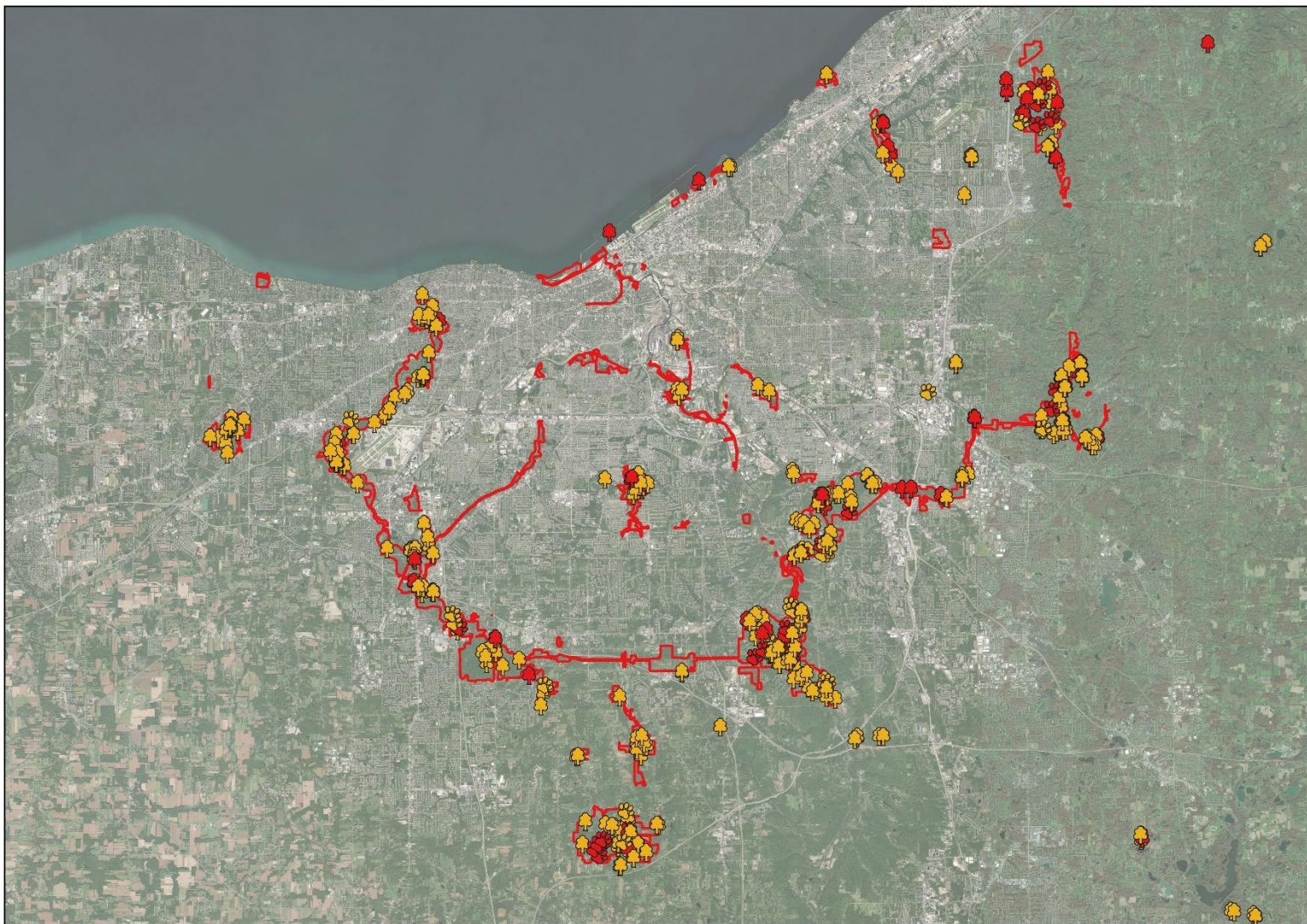
## Purpose

- Document and characterize species, communities, and physical habitat features (e.g., geological features) throughout Cleveland Metroparks and adjacent areas.
- Grew out of wetland inventory program and has built on past observations by various naturalists and scientists working the park.
- Focus on known locations of rare/noteworthy features but also includes surveys of areas not previously known to support rare species
  - Many new high-value areas have been discovered
  - 2009 list of state-listed species in Cleveland Metroparks totaled 12 species
    - 5 were thought to be extirpated from the park
  - Current tally is ~55 – 60

# Natural Features Inventory



# Natural Features Inventory



# New Species for Ohio

Lovely shadbush (*Amelanchier amabilis*)



# New Species for Ohio

Rough hawthorn (*Crataegus scabrida* var. *scabrida*)



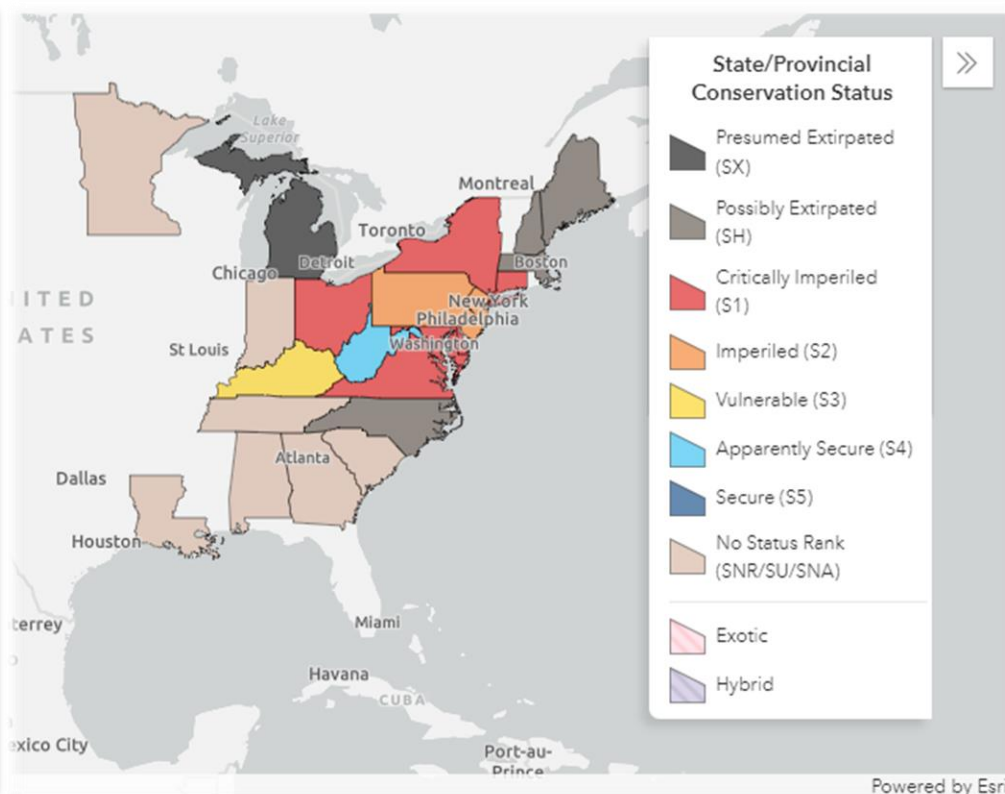
# New Species for Ohio

Smooth blackberry (*Rubus canadensis*)



# Long Lost Species

American spearwort (*Ranunculus ambigens*)





# Endangered/Threatened Species



# Wildlife



# Management/Restoration



# Wrapping up...

- Knowledge about rare plants in Cleveland Metroparks has increased significantly over the past 10+ years.
  - Increased survey effort
  - Increased land acquisition and protection
- Focused management and stewardship has also increased
- Successes have been a direct result of increased effort and attention
  - Delisted species