



Cleveland
Metroparks

COME OUT
AND PLAY



Trail Matrix, Round 3

Board of Park Commissioners Meeting

August 20, 2015



Strategic Plan & Trail Matrix

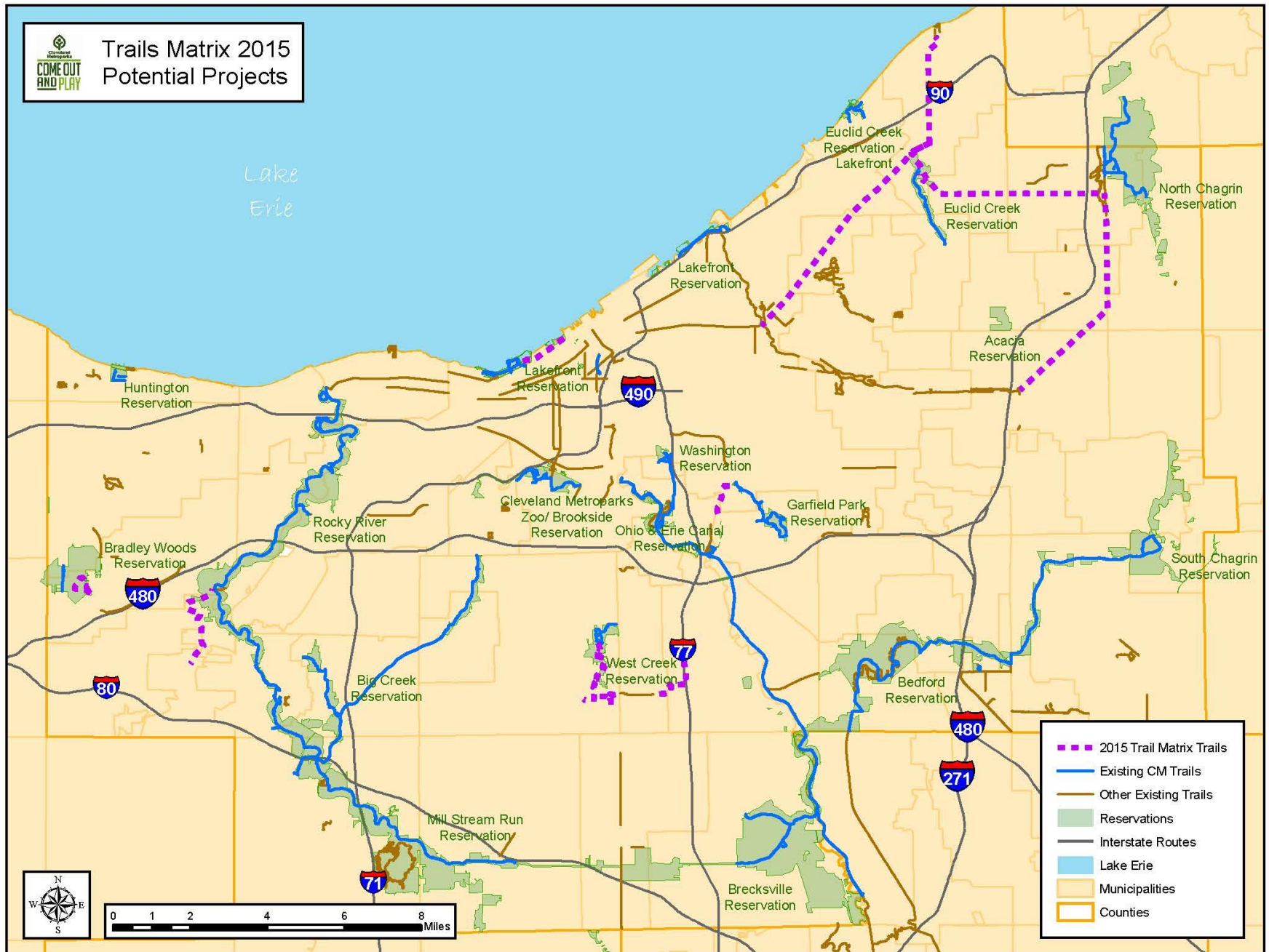
- “Connections” identified as one of five key goals
- Tool to evaluate potential opportunities for Cleveland Metroparks to pursue/support
- 14 attributes such as public benefit, user populations, and trail experiences

Trail Matrix Attributes

Type of Trail/Potential Popularity (choose all relevant)	Population Within One Mile of Trail (choose one)	Costs - Acquisition (choose one)
Regional/Statewide	>25,000 (or considered a regional/statewide trail)	No acquisition needed (CM lands/completed/No CM\$)
Park District/Countywide	10,000 - 25,000	Minimal acquisition/probable donations
Local	< 10,000	Estimated acquisition cost to CM < \$75,000
Community Benefit (choose all relevant)	Community Support/Partnerships (choose all relevant)	Expected ROW, minimal cost
Filling "gap" in CM Trails or Regional Trails	Regional and/or Statewide Support	Estimated acquisitions to CM > \$75,000
Links to CM	County/Park District Support	Costs - Construction (choose one)
Connect CM to urban core	Local Support and meshes with community goals/plans	Fully funded (grants/govt agencies/etc)
Opportunity to reach under-served areas	Partnerships agreed to cost share studies/construction	Significant funding in place relative to project size
Link CM to Adjacent Park Districts/Trails	Known major opposition	Majority of work by CM staff/crews
High visibility of trail/trailheads/community identity	Planning (choose one)	Potential for significant grant funding relative to project
Uses (choose all relevant)	Planning & design complete & meshes w/CM	Trail built; requesting maintenance/sustainability
Potential commuter route	Planning complete & meshes with CM vision	Estimated construction costs to CM < \$250,00
Fills recreational need (mountain bike, water trail, etc.)	Planning in process	Estimated construction costs to CM > \$250,000
Trail off-public roadways	No planning or does not mesh w/CM vision & design	Trail Infrastructure/Sustainability (choose one)
Draw non-recreation users(wildlife)	Ease of Implementation (choose one)	Minimal trail sustainability issues
Connects CM to community	Relatively easy implementation (CM property/crews)	1-2 significant bridges/tunnels/boardwalk/retaining
Trail Experiences (choose all relevant)	Some difficulties, but nothing significant	> 3 significant bridges/tunnels/boardwalk/retaining
Provides a destination	Plan not implementable as conceived/some redesign	Maintenance/Operational Costs (choose one)
Scenic/natural/vistas or urban funky experiences	Difficult implementation (ex: railroads/adverse owners)	Partnering agency willing to maintain
Wayfinding - easy/direct route to follow	Known Challenges (choose all relevant)	Maintenance similar to existing CM trails
Ease of parking and access to trail	No/minimal challenges	Maintenance similar, but distant from CM facilities
Cultural/historic sites	Significant site issues (slopes, soils, terrain, drainage)	Long-term maintenance undecided
Variety of habitats/sights/views/overlooks	Perceived safety concerns/isolation	High due to site conditions (erosion/flooding/vandalism)
Length of Trail (choose one)	Traffic congestion/several street crossings	
>3 miles	Ownership not secured	
1 to 3 miles	Environmental (brownfields; contaminated)	
< 1 mile	Not compatible with natural resources (sensitive areas)	



Trails Matrix 2015 Potential Projects



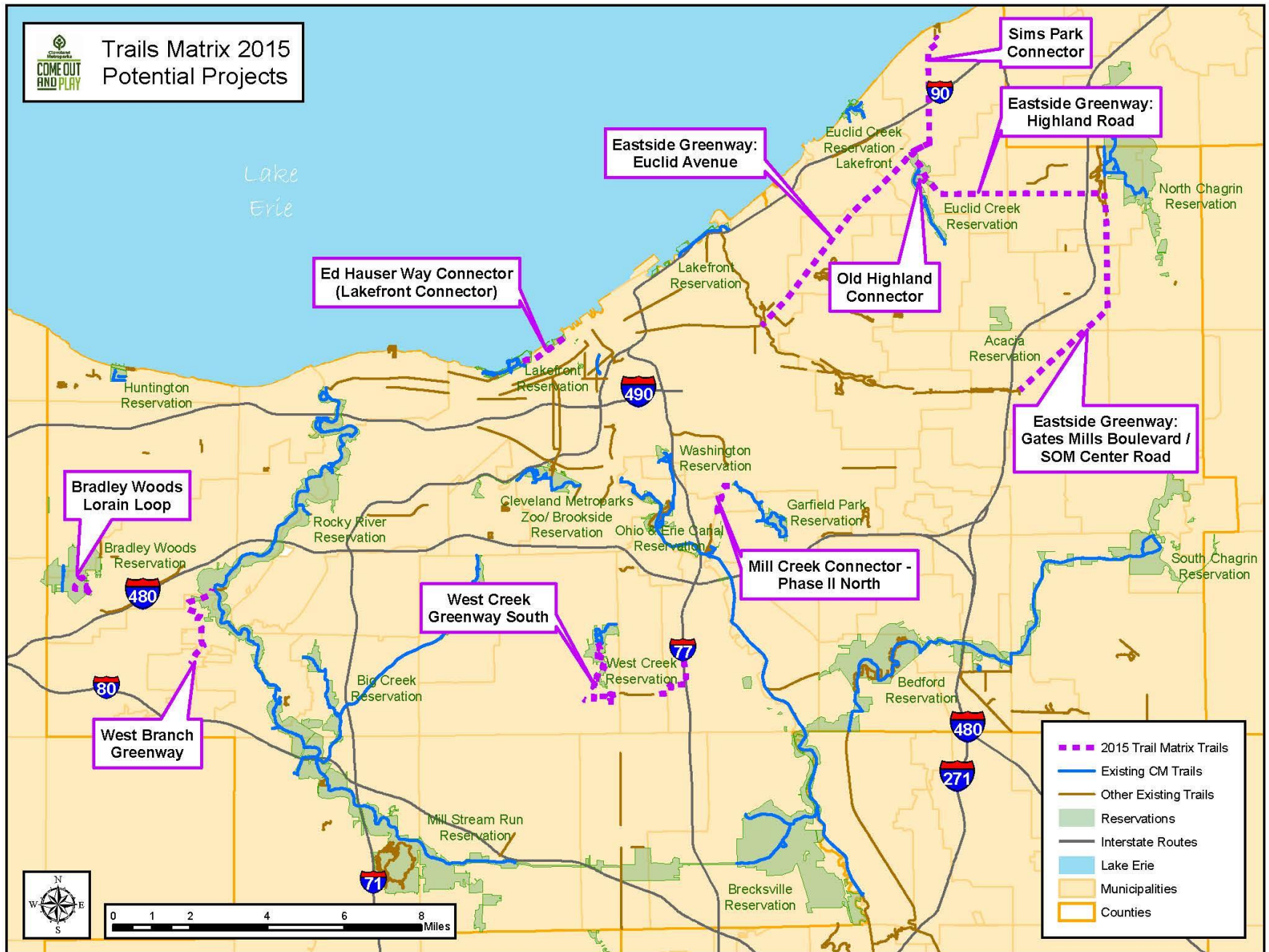
Lake
Erie

- 2015 Trail Matrix Trails
- Existing CM Trails
- Other Existing Trails
- Reservations
- Interstate Routes
- Lake Erie
- Municipalities
- Counties





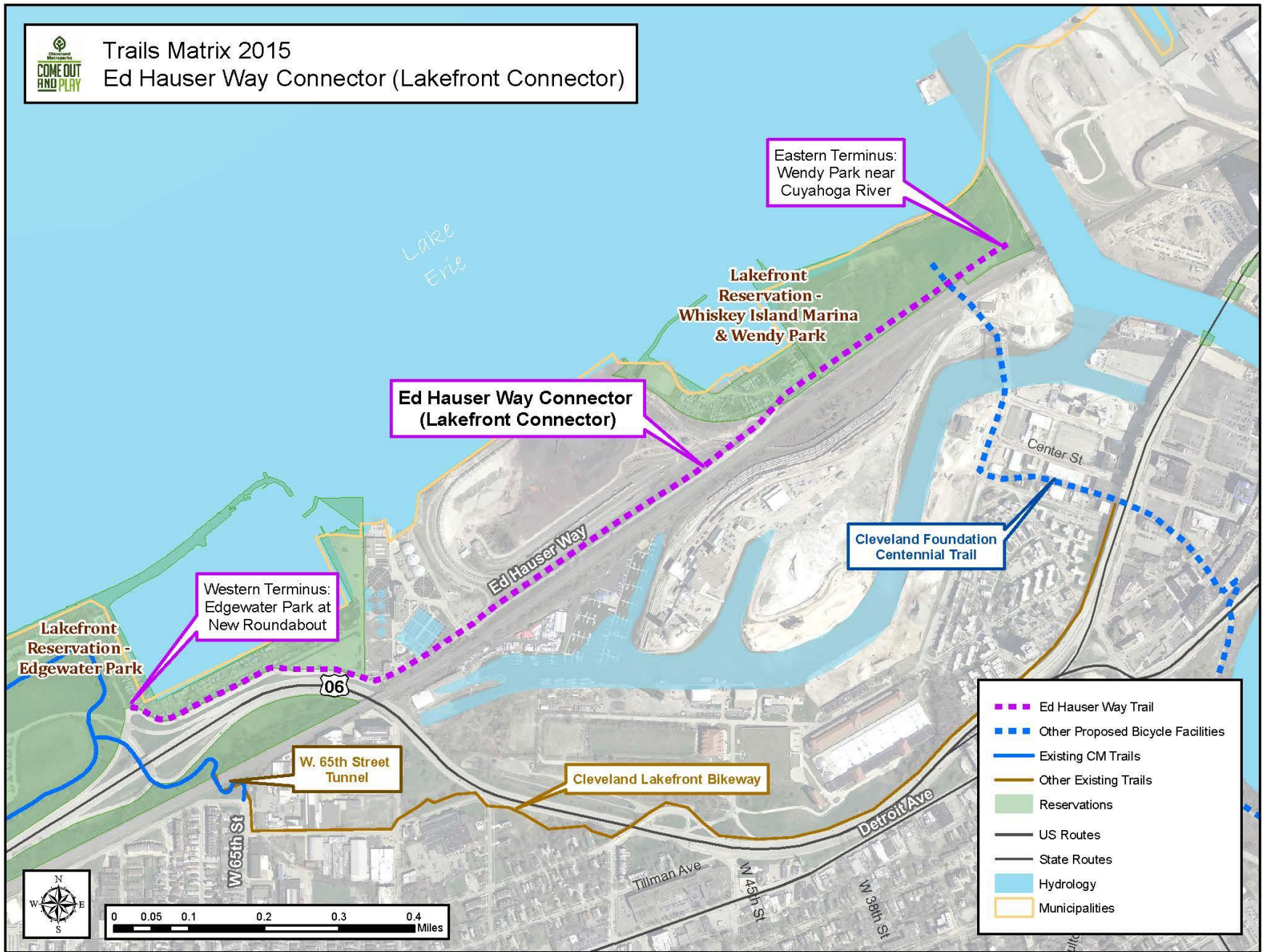
Trails Matrix 2015 Potential Projects





Trails Matrix 2015

Ed Hauser Way Connector (Lakefront Connector)



Eastern Terminus:
Wendy Park near
Cuyahoga River

Lakefront
Reservation -
Whiskey Island Marina
& Wendy Park

Ed Hauser Way Connector
(Lakefront Connector)

Cleveland Foundation
Centennial Trail

Western Terminus:
Edgewater Park at
New Roundabout

Lakefront
Reservation -
Edgewater Park

W. 65th Street
Tunnel

Cleveland Lakefront
Bikeway

- Ed Hauser Way Trail
- Other Proposed Bicycle Facilities
- Existing CM Trails
- Other Existing Trails
- Reservations
- US Routes
- State Routes
- Hydrology
- Municipalities



0 0.05 0.1 0.2 0.3 0.4 Miles



Trails Matrix 2015 Ed Hauser Way Connector (Lakefront Connector)



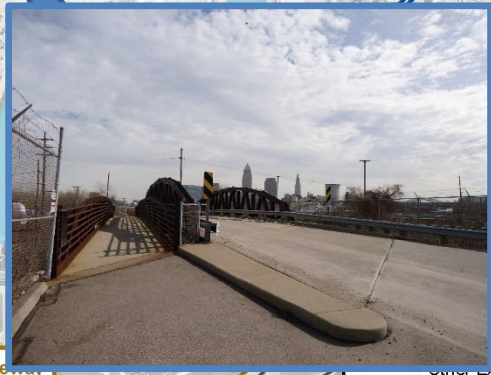
Lake
Eric

Lakefront
Reservation -
Whiskey Island Marina
& Wendy Park

Ed Hauser Way Connector
(Lakefront Connector)



Reservation -
Edgewater Park



Center St

W. 65th Street
Tunnel

Cleveland Lakefront Bikeway

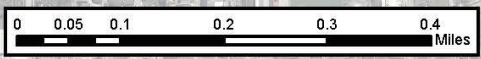
Detroit Ave

Tilman Ave

W 65th St

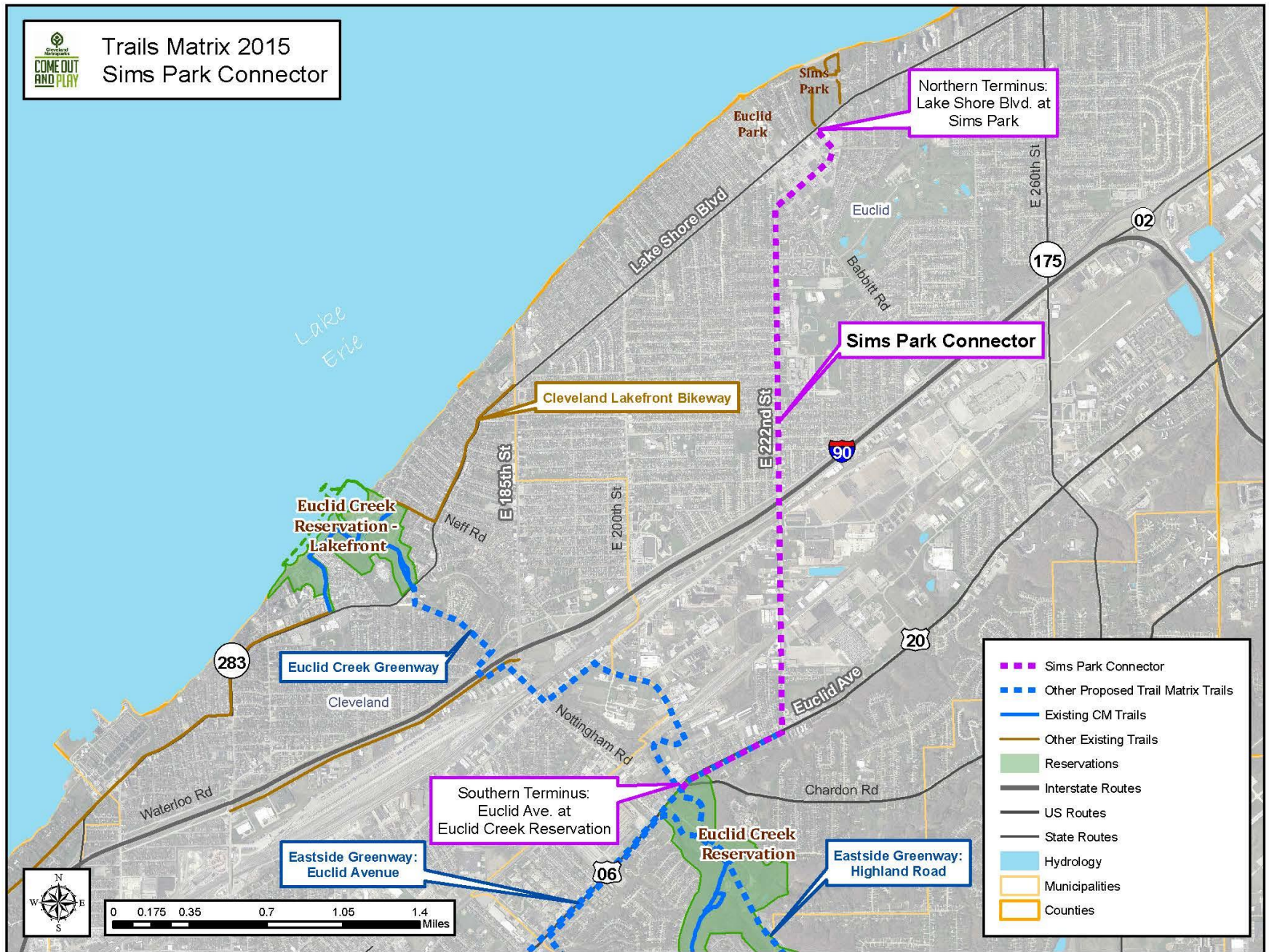
W 30th St

- Ed Hauser Way Trail
- Proposed Bicycle Facilities
- CM Trails
- Other Existing Trails
- Reservations
- US Routes
- State Routes
- Hydrology
- Municipalities





Trails Matrix 2015 Sims Park Connector





Trails Matrix 2015 Sims Park Connector



Lake Erie

Northern Terminus:
Lake Shore Blvd. at
Sims Park

Sims Park Connector



Cleveland Lakefront Bikeway



Euclid Creek

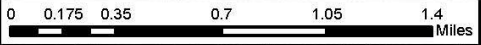
Southern Terminus:
Euclid Ave. at
Euclid Creek Reservation

Eastside Greenway:
Euclid Avenue

Eastside Greenway:
Highland Road

Euclid Creek
Reservation

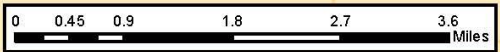
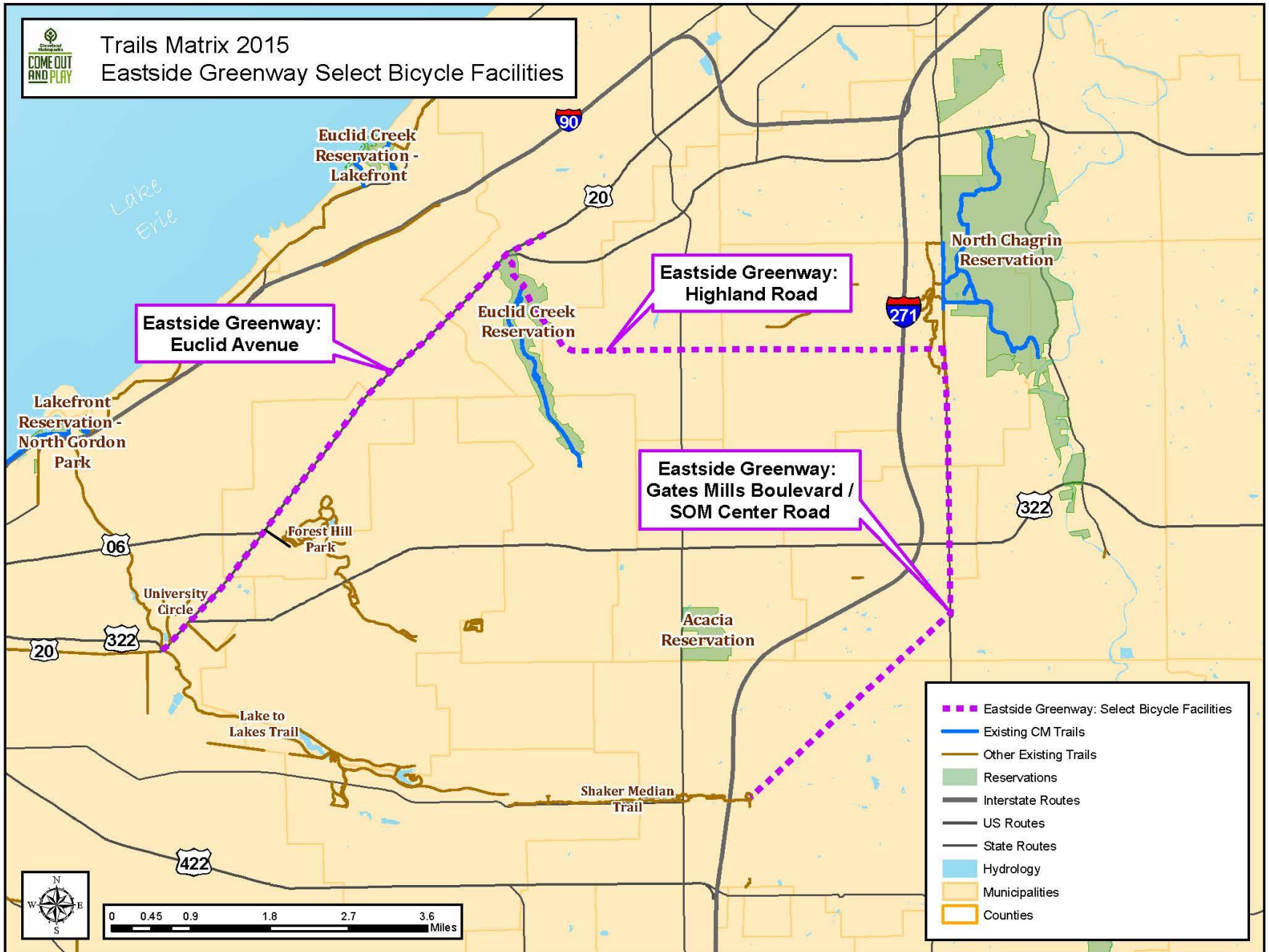
- Sims Park Connector
- Other Proposed Trail Matrix Trails
- Existing CM Trails
- Other Existing Trails
- Reservations
- Interstate Routes
- US Routes
- State Routes
- Hydrology
- Municipalities
- Counties





Trails Matrix 2015

Eastside Greenway Select Bicycle Facilities





Trails Matrix 2015

Eastside Greenway Select Bicycle Facilities



**Eastside Greenway:
Euclid Avenue**



**Eastside Greenway:
Gates Mills Boulevard /
SOM Center Road**



- Eastside Greenway: Select Bicycle Facilities
- Existing CM Trails
- Other Existing Trails
- Reservations
- Interstate Routes
- US Routes
- State Routes
- Hydrology
- Municipalities
- Counties

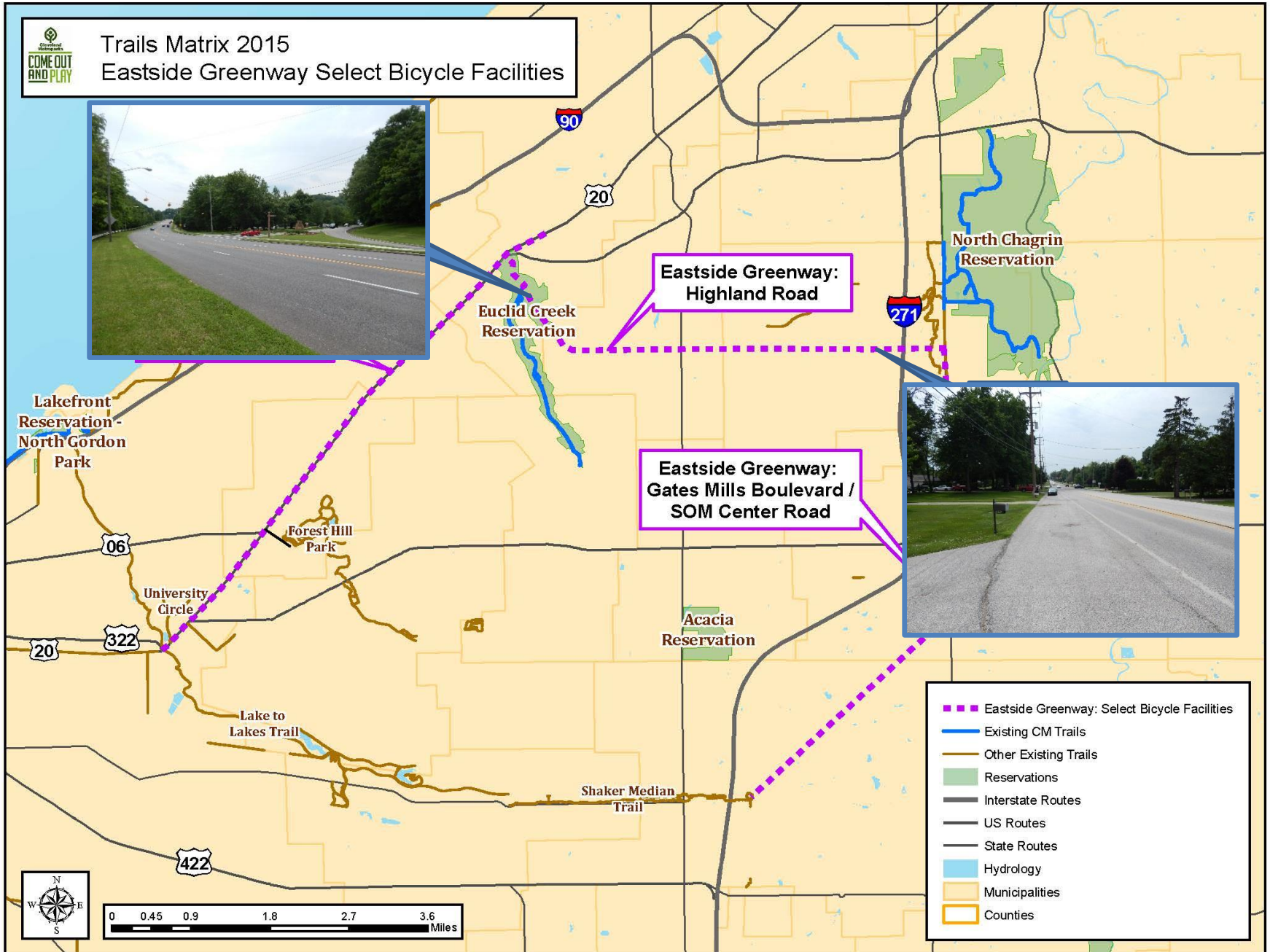


0 0.45 0.9 1.8 2.7 3.6 Miles

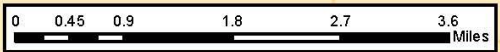


Trails Matrix 2015

Eastside Greenway Select Bicycle Facilities

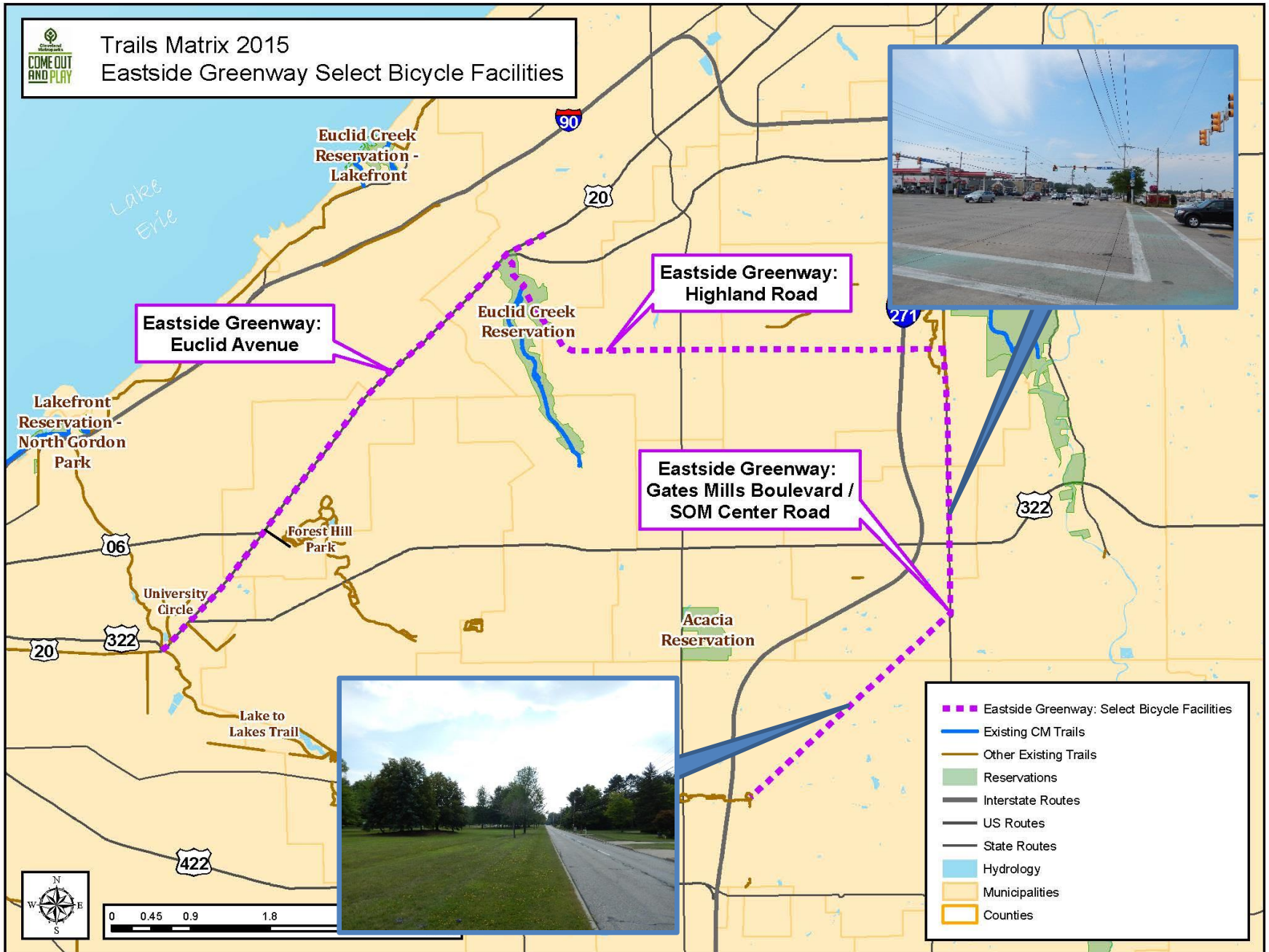


- Eastside Greenway: Select Bicycle Facilities
- Existing CM Trails
- Other Existing Trails
- Reservations
- Interstate Routes
- US Routes
- State Routes
- Hydrology
- Municipalities
- Counties





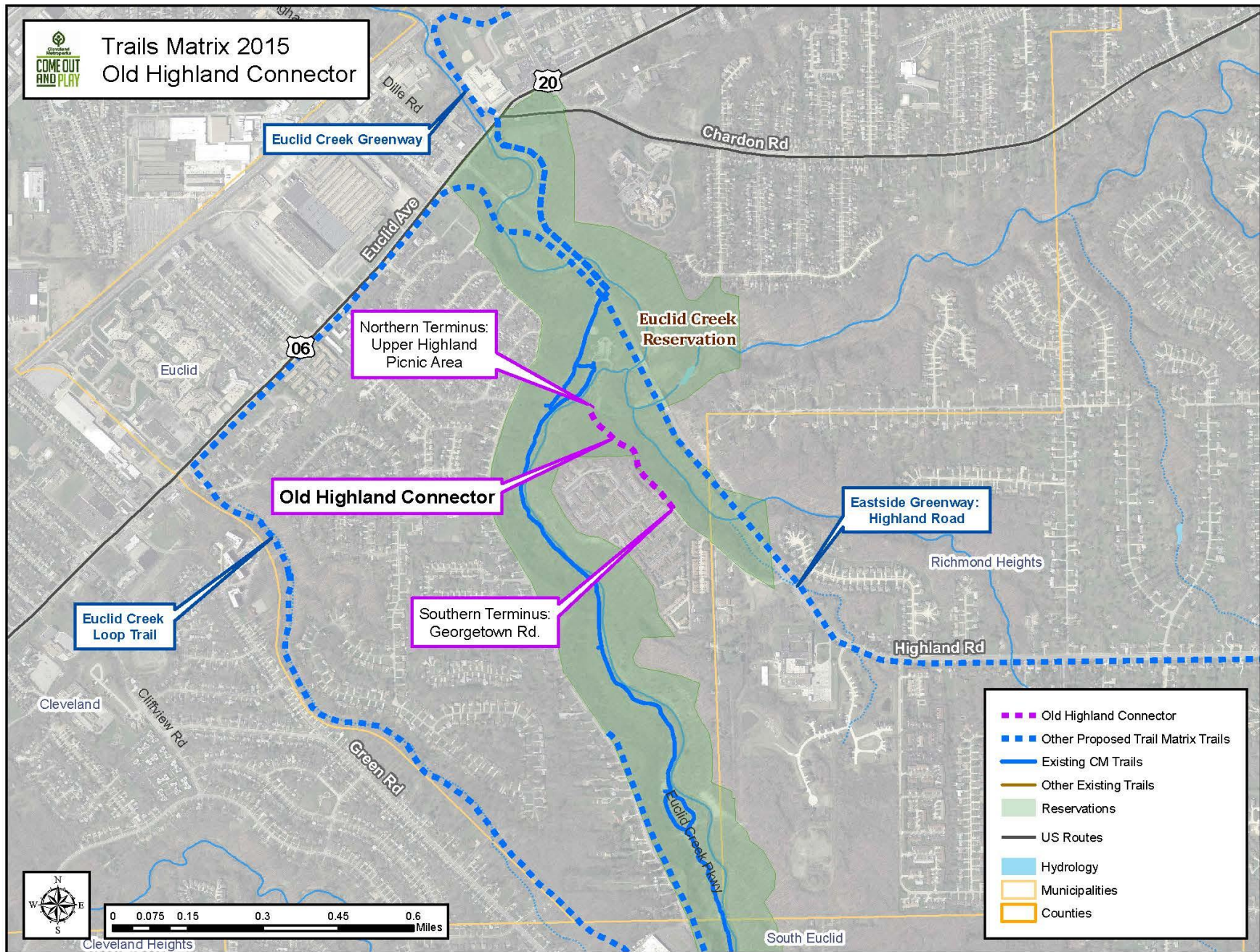
Trails Matrix 2015
 Eastside Greenway Select Bicycle Facilities



- - - Eastside Greenway: Select Bicycle Facilities
- Existing CM Trails
- Other Existing Trails
- Reservations
- Interstate Routes
- US Routes
- State Routes
- Hydrology
- Municipalities
- Counties



Trails Matrix 2015 Old Highland Connector



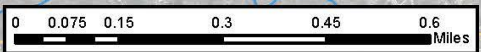
Northern Terminus:
Upper Highland
Picnic Area

Old Highland Connector

Southern Terminus:
Georgetown Rd.

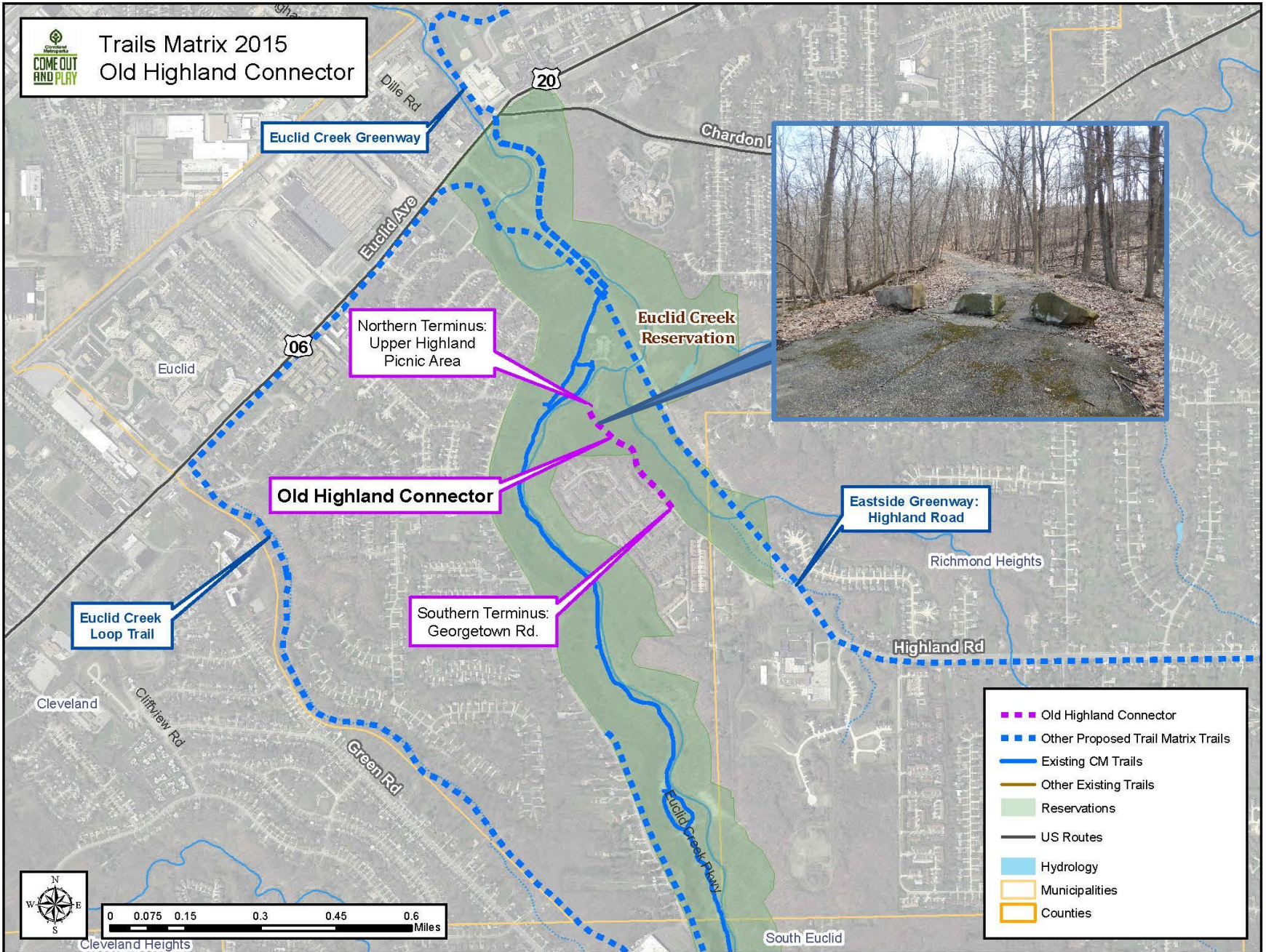
Eastside Greenway:
Highland Road

- Old Highland Connector
- Other Proposed Trail Matrix Trails
- Existing CM Trails
- Other Existing Trails
- Reservations
- US Routes
- Hydrology
- Municipalities
- Counties





Trails Matrix 2015 Old Highland Connector



Northern Terminus:
Upper Highland
Picnic Area

Old Highland Connector

Southern Terminus:
Georgetown Rd.

Eastside Greenway:
Highland Road

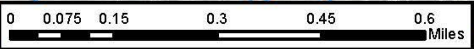
Euclid Creek
Loop Trail

Euclid Creek Greenway

Euclid Creek
Reservation



- - - Old Highland Connector
- - - Other Proposed Trail Matrix Trails
- Existing CM Trails
- Other Existing Trails
- Reservations
- US Routes
- Hydrology
- Municipalities
- Counties



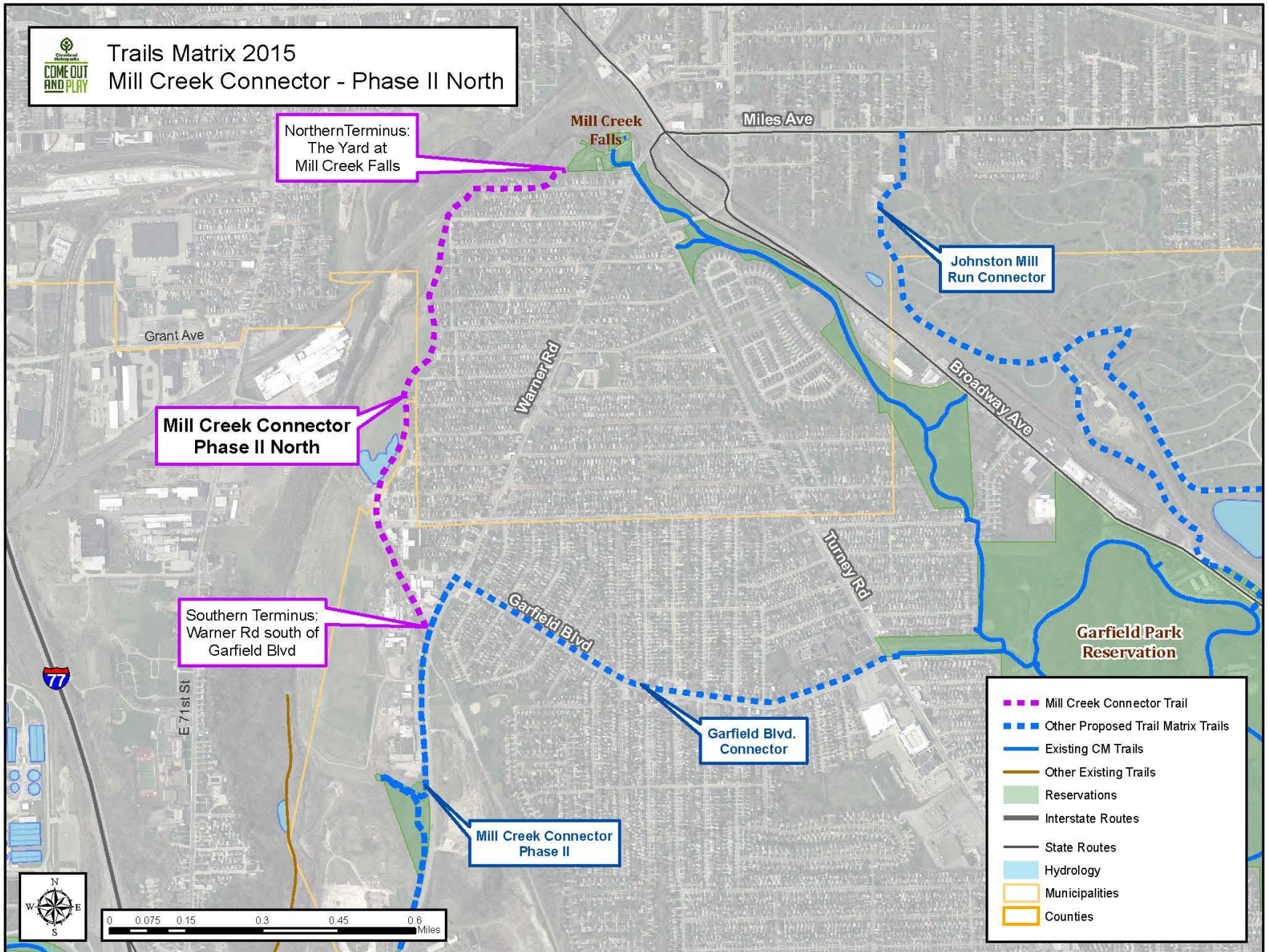
Cleveland Heights

South Euclid



Trails Matrix 2015

Mill Creek Connector - Phase II North



Northern Terminus:
The Yard at
Mill Creek Falls

Mill Creek Connector
Phase II North

Southern Terminus:
Warner Rd south of
Garfield Blvd

Mill Creek Connector
Phase II

Garfield Blvd.
Connector

Johnston Mill
Run Connector

Garfield Park
Reservation

- Mill Creek Connector Trail
- Other Proposed Trail Matrix Trails
- Existing CM Trails
- Other Existing Trails
- Reservations
- Interstate Routes
- State Routes
- Hydrology
- Municipalities
- Counties





Trails Matrix 2015

Mill Creek Connector - Phase II North

Northern Terminus:
The Yard at
Mill Creek Falls

Mill Creek
Falls



Grant Ave

Mill Creek Connector
Phase II North

Warner Rd

May Ave

Southern Terminus:
Warner Rd south of
Garfield Blvd

Garfield Blvd

Garfield Park
Reservation



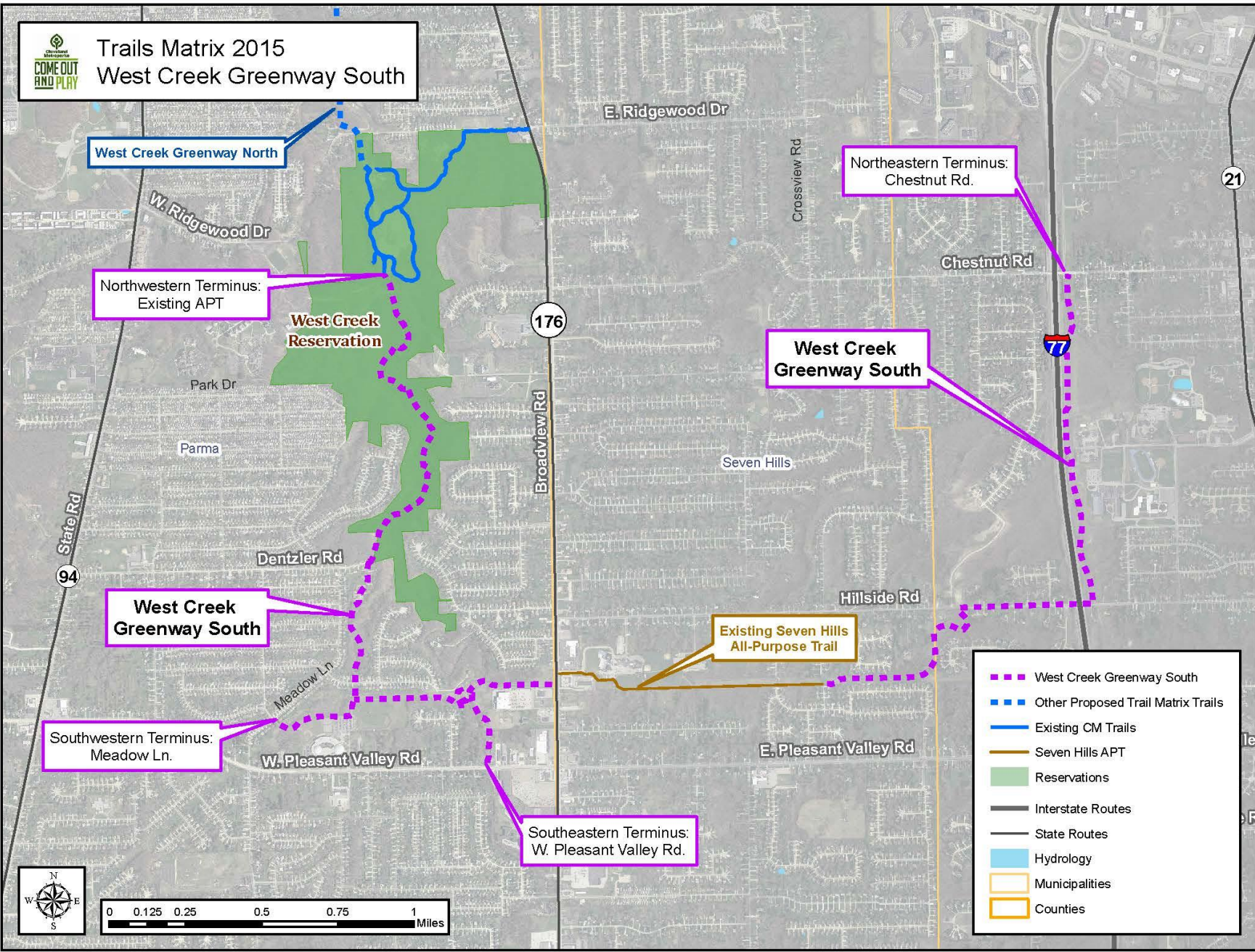
Mill Creek Connector
Phase II

- Mill Creek Connector Trail
- Other Proposed Trail Matrix Trails
- Existing CM Trails
- Other Existing Trails
- Reservations
- Interstate Routes
- State Routes
- Hydrology
- Municipalities
- Counties





Trails Matrix 2015 West Creek Greenway South



West Creek Greenway North

Northwestern Terminus:
Existing APT

**West Creek
Reservation**

Northeastern Terminus:
Chestnut Rd.

**West Creek
Greenway South**

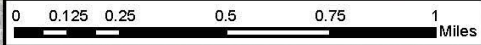
**West Creek
Greenway South**

Existing Seven Hills
All-Purpose Trail

Southwestern Terminus:
Meadow Ln.

Southeastern Terminus:
W. Pleasant Valley Rd.

- - - West Creek Greenway South
- - - Other Proposed Trail Matrix Trails
- Existing CM Trails
- Seven Hills APT
- Reservations
- Interstate Routes
- State Routes
- Hydrology
- Municipalities
- Counties





Trails Matrix 2015 West Creek Greenway South

West Creek Greenway North



Terminus:

Hestnut Rd

West Creek Greenway South

West Creek Greenway South

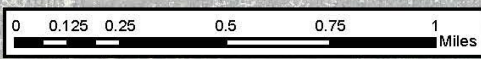
Southwestern Terminus:
Meadow Ln.

Southeastern Terminus:
W. Pleasant Valley Rd.



Greenway South
Selected Trail Matrix Trails
Trails
APT
S
Routes
S
S

Counties



176

Broadview Rd

State Rd
94

Dentzler Rd

Meadow Ln.

W. Pleasant Valley Rd.

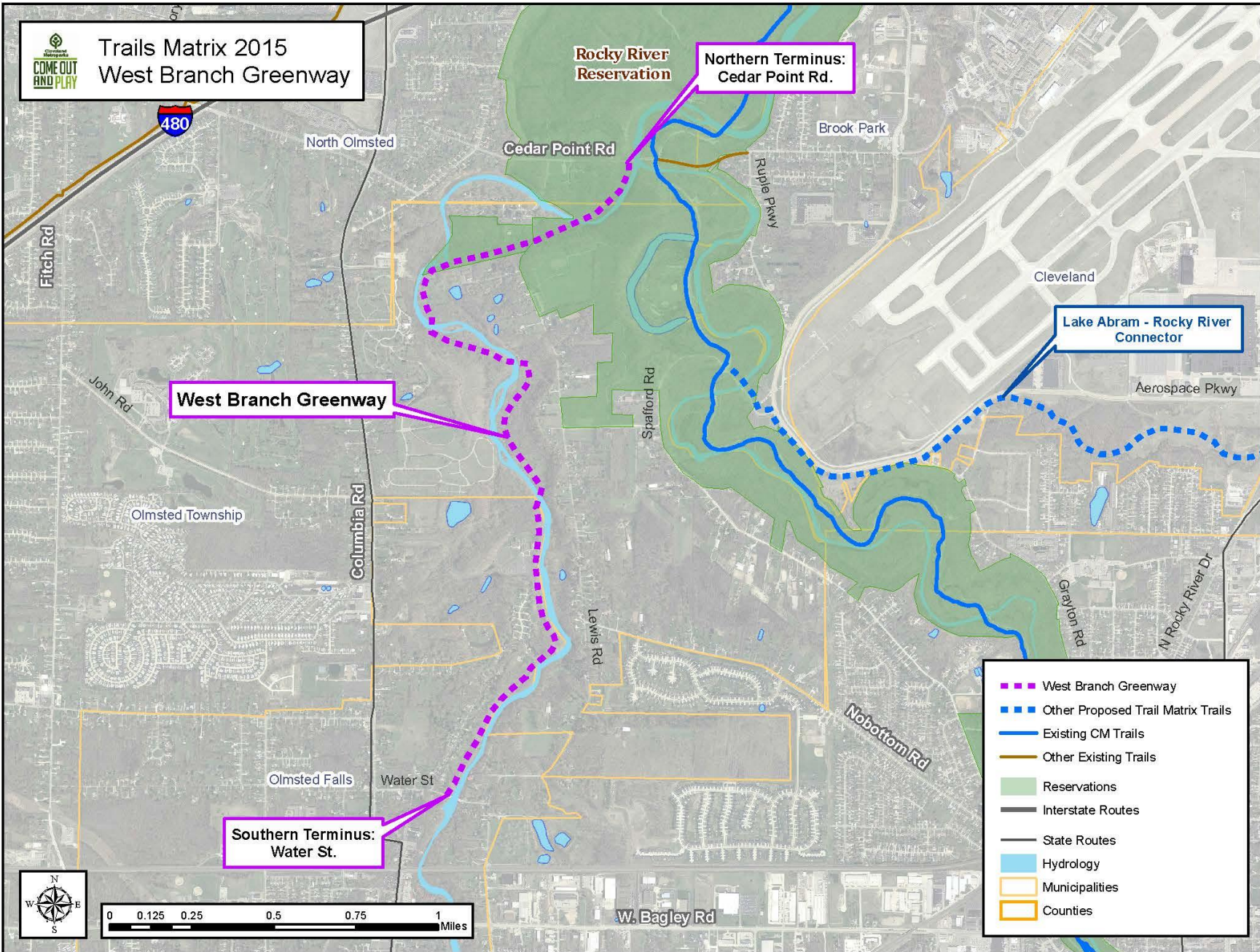
Seven Hills



21



Trails Matrix 2015 West Branch Greenway



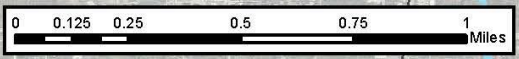
Northern Terminus:
Cedar Point Rd.

West Branch Greenway

Southern Terminus:
Water St.

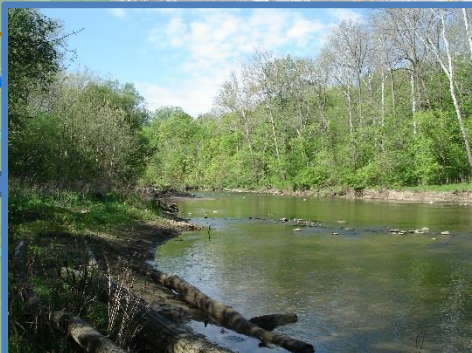
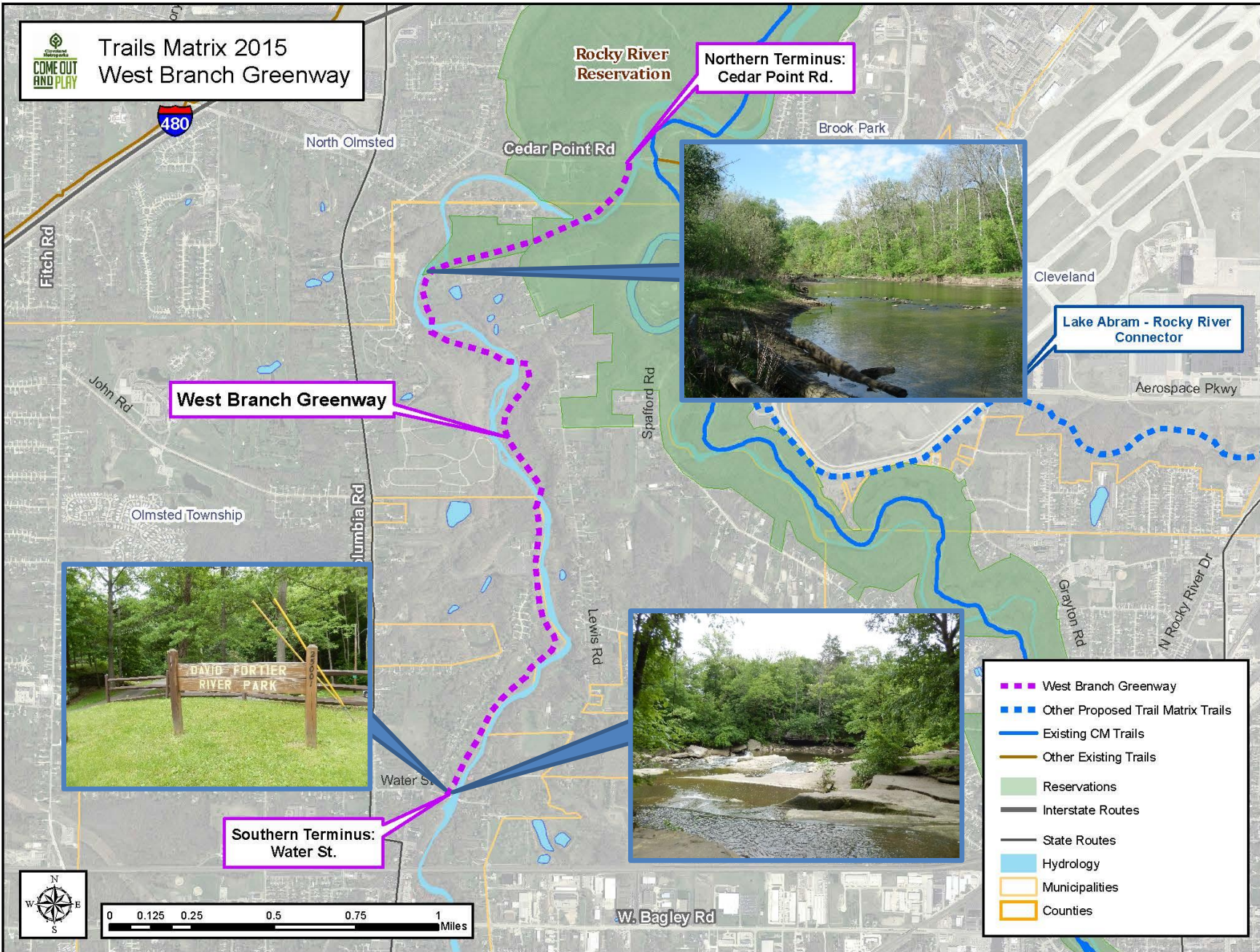
Lake Abram - Rocky River
Connector

- West Branch Greenway
- Other Proposed Trail Matrix Trails
- Existing CM Trails
- Other Existing Trails
- Reservations
- Interstate Routes
- State Routes
- Hydrology
- Municipalities
- Counties





Trails Matrix 2015 West Branch Greenway



Lake Abram - Rocky River Connector



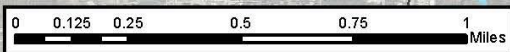
West Branch Greenway



Southern Terminus:
Water St.

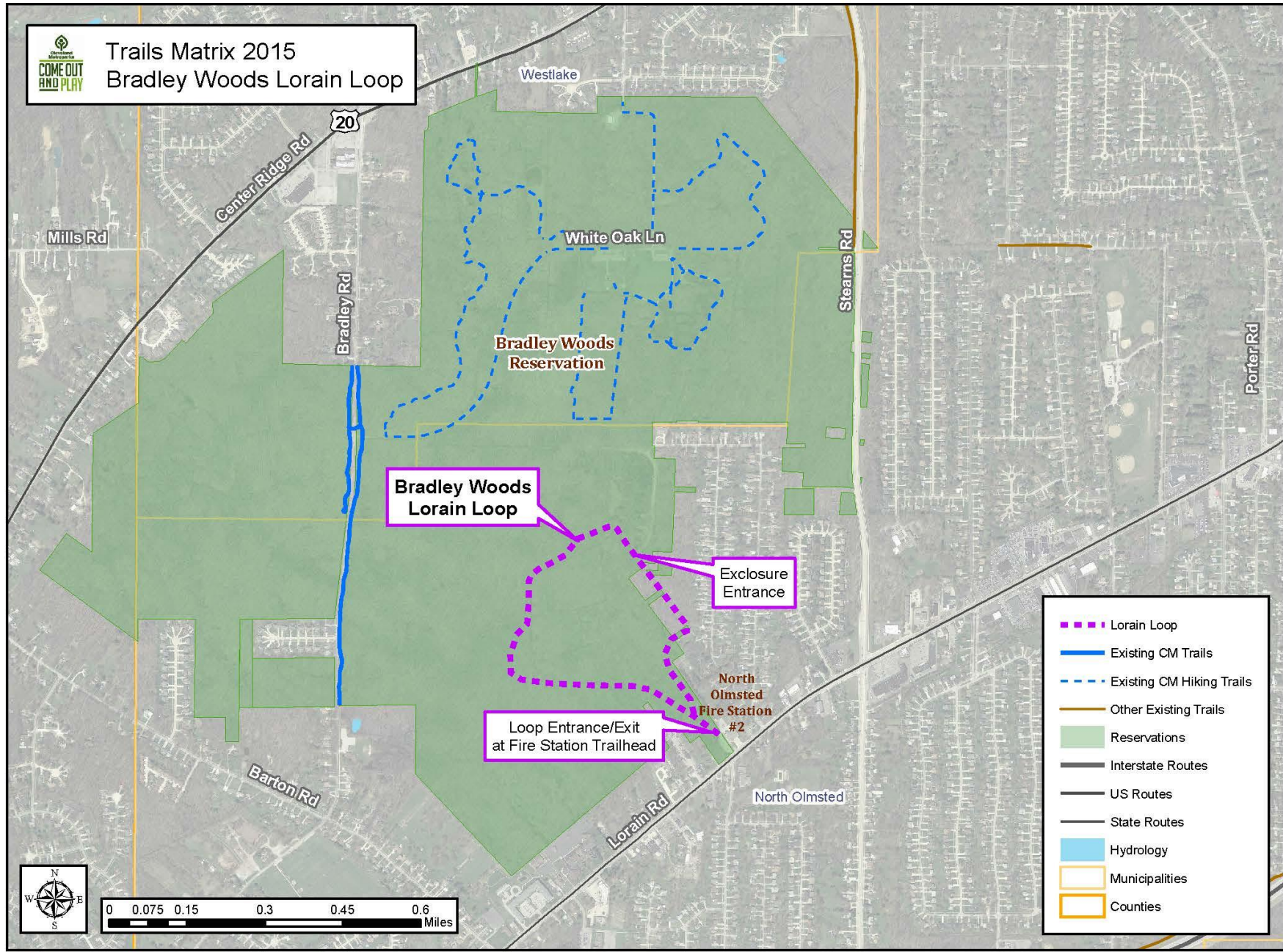
Northern Terminus:
Cedar Point Rd.




- West Branch Greenway
- Other Proposed Trail Matrix Trails
- Existing CM Trails
- Other Existing Trails
- Reservations
- Interstate Routes
- State Routes
- Hydrology
- Municipalities
- Counties





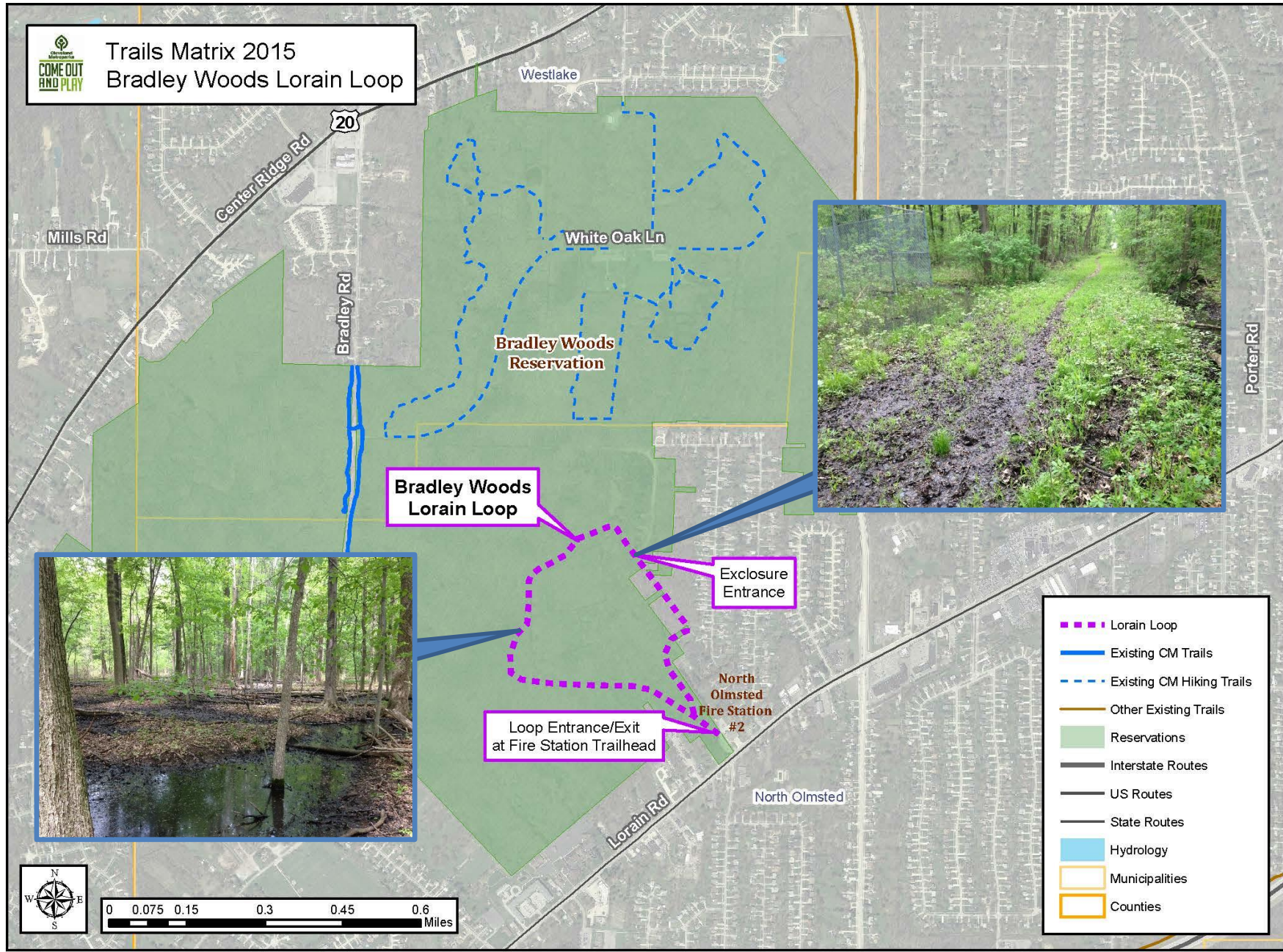
Trails Matrix 2015 Bradley Woods Lorain Loop



-  Lorain Loop
-  Existing CM Trails
-  Existing CM Hiking Trails
-  Other Existing Trails
-  Reservations
-  Interstate Routes
-  US Routes
-  State Routes
-  Hydrology
-  Municipalities
-  Counties



Trails Matrix 2015 Bradley Woods Lorain Loop



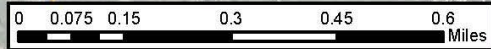
Bradley Woods Lorain Loop

Exclosure Entrance

Loop Entrance/Exit at Fire Station Trailhead

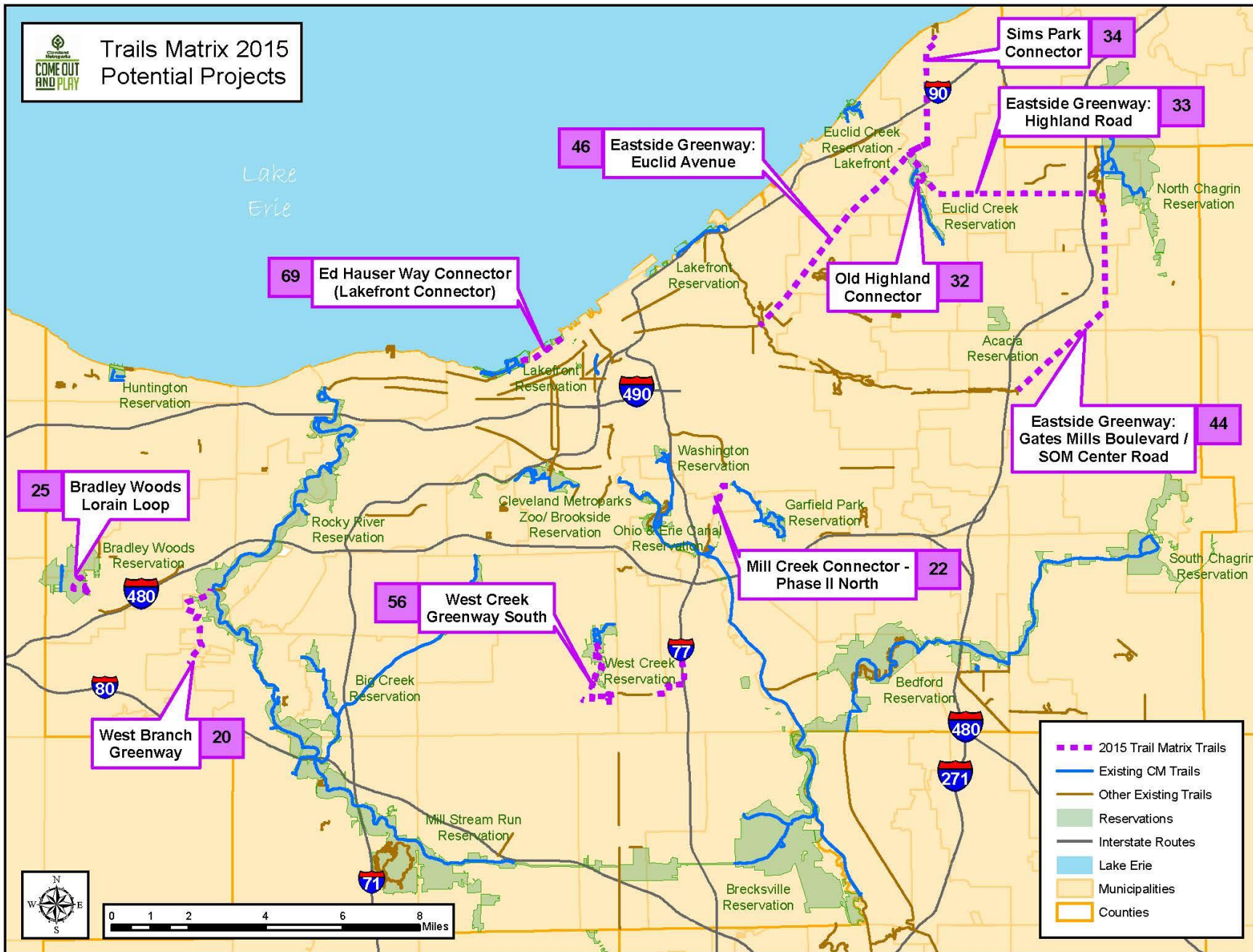
North Olmsted Fire Station #2

- Lorain Loop
- Existing CM Trails
- Existing CM Hiking Trails
- Other Existing Trails
- Reservations
- Interstate Routes
- US Routes
- State Routes
- Hydrology
- Municipalities
- Counties





Trails Matrix 2015 Potential Projects



- - - 2015 Trail Matrix Trails
- Existing CM Trails
- Other Existing Trails
- Reservations
- Interstate Routes
- Lake Erie
- Municipalities
- Counties



Cleveland
Metroparks

**COME OUT
AND PLAY**



Top Scores – All Rounds

<u>Score:</u>	<u>Projects:</u>	<u>Round:</u>
87	Towpath Trail (Stages 1, 3 & 4)	1
81	Valley Parkway Connector	1
78	Cleveland Foundation Centennial Trail (Lake Link Trail)*	1
71	West Creek Greenway Trail – North	2
69	Ed Hauser Way Connector (Lakefront Connector)	3
63	Reroute Cleveland Lakefront Bikeway	1
62	Red Line Greenway	2
60	Bedford – Brecksville Reservation Connector	2
60	Riverwalk	1
57	Euclid Creek Greenway	1
56	West Creek Greenway South	3

Questions?



Sara Byrnes Maier

Senior Strategic Park Planner

216.635.3289 or sbm@clevelandmetroparks.com

