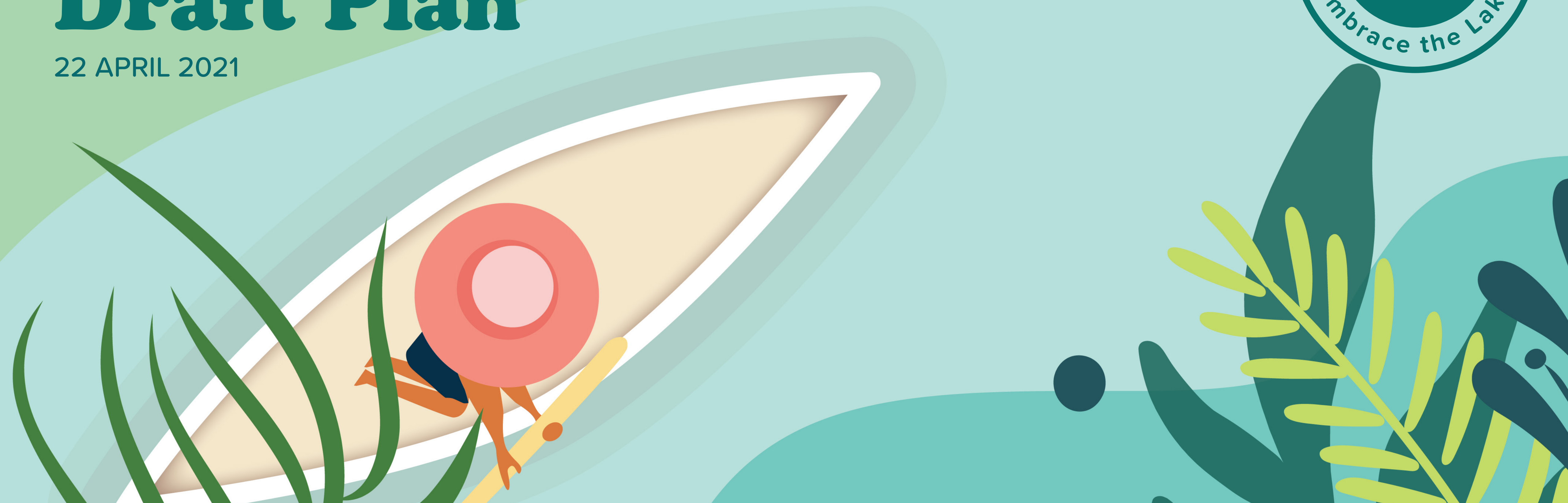


CHEERS Town Hall: Draft Plan

22 APRIL 2021



**Cleveland Harbor
Eastern Embayment
Resilience Study**



Tonight's Agenda

presentation

Introduction

How we Arrived at the Final Concept

The Plan

Implementation

Coalition Building + Next Steps

activity

Q&A

Introduction

What is CHEERS?

CHEERS, aka, the **Cleveland Harbor Eastern Embayment Resilience Study** will be a community-focused resiliency plan for the eastern Cleveland lakeshore that will *Embrace the Lake* as an asset for future generations.

The year-long study will focus on leveraging *nature-based solutions* to improve the environment, reconnect communities to the lake, enhance public health and wellness, bolster the economy, and improve aquatic and terrestrial habitats.

THE STUDY AREA

TO DOWNTOWN CLEVELAND >



< TO UNIVERSITY CIRCLE

ROCKEFELLER PARK

M.L.K. JR. DRIVE

ST. CLAIR AVENUE

E. 55TH STREET

FORMER FIRST ENERGY
POWER PLANT

EAST 55TH MARINA

SOUTH GORDON
PARK

E. 72ND STREET

NORTH GORDON
PARK

EAST 72ND FISHING AREA

CLEVELAND LAKEFRONT
NATURE PRESERVE

KIRTLAND PARK

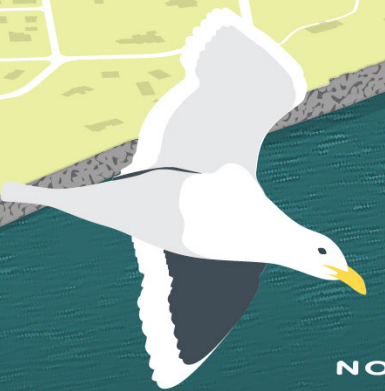
BURKE LAKEFRONT
AIRPORT

CDF 9

CDF 12

FEDERAL SHIPPING CHANNEL

LAKE ERIE



the Partners



**City of
Cleveland**



**Ohio
Department of
Natural
Resources**



**Ohio
Department of
Transportation**



**The Port of
Cleveland**



**Cleveland
Metroparks**

*Project Funding is provided by a grant
from the National Fish and Wildlife
Foundation and matching funds from
the five project partners.*

the Project Team & Stakeholders

project team

City of Cleveland staff
City of Cleveland - Ward 10
Councilman Hairston
Cleveland Neighborhood
Progress
Cleveland Metroparks
Cuyahoga County
Doan Brook Watershed
Partners
Famicos
First Energy
Northeast Ohio Regional Sewer
District (NEORS D)
Northeast Ohio Areawide
Coordinating Agency (NOACA)
Trust for Public Land
University Circle, Inc.
USDA - Burke Wildlife Specialist

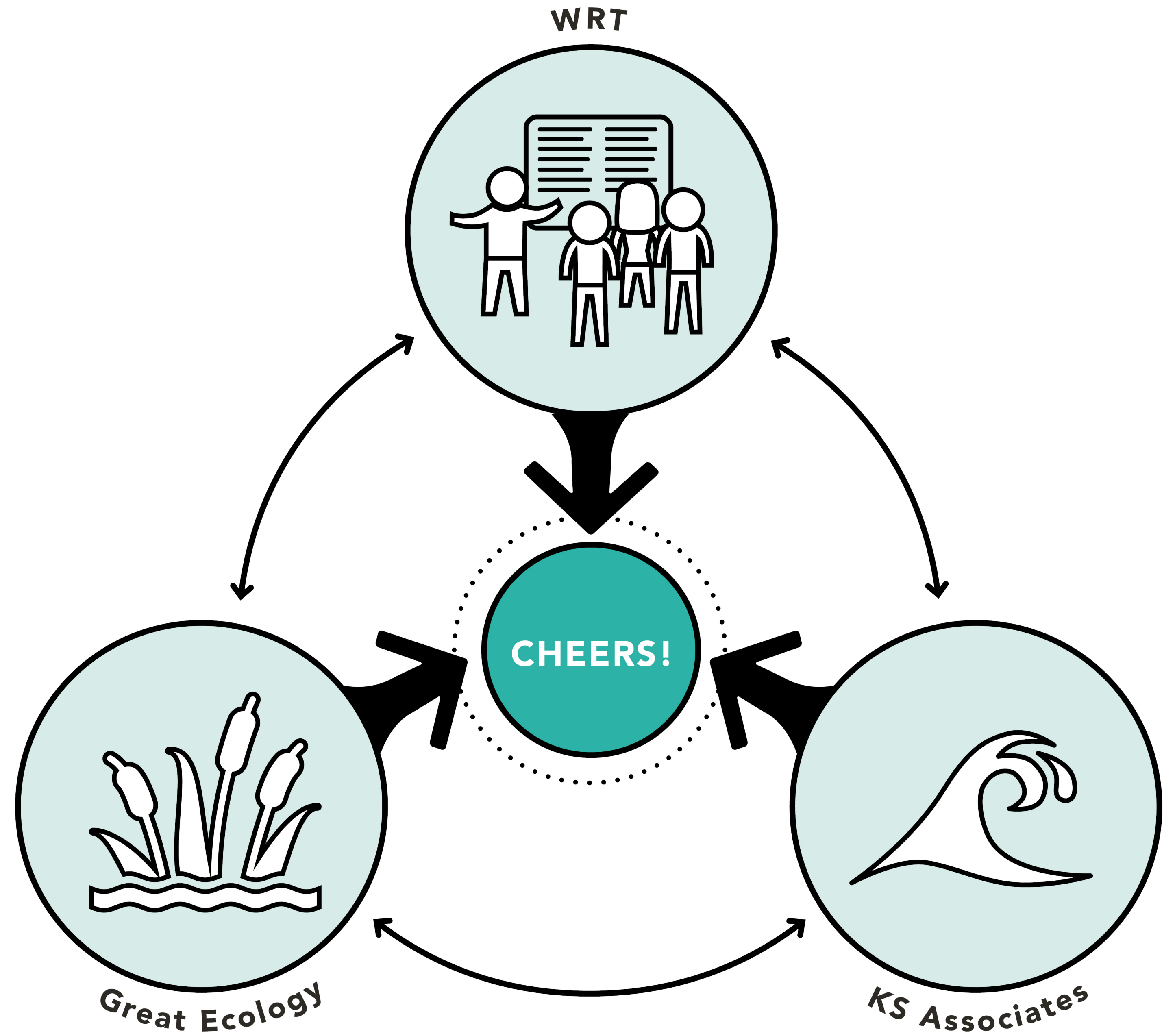
stakeholder committee

Ariel International
Bike Cleveland
Bluestone Heights
Campus District
CEI
City of Cleveland - Wards 7
(Councilman Jones) and 9
(Councilman Conwell)
Cleveland Cultural Gardens
Cleveland Museum of
Natural History
Cleveland State University -
MUPD
Collinwood CDC
Cuyahoga Soil and Water
Conservation District
Cuyahoga County
Cuyahoga County Council

District 7 Councilwoman
Conwell
Destination Cleveland
Dominion Energy
Downtown Cleveland
Alliance
City of Euclid
Forest City Yacht Club
Greater Cleveland Regional
Transit Authority (GCRTA)
Green City Blue Lake
Green Ribbon Coalition
Holden Parks Trust
Ingenuity
InterCity Yacht Club
Lake Erie Coastal Ohio Trail
Scenic Byway
Lakeside Yacht Club

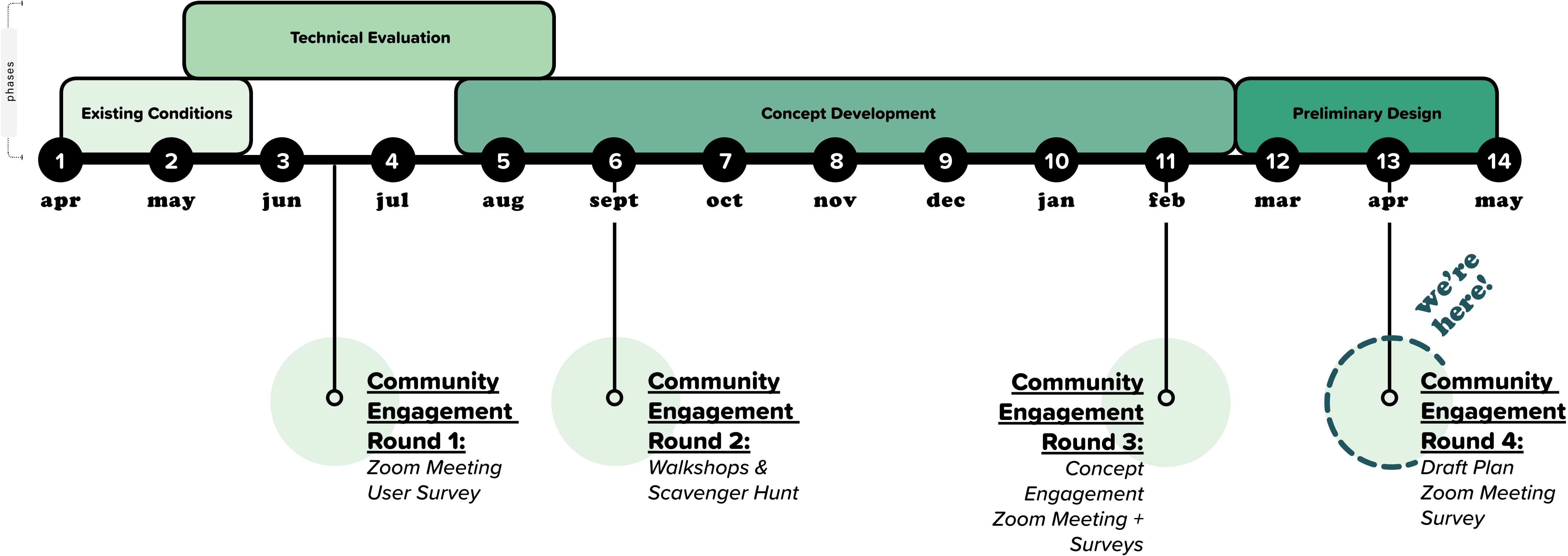
LAND studio
MidTown / AsiaTown
MyCom Youth Council
ODNR Division of Wildlife
St. Clair Superior
Development Corporation
Shoreline
Slovenian National Home
St. Martin de Porres High
School
The Foundry
UMADOP
US Army Corps of Engineers
Village of Bratenahl
West Creek Conservancy
Western Reserve Land
Conservancy

the Consultant Team

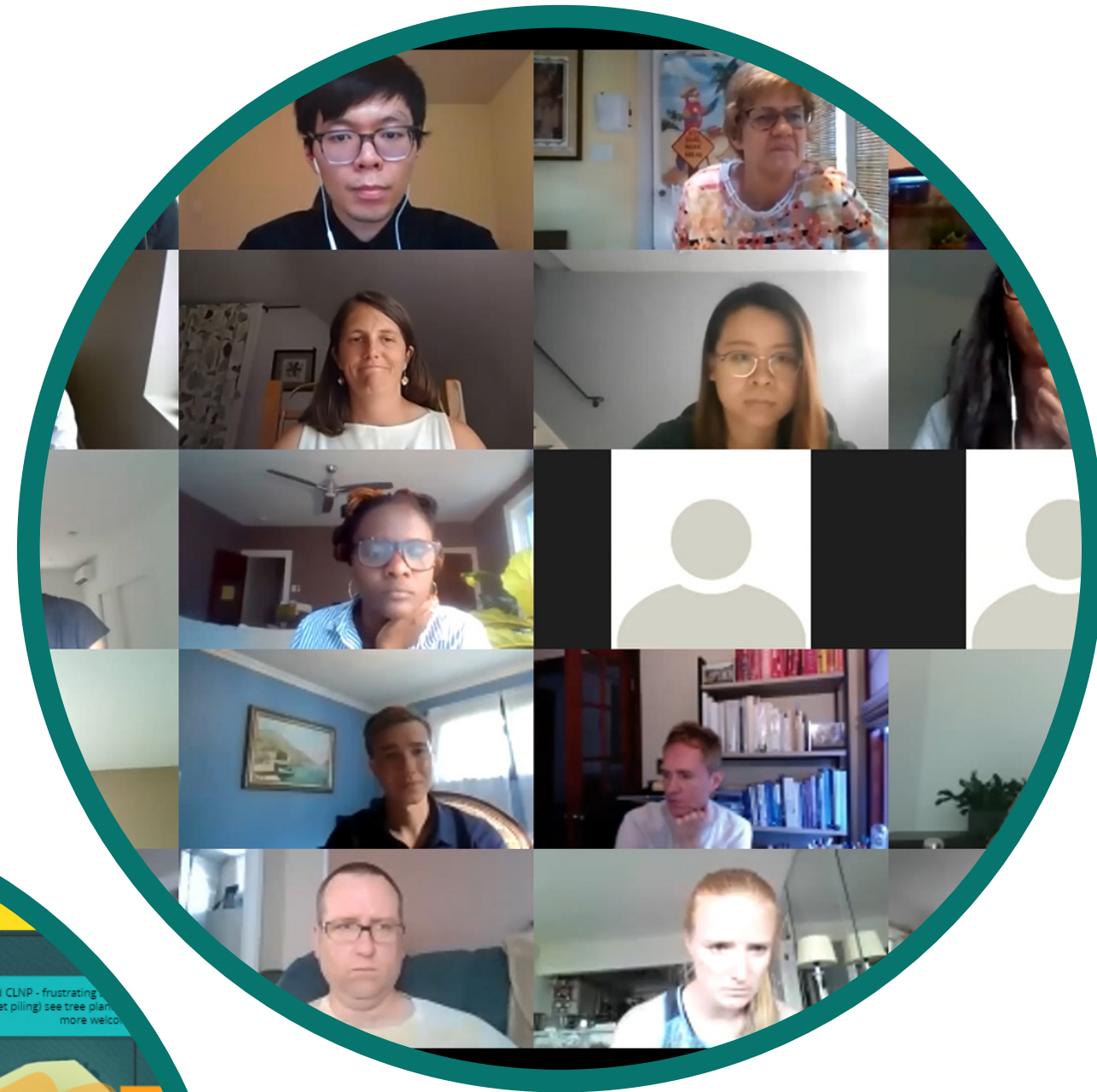


**How we got
here.**

Engagement

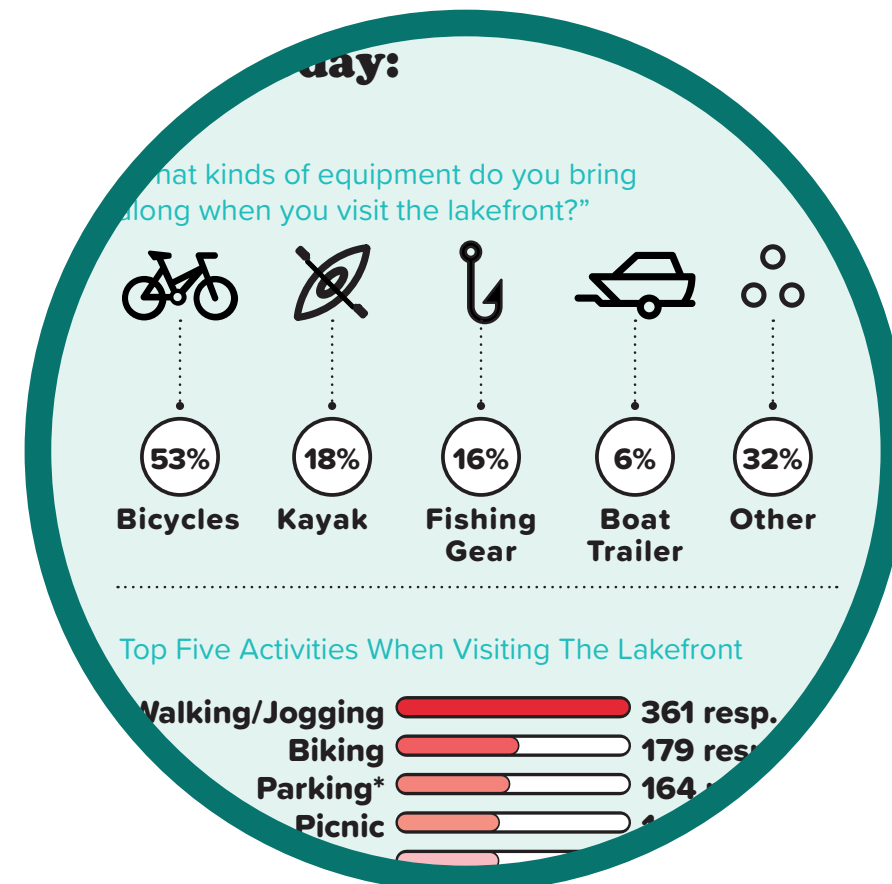


Understanding (round 1)



ZOOM MEETING & USER SURVEY

- + understanding of how community members use current spaces
- + what users want to see in the future (building upon the 2004 Waterfront District Plan & plans)
- + 600+ participants



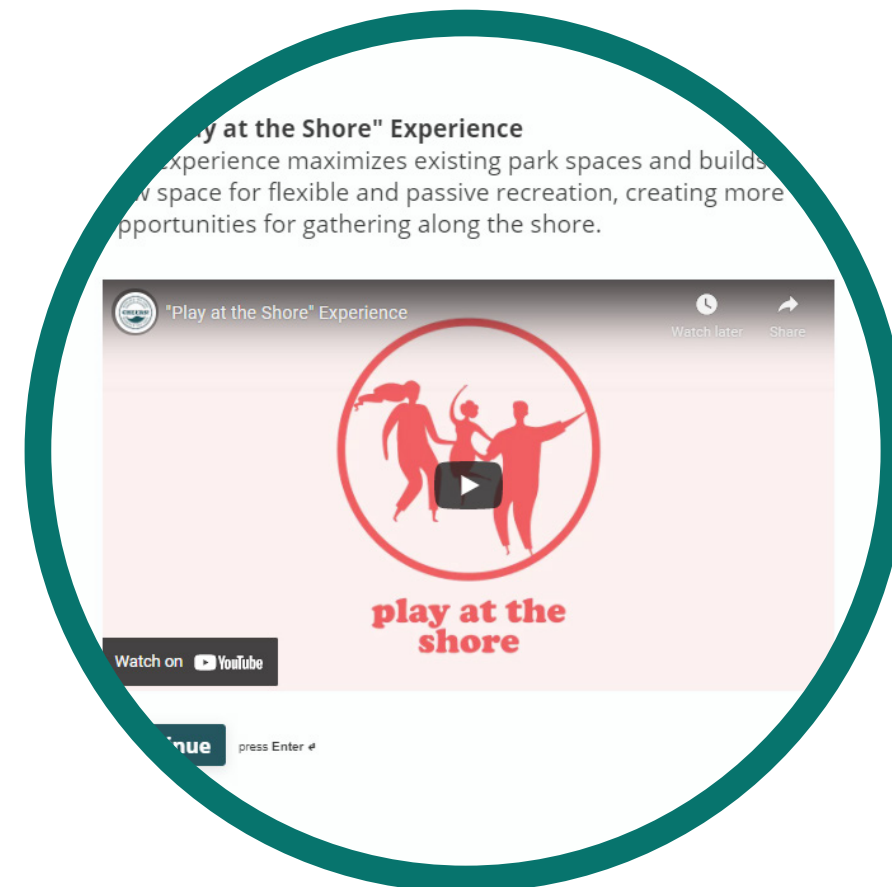
Idea Generation (round 2)



WALKSHOPS & SCAVENGER HUNT

- + get outside to experience the lakefront - what is working, what is not working
- + talk through ideas for the lakefront - areas where we should focus attention / investment
- + 100+ participants

Exploration (round 3)



ZOOM MEETING & INTERACTIVE SURVEYS

- + what goals / principles are most important to community members
- + which projects do community members feel would be most impactful to the future of the lakefront
- + 300+ participants

Refinement (round 4)



ZOOM MEETING & WALKSHOPS

- + refine plan as we move into future stages
- + input on early action projects

CITY OF CLEVELAND

- + Access & Connectivity
- + Recreation (fishing, picnic)
- + Equity (east side)
- + Cohesive Lakefront (asset, tourism)

ODNR

- + Aquatic Restoration
- + Maximize Natural Habitat

ODOT

- + Reduce Maintenance Costs
- + Improve Safety (wave action)
- + Decrease Salting / Icing

CHEERS!

- + Recreation (fishing, picnic)
- + Trails / Walkways
- + Increase Natural Areas
- + Create “go-to” Destination
- + Connect Park Spaces

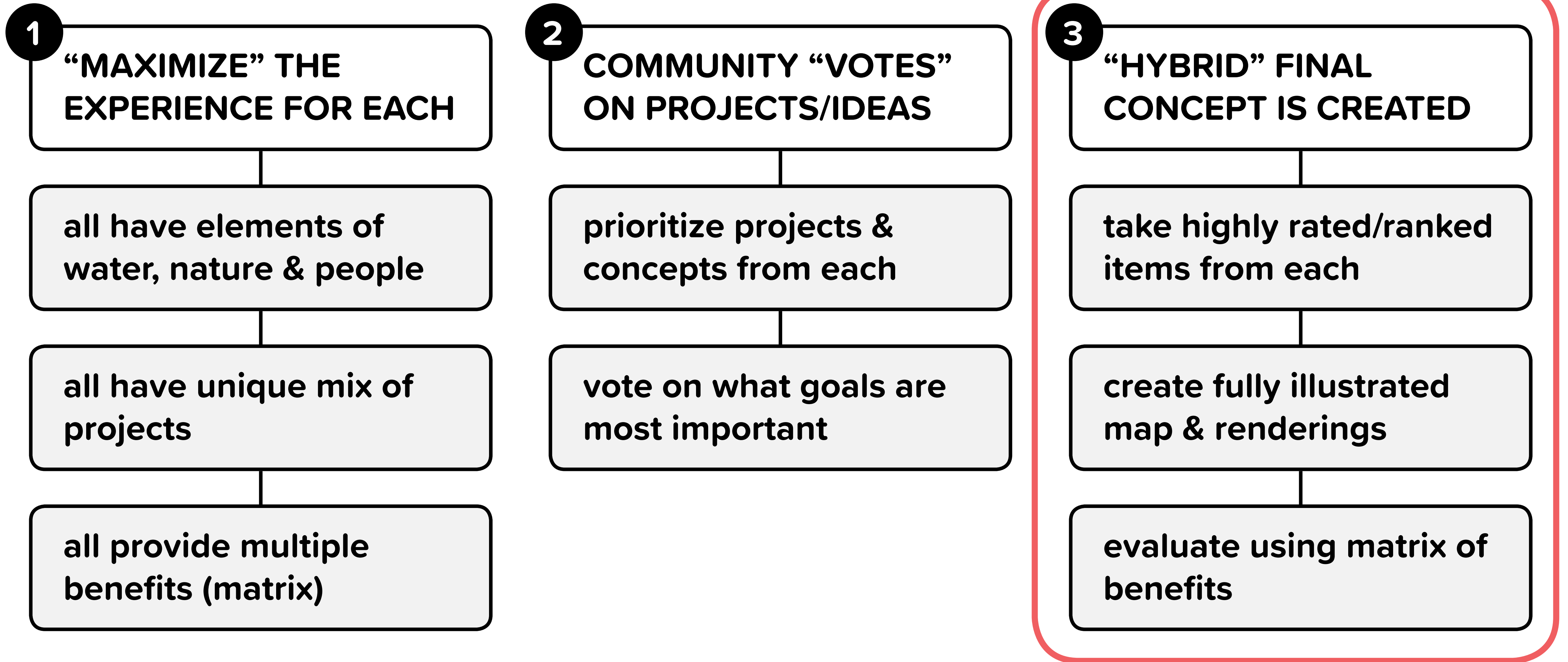
CLEVELAND METROPARKS

- + Dredge Material Capture
- + Beneficial Reuse Program
- + Support City Tourism

PORT OF CLEVELAND



A roadmap to a resilient Lakefront:



The Plan

To improve the resiliency of the lakefront we need to consider:



Goal is to bring water, nature, and people into balance!



**touch the
water**

+



**play at the
shore**

+



**connect with
nature**

by proposing nature-based solutions that:



people and communities to the Lake



spaces that meet the needs of the community



natural systems that enhance the wellbeing of the Lake and communities



the legacy, history, and significance of the Lake

Creating the Hybrid

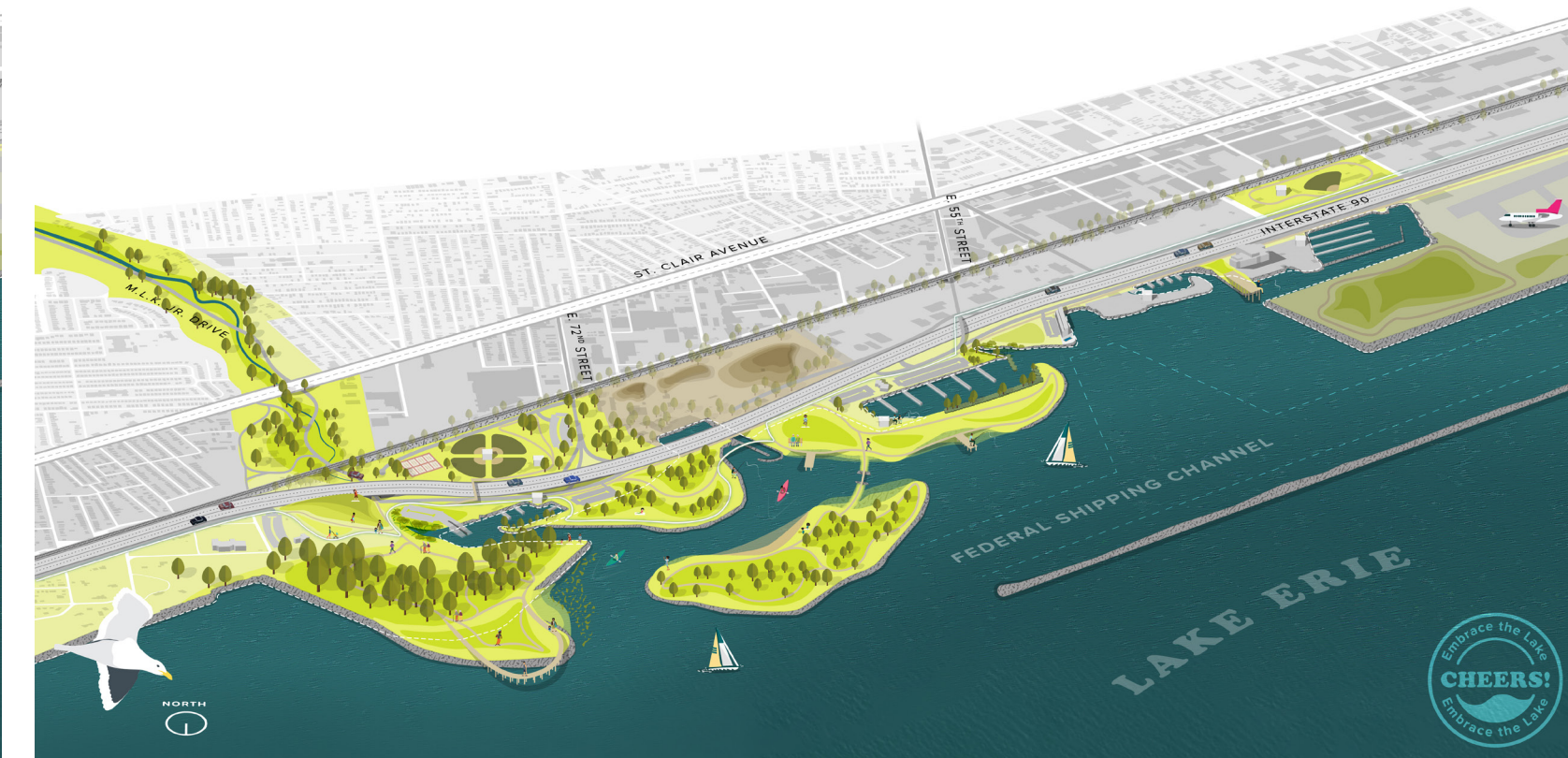
Highest rated projects and goals from the three “themes”



**touch the
water**



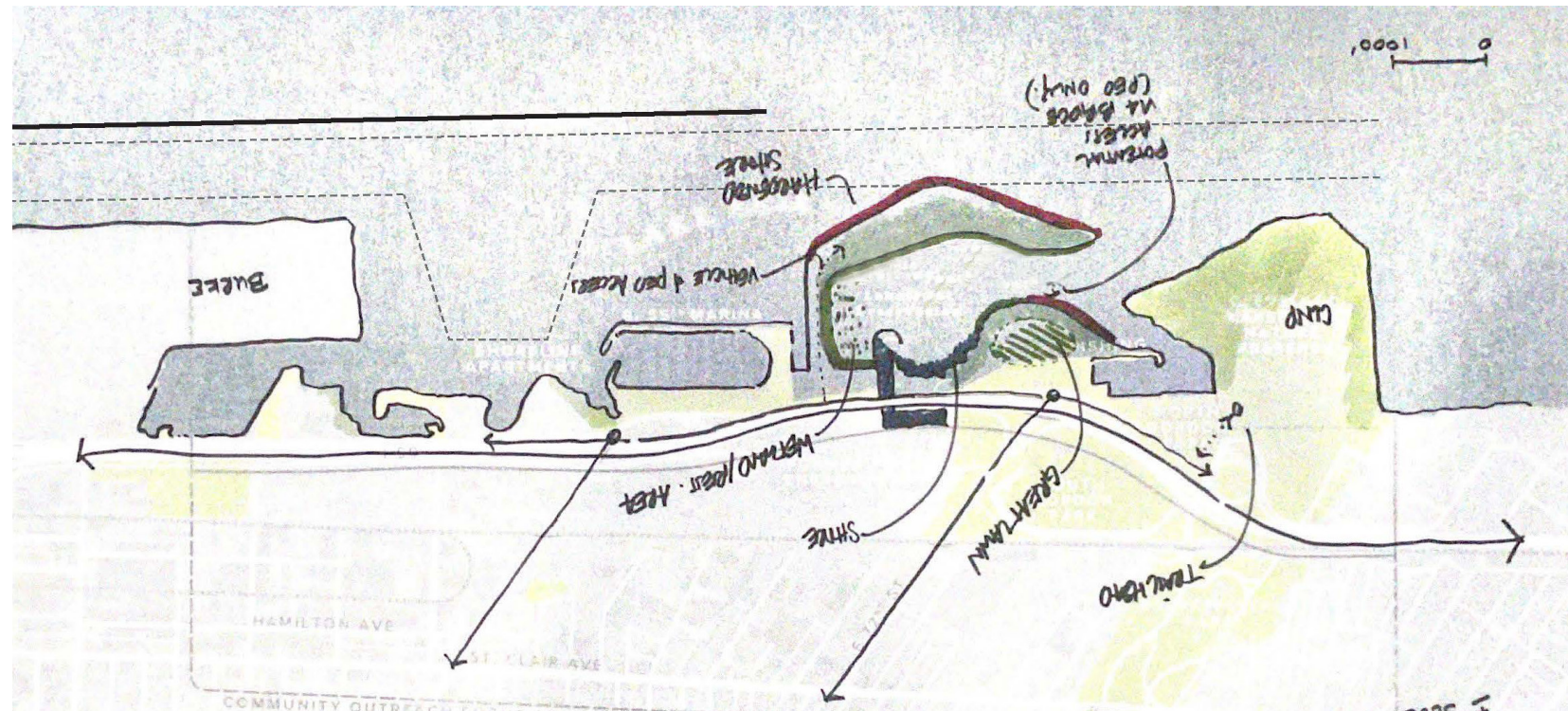
**play at the
shore**



**connect with
nature**

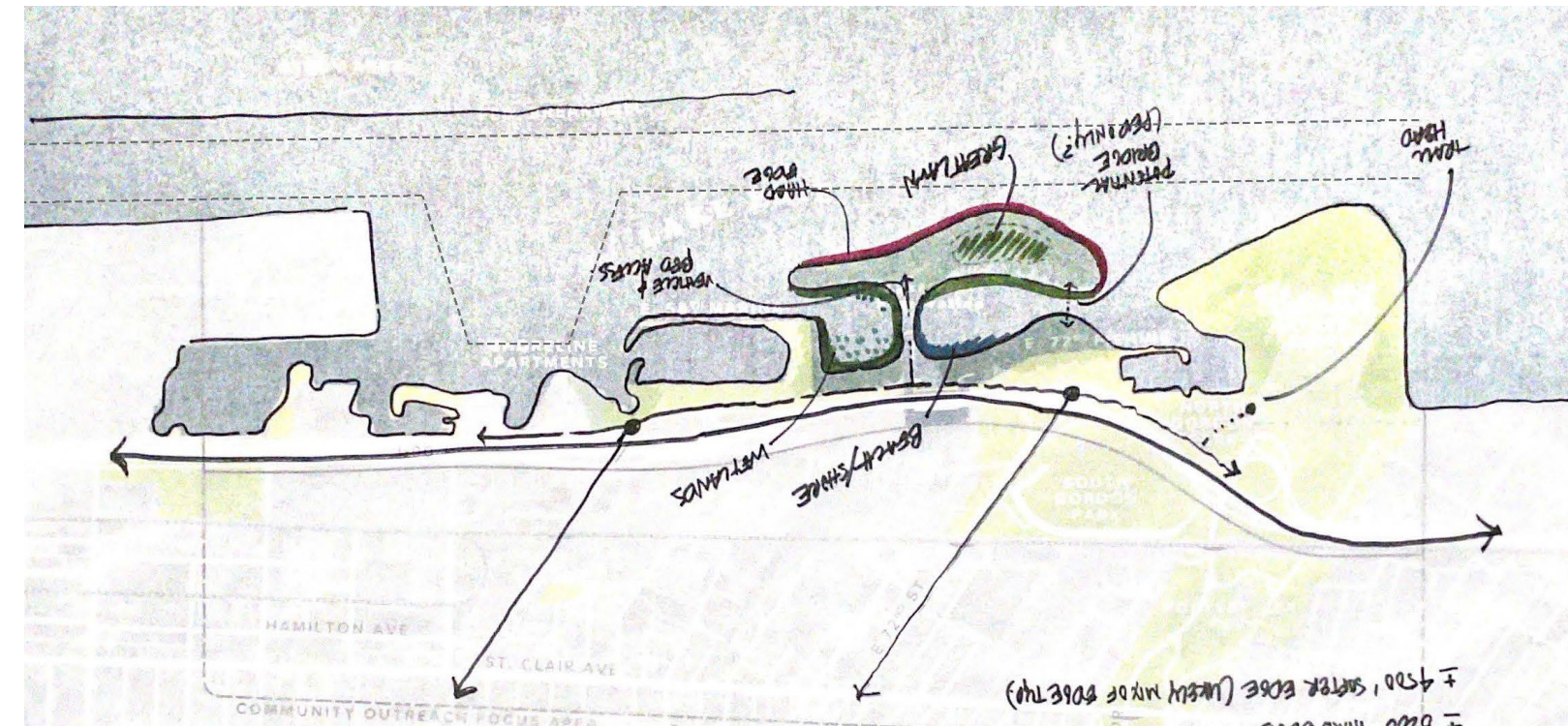
Creating the Hybrid

Combining the highest rated projects & programs with necessary engineering measures



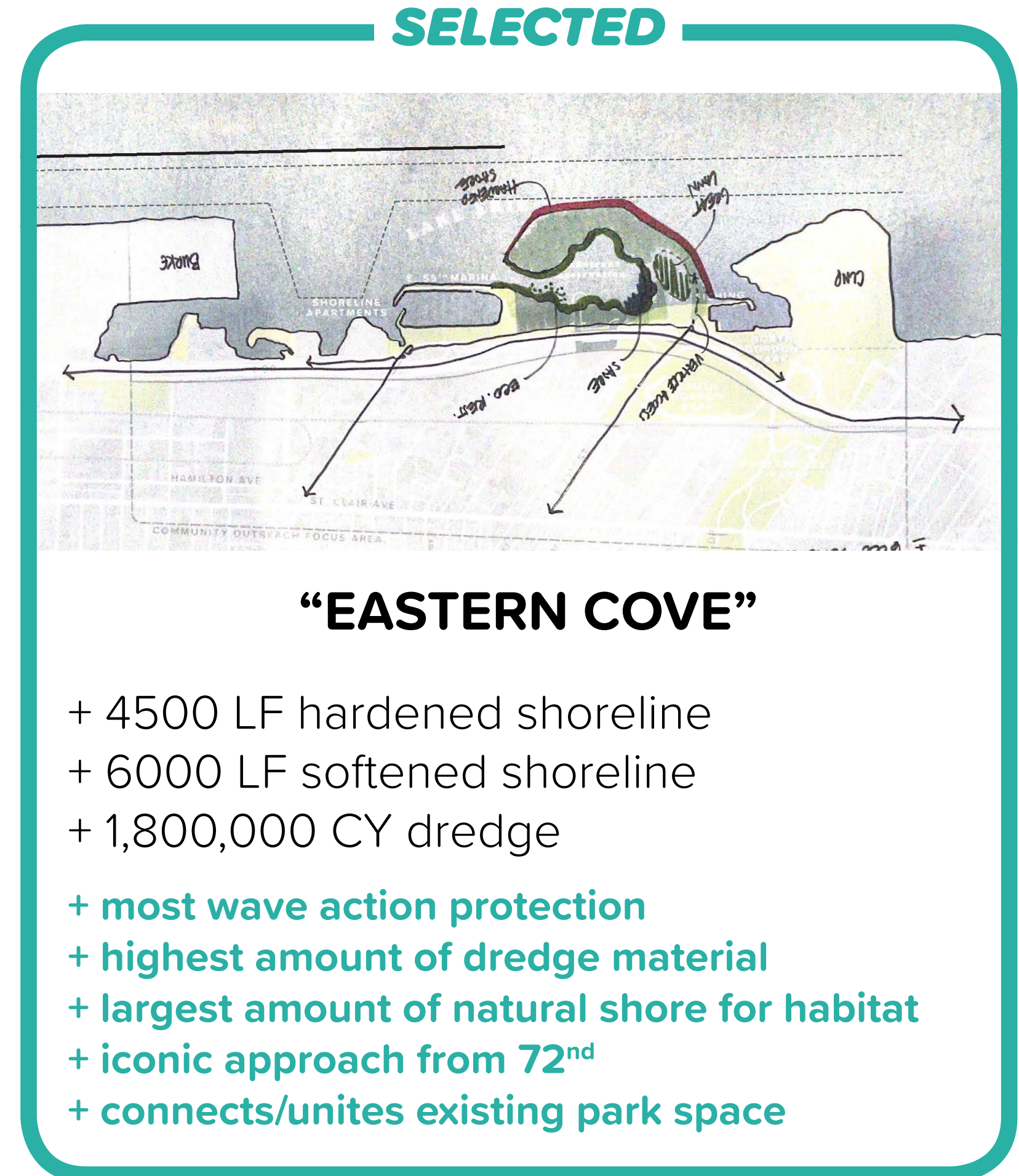
“CONNECTED BARRIER”

- + 4000 LF hardened shoreline
- + 5800 LF softened shoreline
- + 800,000 CY dredge



“CENTERED ISLAND”

- + 8200 LF hardened shoreline
- + 4500 LF softened shoreline
- + 1,300,000 CY dredge



“EASTERN COVE”

- + 4500 LF hardened shoreline
- + 6000 LF softened shoreline
- + 1,800,000 CY dredge
- + most wave action protection
- + highest amount of dredge material
- + largest amount of natural shore for habitat
- + iconic approach from 72nd
- + connects/unites existing park space





LAKE ERIE

BURKE LAKEFRONT AIRPORT

FOREST CITY YACHT CLUB

LAKESIDE YACHT CLUB

KIRTLAND PARK

CLEVELAND METROPARKS LAKEFRONT RESERVATION

SHORELINE APARTMENTS

E. 55TH MARINA

GIDDINGS HABITAT SHORE

E. 55TH STREET

CLEVELAND LAKEFRONT BIKEWAY

ST. CLAIR AVENUE

THE EASTERN FISHING COVE

LAWN

PICNIC PAVILION

E. 55TH FISHING

FLEXIBLE EVENT SPACE

PICNIC GROVE

NEW PEDESTRIAN BRIDGE & GATEWAY

VIEWING PAVILION

PICNIC GROVE

LAWN

THE COVE

THE SHORE & LAUNCH

THE LAKESHORE

LAKESHORE DRIVE

E. 72ND STREET

E. 72ND GREENWAY

SOUTH GORDON PARK

ENHANCED PEDESTRIAN BRIDGE

ROCKEFELLER PARK

HARRISON DILLARD BIKEWAY

MULTI-USE TRAIL

NATURE PLAY

OVERLOOK

NATURE TRAIL

BOARDWALK TRAIL

NATURE PLAY

THE HABITAT LOOP

DOAN HABITAT SHORE

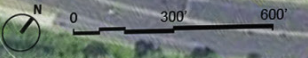
NORTH GORDON PARK

CLEVELAND LAKEFRONT NATURE PRESERVE

INTERCITY YACHT CLUB

E. 72ND GATEWAY

MLK JR. DRIVE





Connect

Create more opportunities to touch and engage with the water



Protect

Use dredge material to create more park space and habitat areas to buffer critical infrastructure



Program

Provide a diversity of water-based recreation opportunities (fishing, wading, watersports, etc.)



Protect

Enhance & create new wetland areas and coves that protect infrastructure & provide new habitat space



Connect

Create new greenway connections from the lakefront to the adjacent communities



Top-Rated Goals

THE COVE



THE LAWN



THE BOARDWALK



CULTURAL TRAIL



GREENWAYS



THE SHORE



THE ISLAND



HABITAT TRAIL



LAKE ERIE

CLEVELAND METROPARKS
LAKEFRONT RESERVATION

E. 55TH
MARINA

SHORELINE
APARTMENTS

GIDDINGS
HABITAT
SHORE

E. 55TH STREET

FLEXIBLE
EVENT
SPACE

NEW PEDESTRIAN
BRIDGE & GATEWAY

THE COVE

THE LAKESHORE

LAKESHORE DRIVE

E. 72ND STREET

SOUTH
GORDON
PARK

INTERCITY

DOAN HABITAT
SHORE

E. 72ND
GATEWAY

ENHANCED
PEDESTRIAN
BRIDGE

E. 72ND GREENWAY

PICNIC GROVE
LAWN

THE EASTERN
FISHING COVE
LAWN

PICNIC PAVILION
E. 55TH FISHING

VIEWING PAVILION

BOARDWALK
TRAIL

THE SHORE
& LAUNCH

NATURE PLAY

THE HABITAT
LOOP

PICNIC GROVE

NEW PEDESTRIAN
BRIDGE & GATEWAY

E. 72ND STREET

E. 72ND GREENWAY

MULTI-USE TRAIL
NATURE PLAY

OVERLOOK

NATURE TRAIL

E. 72ND STREET

E. 72ND GREENWAY

E. 72ND GATEWAY

E. 72ND STREET

E. 72ND GREENWAY

E. 72ND GATEWAY

E. 72ND STREET

E. 72ND GREENWAY

E. 72ND STREET

E. 72ND GREENWAY

E. 72ND STREET

E. 72ND GREENWAY

E. 72ND STREET

E. 72ND GREENWAY

E. 72ND STREET

E. 72ND GREENWAY

E. 72ND STREET

E. 72ND GREENWAY

Top-Rated Projects

City-wide

- + Stores up to 3m CY of dredge material (over 15-20 years)
- + Protects and improves safety along I-90 and other essential infrastructure
- + Equity in recreation amenities
- + Tourism

Nature

- + New natural areas
- + Aquatic restoration / water quality
- + Habitat restoration (in-water and nearshore)
- + 6,000+ LF of softened shoreline
- + Connected green corridors

Access

- + Diversity of trail experiences (multi-use, nature, boardwalks)
- + Strengthened neighborhood street connections and access points
- + Connects to existing trails

Community

- + Places to engage with water
- + New passive recreation space that build on what people already love (fishing, picnic)
- + Unites existing park spaces along the shore
- + A go-to destination for the east
- + Playspaces / Intergenerational



LAKE ERIE



CLEVELAND METROPARKS
LAKEFRONT RESERVATION

THE COVE

THE ISLE

THE LAKESHORE

INTERCITY
YACHT CLUB

CLEVELAND LAKEFRONT
NATURE PRESERVE

NORTH
GORDON PARK

SOUTH
GORDON PARK

GIDDINGS
HABITAT
SHORE

E. 55TH MARINA

LAKESHORE DRIVE

I-90

E. 72ND GATEWAY

55TH STREET
GATEWAY

NEW PEDESTRIAN
BRIDGE & GATEWAY

E. 72ND GREENWAY

E. 55TH GREENWAY

E. 72ND STREET

ENHANCED
PEDESTRIAN
BRIDGE

MLK JR. DRIVE

0 300 600

THE SYSTEMS

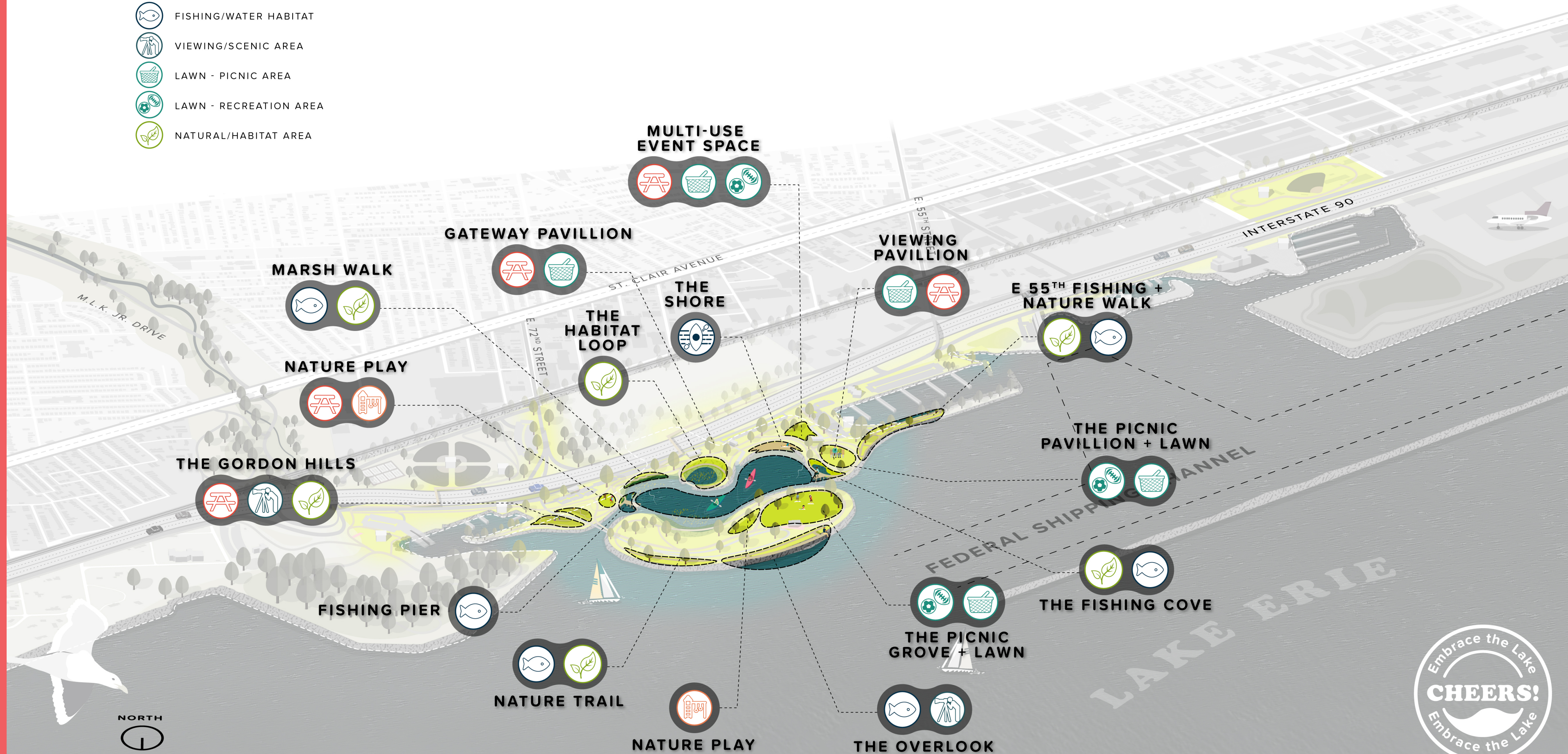


CLEVELAND
LAKEFRONT NATURE
PRESERVE








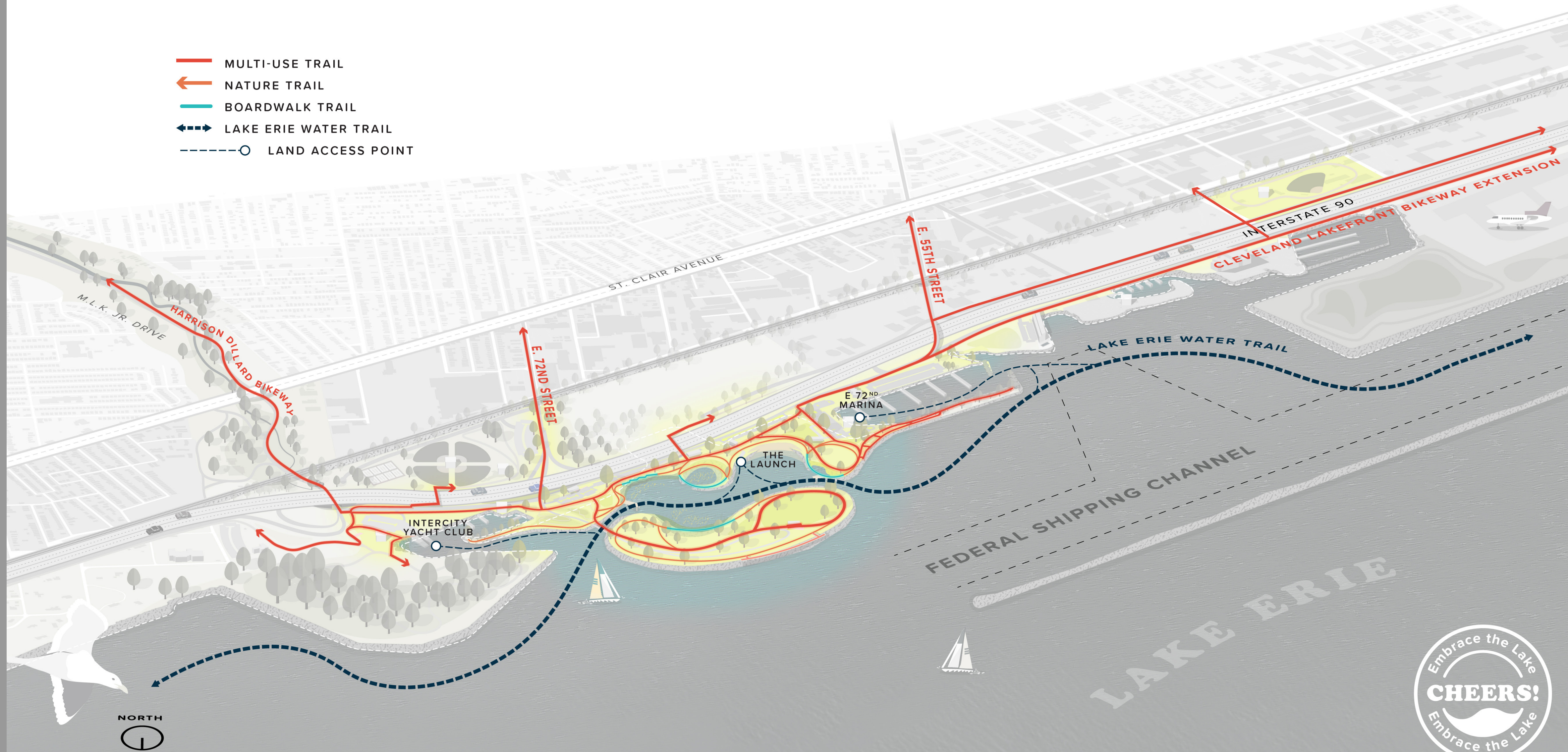
COMMUNITY SPACES

-  VISITOR AMENITIES (CONCESSIONS, RESTROOMS, ETC.)
-  PLAY AREAS
-  WATER RECREATION
-  FISHING/WATER HABITAT
-  VIEWING/SCENIC AREA
-  LAWN - PICNIC AREA
-  LAWN - RECREATION AREA
-  NATURAL/HABITAT AREA




MOBILITY - TRAILS

-  MULTI-USE TRAIL
-  NATURE TRAIL
-  BOARDWALK TRAIL
-  LAKE ERIE WATER TRAIL
-  LAND ACCESS POINT



MOBILITY - VEHICULAR

-  VEHICULAR CIRCULATION
-  RTA BUS ROUTE 39
-  PARKING







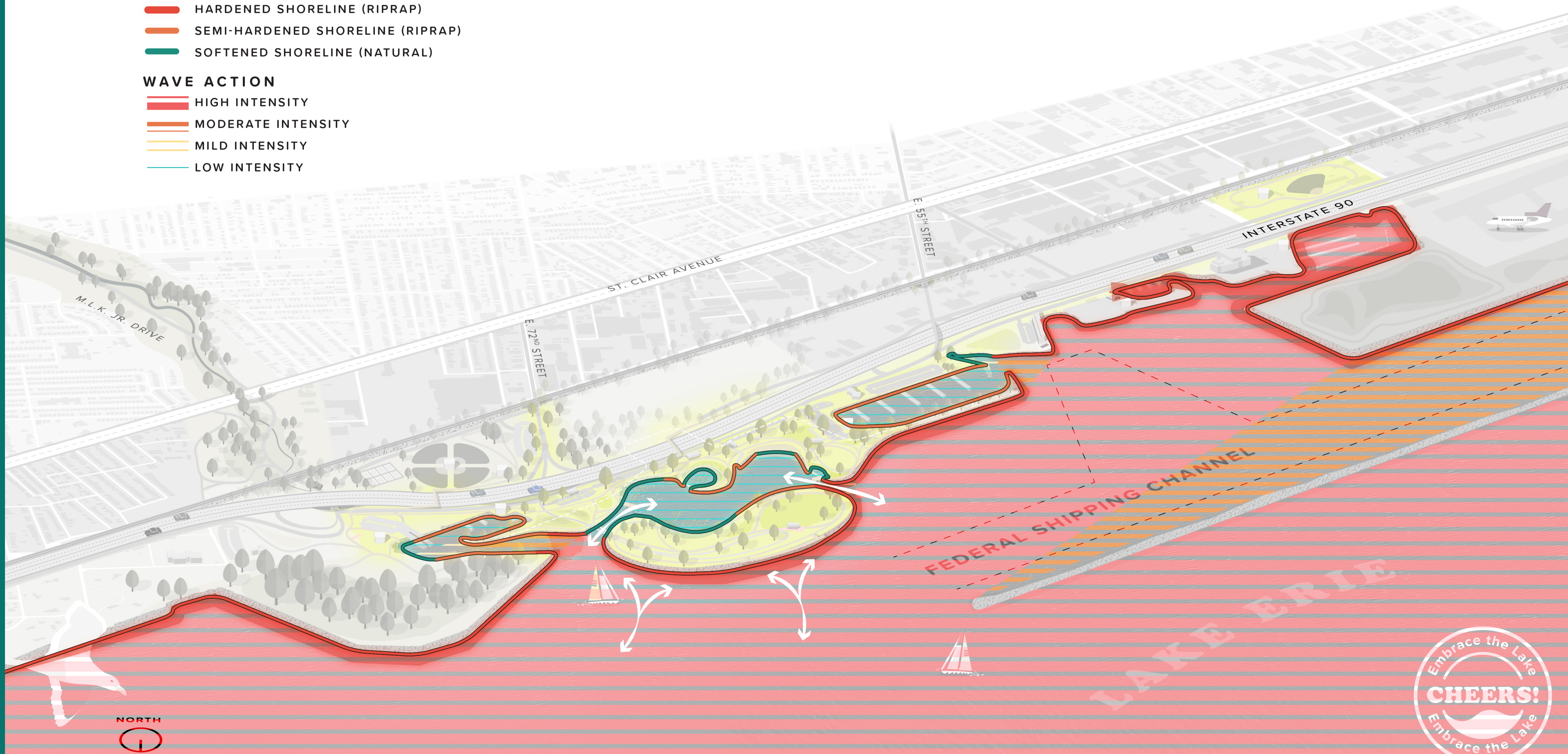
WATER & PROTECTION

SHORE CONDITIONS


-  HARDENED SHORELINE (RIPRAP)
-  SEMI-HARDENED SHORELINE (RIPRAP)
-  SOFTENED SHORELINE (NATURAL)

WAVE ACTION

-  HIGH INTENSITY
-  MODERATE INTENSITY
-  MILD INTENSITY
-  LOW INTENSITY



NATURE & HABITAT

-  SUBMERGED HABITAT
-  SHORE HABITAT



EXPERIENCES



EXPERIENCES



THE ISLE

EXPERIENCES



THE COVE

EXPERIENCES



THE SHORE & LAUNCH

EXPERIENCES



THE HABITAT LOOP



EXPERIENCES



summer: the airshow!



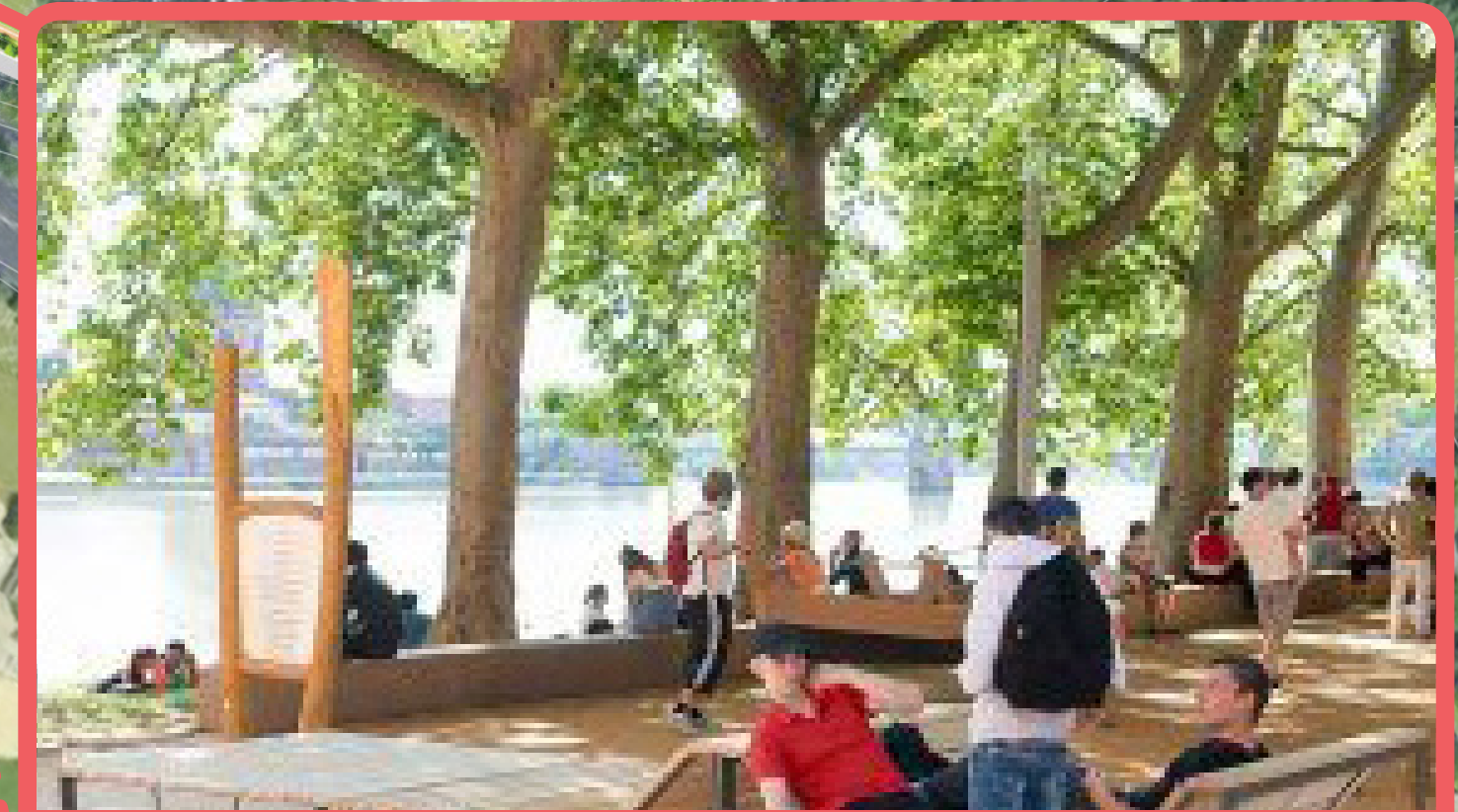
THE GORDON HILLS

EXPERIENCES



THE EASTERN FISHING COVE

EXPERIENCES



72ND STREET GATEWAY

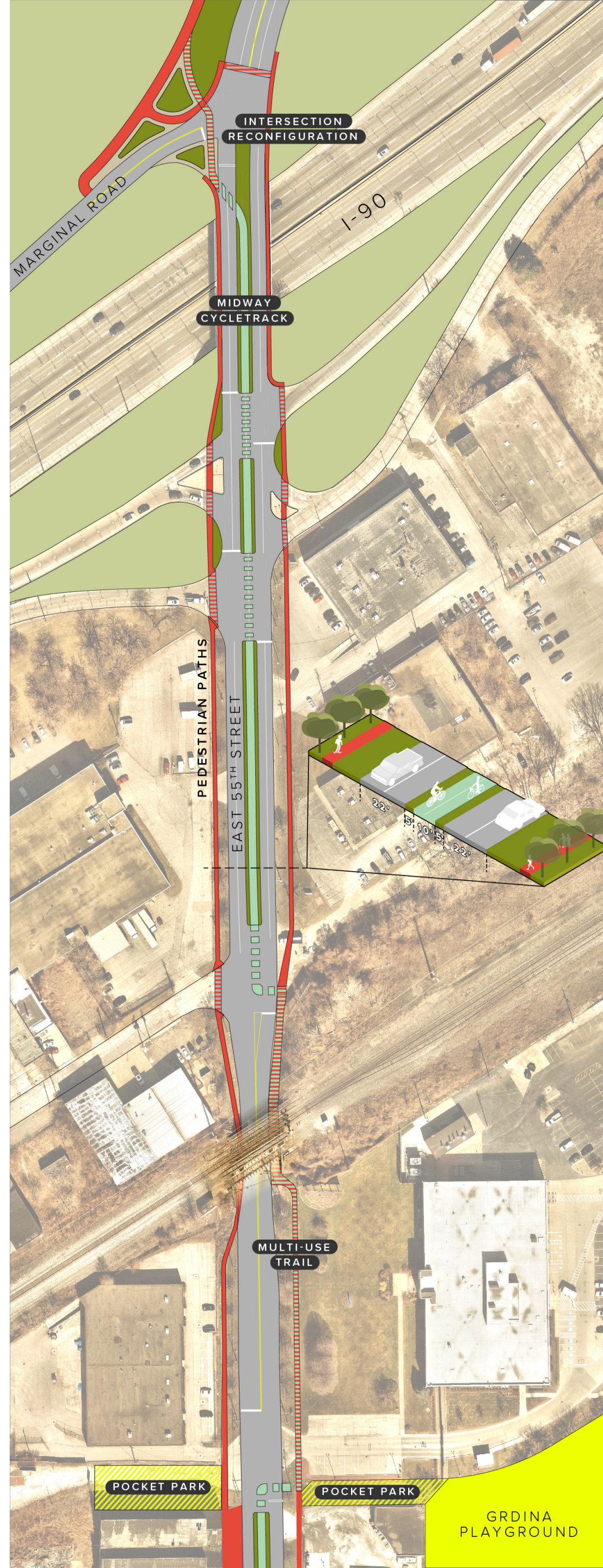
EXPERIENCES



COMMUNITY GREENWAYS

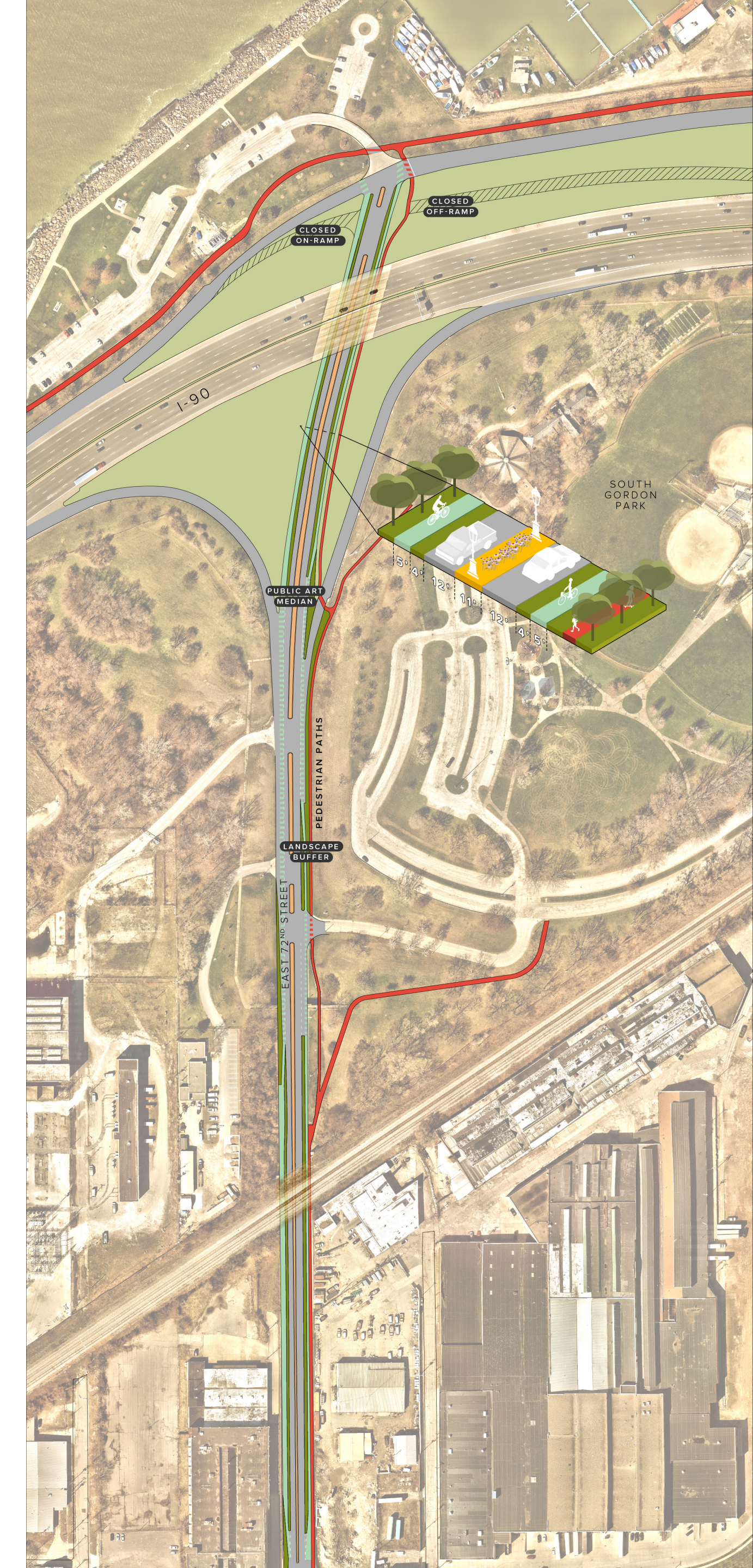
E 55th

- + mid-way cycle track
- + multi-use trail
- + connections to pocket parks & existing parks
- + simplified intersections @ Marginal

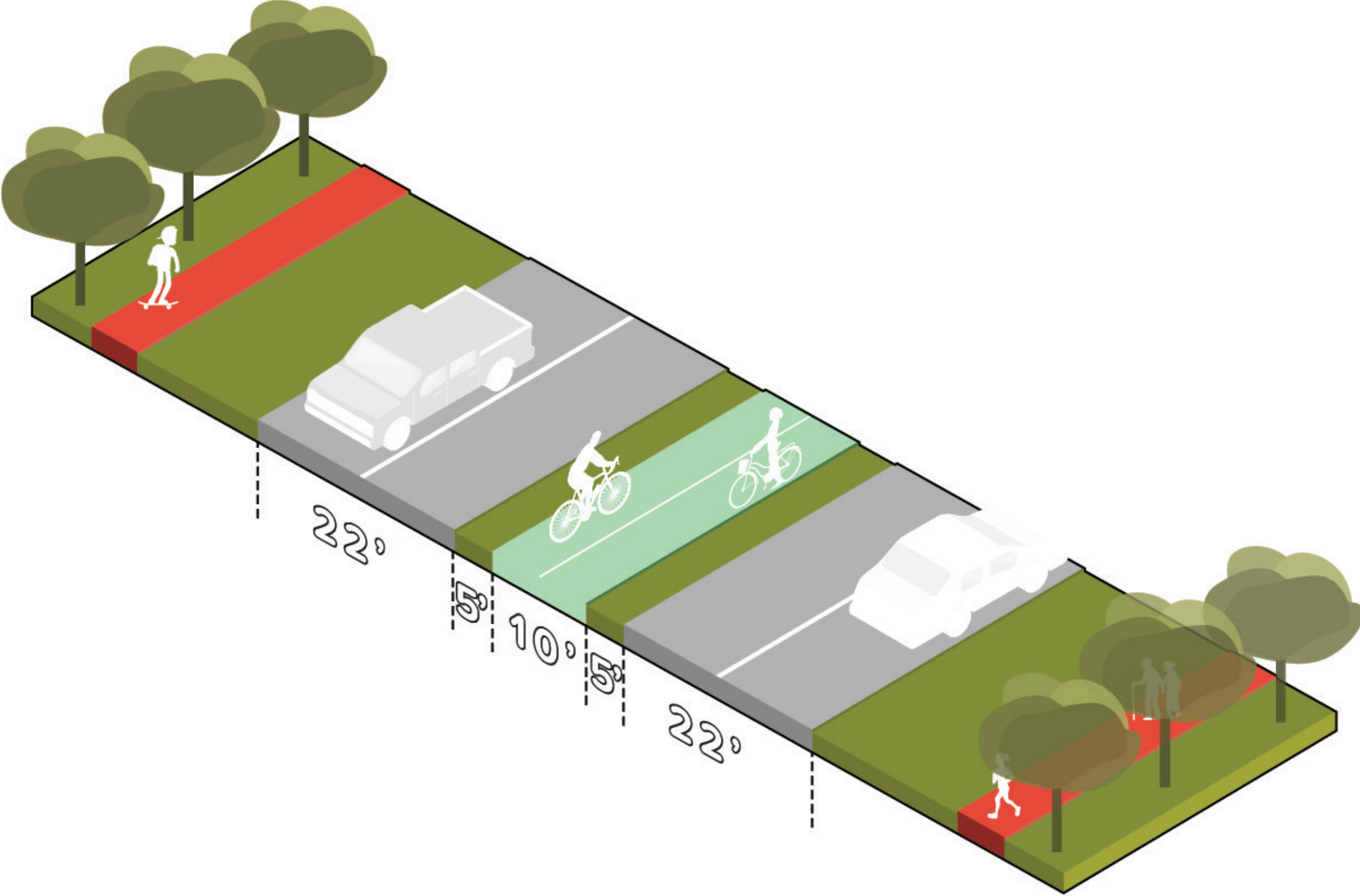


E 72nd

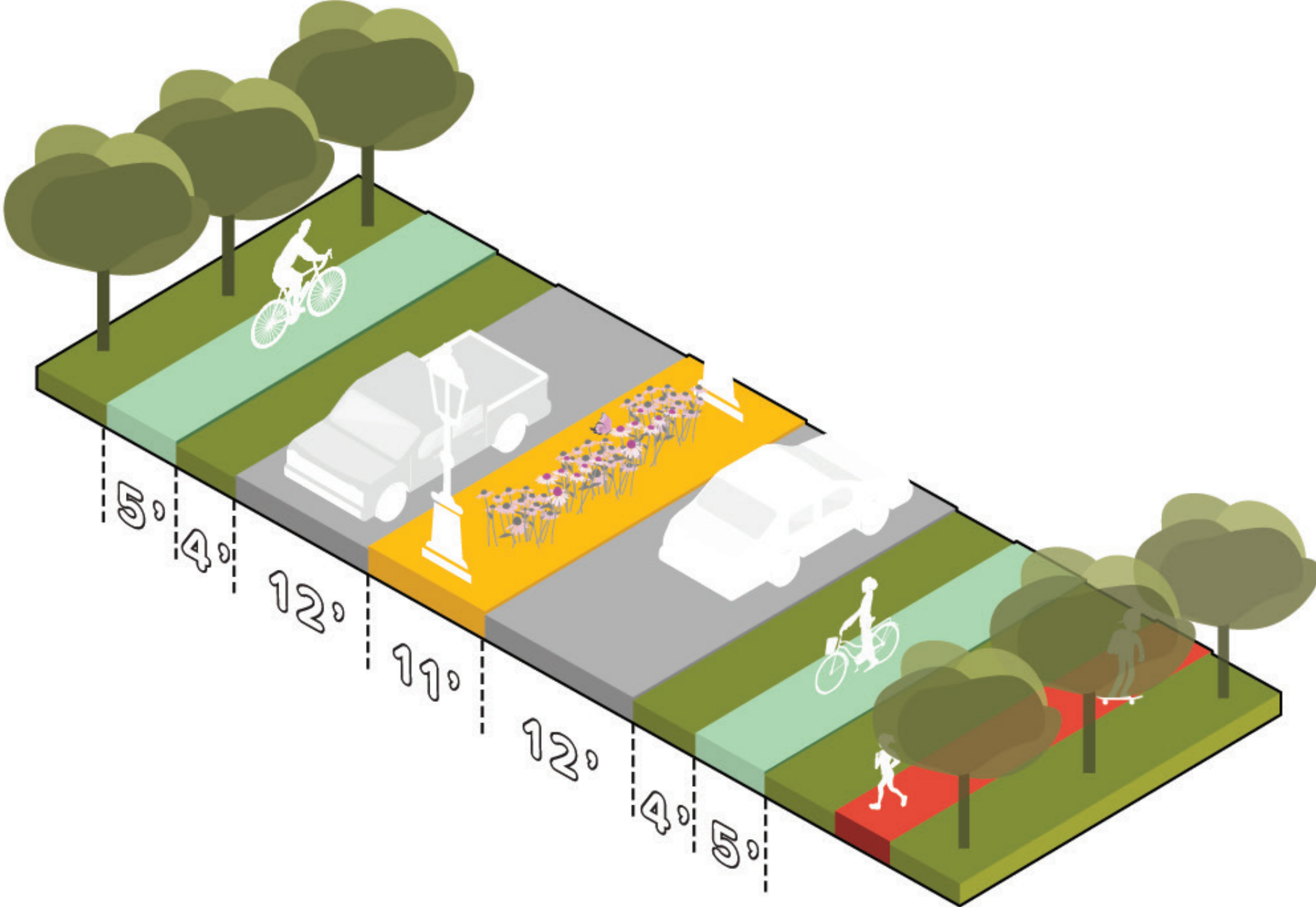
- + enhanced gateways with art & signage
- + greened bicycle lane buffers
- + simplified lakeside connection with reduced on/off ramps



E 55th



E 72nd



Implementation & Phasing

OVERALL PROJECT
AREA = 150 ACRES



PHASE 2: THE ISLE
36 ACRES

PHASE 1: SHORELINE
43 ACRES



OVERALL PROJECT
AREA = 150 ACRES

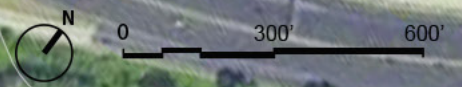


LAKE ERIE



THE HABITAT LOOP
PHASE 1A = ~\$12-15M

preliminary application pending
hope to be invited to submit



Coalition Building & Next Steps

Lakefront Updates!

- + Continue to welcome neighbors and all visitors to the Lakefront with clean & safe parks while observing COVID-19 best practices
- + New comfort station at E 72nd is opening May 1st!
- + Summer 2021 - State designation of the Lake Erie Water Trail in Cuyahoga County promoting paddler access to the lake



check it out!



Kelly Coffman, Park Planner, CHEERS PM
Cleveland Metroparks
kbc@clevelandmetroparks.com

Ongoing Engagement

- + Project updates, information, and comment form at www.clevelandmetroparks.com/CHEERS
- + Continued engagement with adjacent neighborhoods, stakeholders, residents of the region, non-profits and foundations, and local, state, and federal agencies
- + Maintain the ongoing CHEERS partnership and identify additional project funding and support:
 - Current five partners
 - Black Environmental Leaders
 - National Fish and Wildlife Foundation (NFWF)
 - Other Stakeholders
 - US Army Corps of Engineers



**JOIN US
FOR A WALK
ALONG
LAKE ERIE!**

**EMBRACE THE LAKE
WALKSHOPS APRIL
24TH & 25TH.**



BLACK ENVIRONMENTAL LEADERS

MISSION:

Black Environmental Leaders Association (BEL) stands as stewards of the natural and built environment through collaboration and partnership, to raise awareness and advocate for environmental and economic justice.

VISION:

We work collectively to provide a forum for community environmental education which can serve as the basis of a deeper understanding and commitment to land, water, air, transportation and energy issues that impact our economic bottom line, through the lens of health, diversity, inclusion and equity.

SeMia Bray

Black Environmental Leaders (BEL)

www.be-leaders.org

famicos FOUNDATION

MISSION:

Our mission is to improve the quality of life in greater Cleveland through neighborhood revitalization, affordable housing, and integrative social services.

Neighbor Nights is a **free** monthly event celebrating our neighborhood! Working together, we will create a platform for ongoing conversation and collaboration, connecting residents and organizations through creative activities with the goal of strengthening (& igniting!) our community one event at a time.

How to get involved

- **Programming Partner:** Bring your hands-on intergenerational activity and information about your work in the community + ways folks can get involved with you!
- **Monthly or Seasonal Sponsor:** Your contribution can underwrite a single event, or help our whole season take flight with benefits including print, digital, and on-site visibility.
- **Volunteer:** Join our dozens of creatives who are making a difference each month.
- **Join us:** At one or all of our 2021 Neighbor Nights!

April 15	Sweet Street	Community Space & Visual Art
May 20	Feelin' Fresh	Farmers' Market & Food Security
June 17	Move n' Groove	Healthy Play
July 15	Power of Words	Storytelling, Social Justice & Cultural Power
August 19	Dialed In	Digital Equity & Connectivity
October 21	Sparkle n' Scare	Community Clean Up & Reverse Trick-or-Treat
November 18	Community Toast	Marshmallow Roast & Shared Space Celebration

*September is IngenuityFest month! Stay tuned for announcements & updates!

Ignite! Neighbor Nights is a program of Ingenuity Cleveland in proud partnership with Famicos Foundation.

Questions? Email: programming@ingenuitycleveland.org
Or Call: (216) 589-9444

Charlie Townsend
Business & Community Engagement
Manager, Famicos Foundation



**Upcoming
engagement
opportunities!**



**Details and survey @
BikeCleveland.org/SRTP**

- + Neighborhood engagement focused on access and removal of barriers from Superior Ave, E. 55th, and E. 72nd to the Lakefront Parks
- + Builds off CHEERS Study
- + Working in partnership with St. Clair Superior Development Corporation, Cleveland Metroparks, and Cleveland Kent State Urban Design Collaborative
- + Final Action Plan September 2021

BICYCLE RODEO

Caregivers and kids are invited to try out some fun and challenging bike activities, learn "quick fix" tips, and more

When: May 12th from 4-6pm
Where: Wilson School
1126 Ansel Rd, Cleveland

****Face masks required****

For more details visit BikeCleveland.org/SRTP



COMMUNITY BIKE RIDE

Caregivers and kids are invited to come join for a neighborhood bike ride and share ideas on better connecting the St. Clair Superior Neighborhood to the Lakefront Parks.

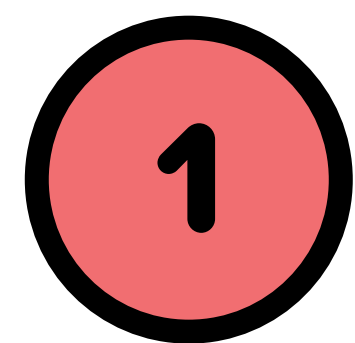
When: May 15th from 10am-12pm
*We'll leave in groups of 10 every 20 minutes
Where: Wilson School
1126 Ansel Rd, Cleveland

Free minor bike repair will be available on-site!
****Face masks required****

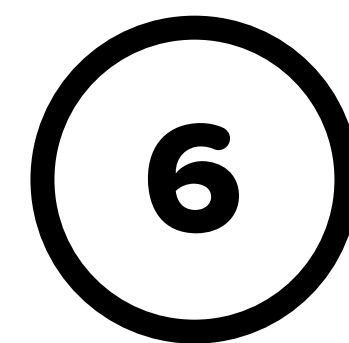
Jacob VanSickle, executive director
Bike Cleveland
www.bikecleveland.org

Q&A

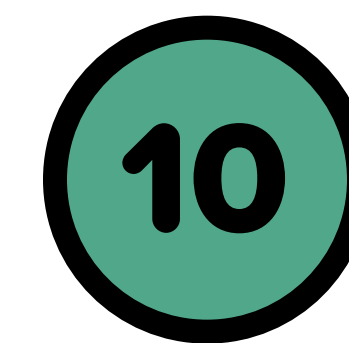
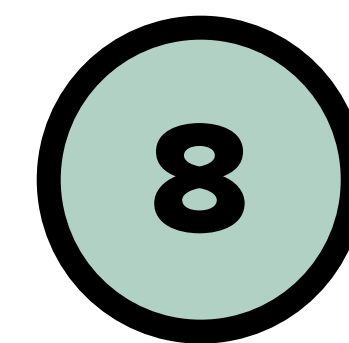
On a scale of 1-10, how well do you think the plan responds to the needs of the community (e.g., gathering spaces, places to touch the water, more visitor amenities, better connections, etc.)



not at all

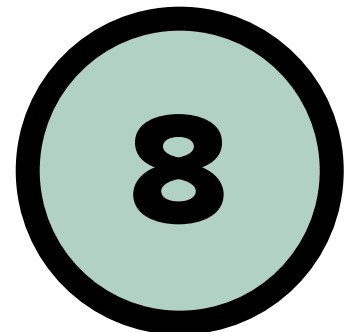
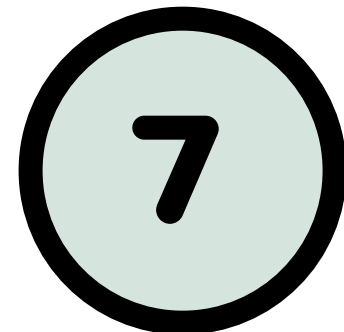
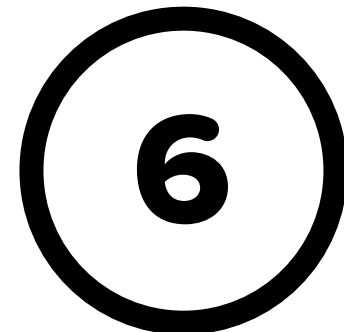


neutral



very well

On a scale of 1-10, how well do you think the plan responds to the needs of the environment (e.g., more habitat spaces, new ecotypes, improved water quality, better protection from storm/wave events, etc.)



not at all

neutral

very well

Where should we start? Tell us what you think would be the most impactful early action projects!

Stay engaged!

PROVIDE FEEDBACK ON THE PLAN

ClevelandMetroparks.com/CHEERS

fill out the comment form or survey

or

Send us an email:

CHEERS@ClevelandMetroparks.com

Call and leave a voicemail:

440-331-8593

Embrace the Lake Walkshops!

- + 3 days, 4 tour routes
- + Socially-distanced & masked walks
- + Community Partners will be leading some sessions
- + Feedback on short-term improvements & the draft plan!

**JOIN US
FOR A WALK
ALONG
LAKE ERIE!**

**EMBRACE THE LAKE
WALKSHOPS APRIL
24TH & 25TH.**

