

## Overview

# Natural Resource Management Approach & Plan

*Jennifer Grieser*

*Director of Natural Resources*



# Natural Resources Mission



Enhance the ecological integrity of Cleveland Metroparks natural resources through adaptive ecosystem management based on sound, applied research.

# Natural Resource Management Approach & Plan

- Align with 2020 Strategic Plan
- Guiding principles
- Natural Resource snapshots
- Stewardship strategy
- Project planning & prioritization

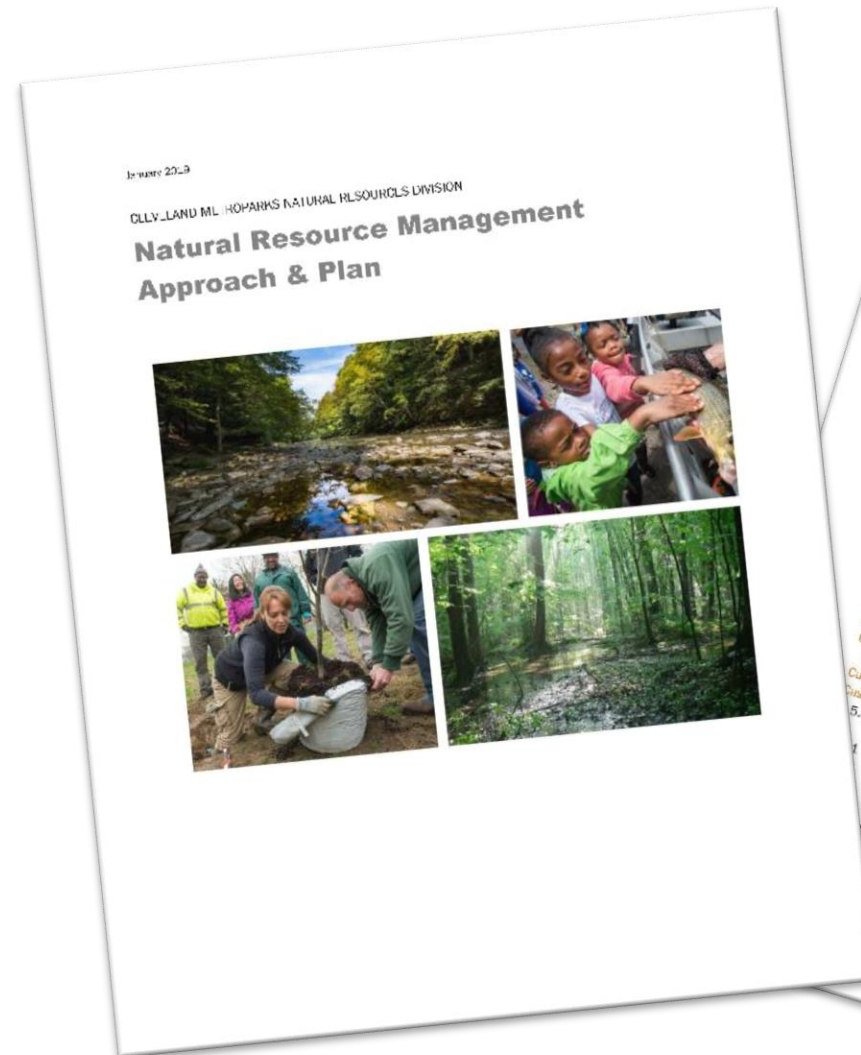


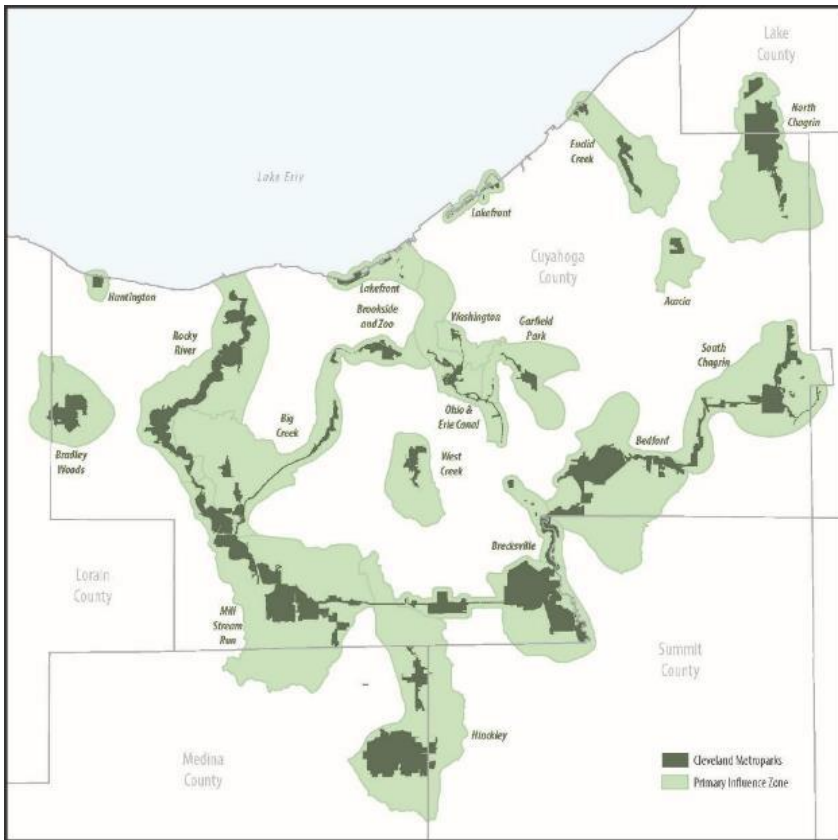
Table of Contents	
1	Introduction
2	Cleveland Metroparks At a Glance
2.1	Guiding Principles
2.2	Lasting Stewardship
2.3	Scale and Connectivity
3	Adaptive Management
3.1	State of the Natural Resources
3.2	Geology, Climate, and Regional Context
3.3	Water Resources
3.4	Plant Communities
4	Partnerships
4.1	Understanding Plant Communities: What is PCAPP?
4.2	Natural Resource Threats and Stressors
4.3	Fragmentation and Land Use Change
4.4	Invasive Species
4.5	Stormwater
5	Wildlife Conflicts
5.1	Climate Change
5.2	Strategic Stewardship
5.3	Conservation Stewardship
5.4	Resource Management
5.5	Case Study 6: Cooperative Management for a Threatened Species: Wandering Turtles
5.6	Case Study 7: Resource Management to Reconnect Oak at Brecksville
5.7	Case Study 8: Forest Restoration through Reconnection at Redwing
5.8	Case Study 9: Understanding System and Process
5.9	Case Study 10: Understanding Deer Browsing Impact - an Evolving Technology
6	Partnerships for Natural Resource Project Planning
6.1	Natural Resource Project Planning
6.2	Organizing Projects
6.3	Project Planning Framework
6.4	2016-17 Project Planning
6.5	A Living Document
6.6	Background Documents
6.7	Acronyms & Glossary
6.8	Appendix

# 2020 Strategic Plan Alignment



# Guiding Principles

- Lasting Stewardship
- Scale & Connectivity
- Adaptive Management

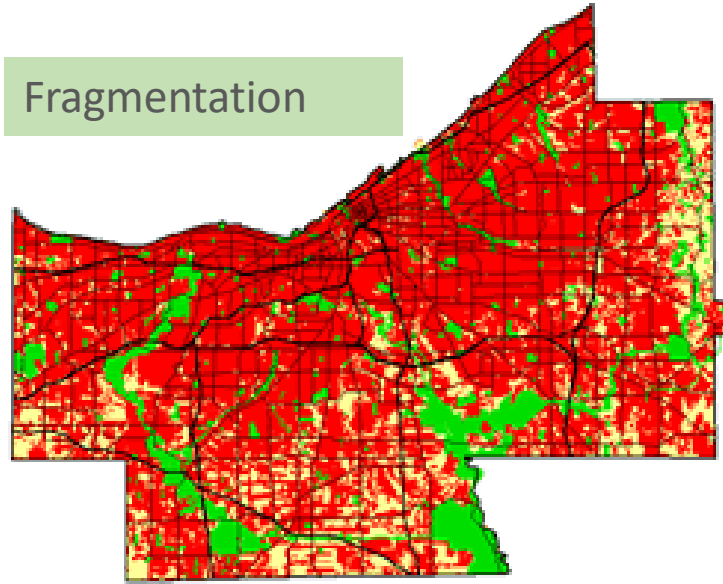


# Stressors



Invasive species

Fragmentation

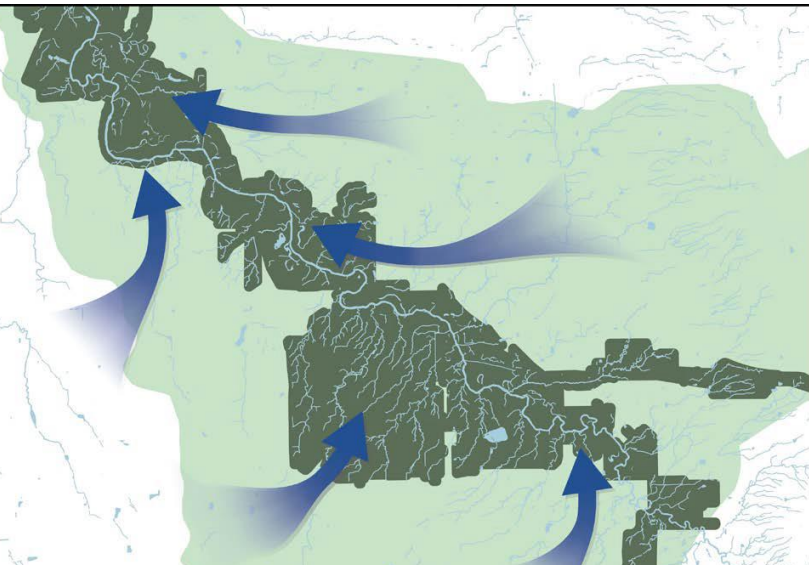


2011

New pests / pathogens



2016



Stormwater

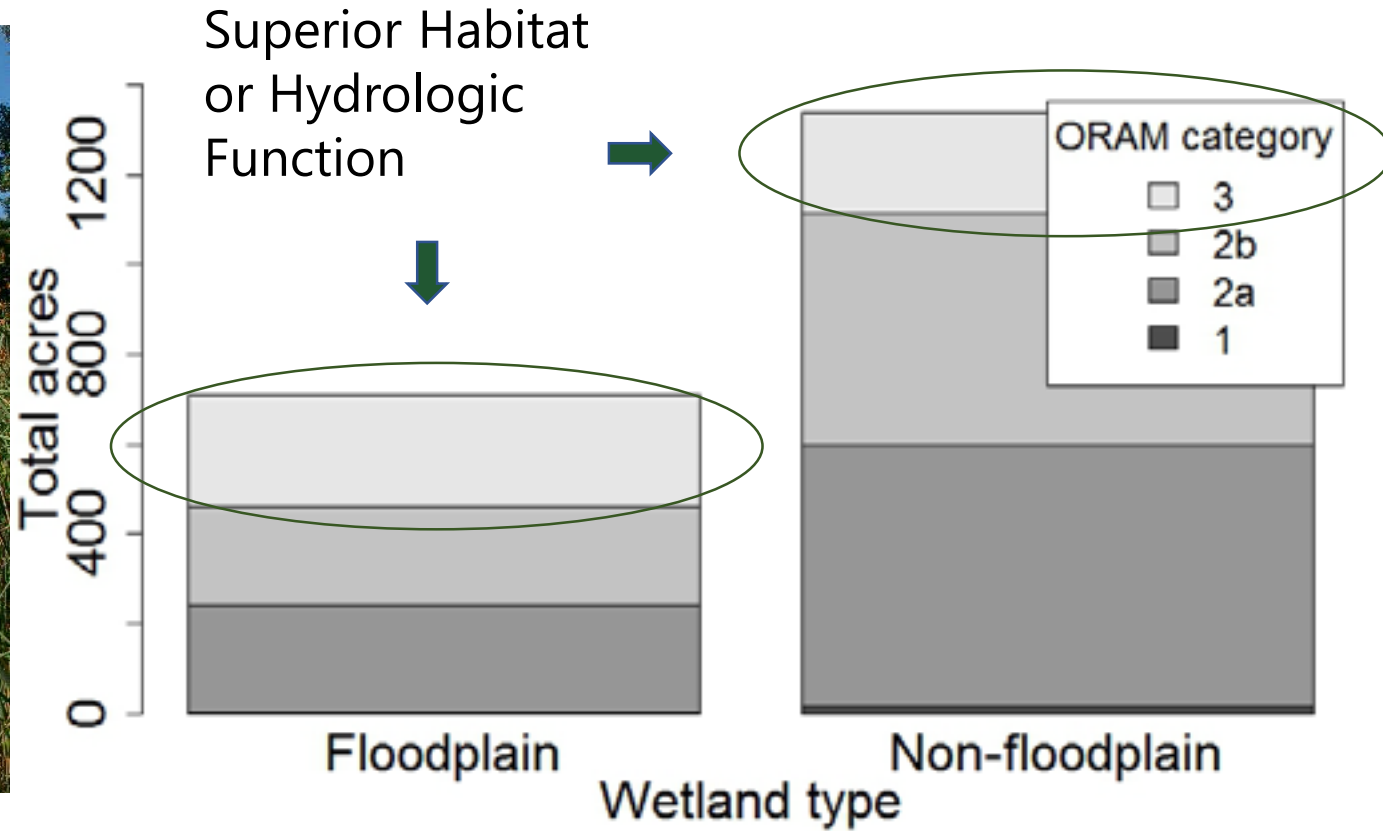


Urban wildlife

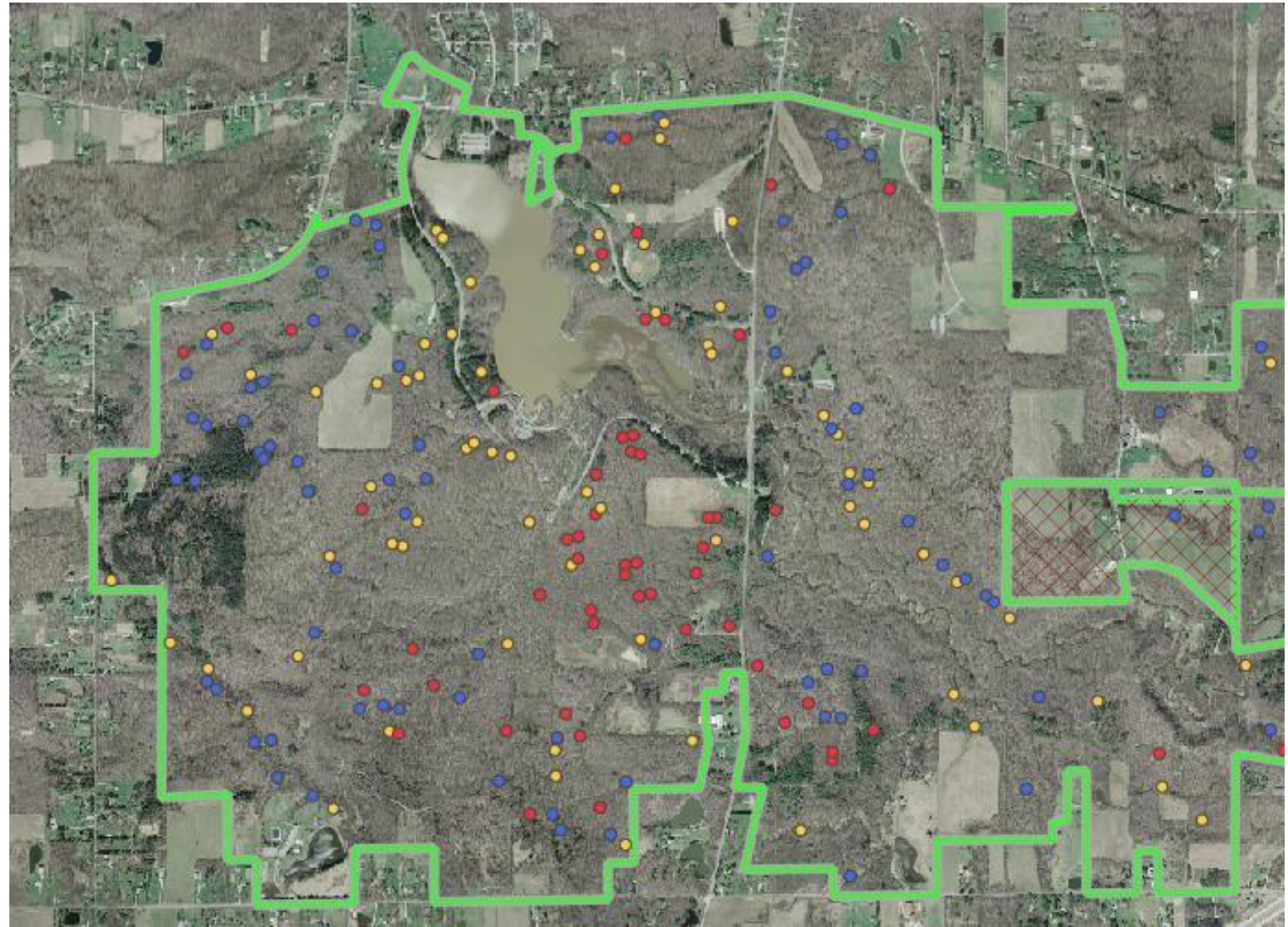
# Wetlands



3,200 distinct wetlands mapped



# Streams

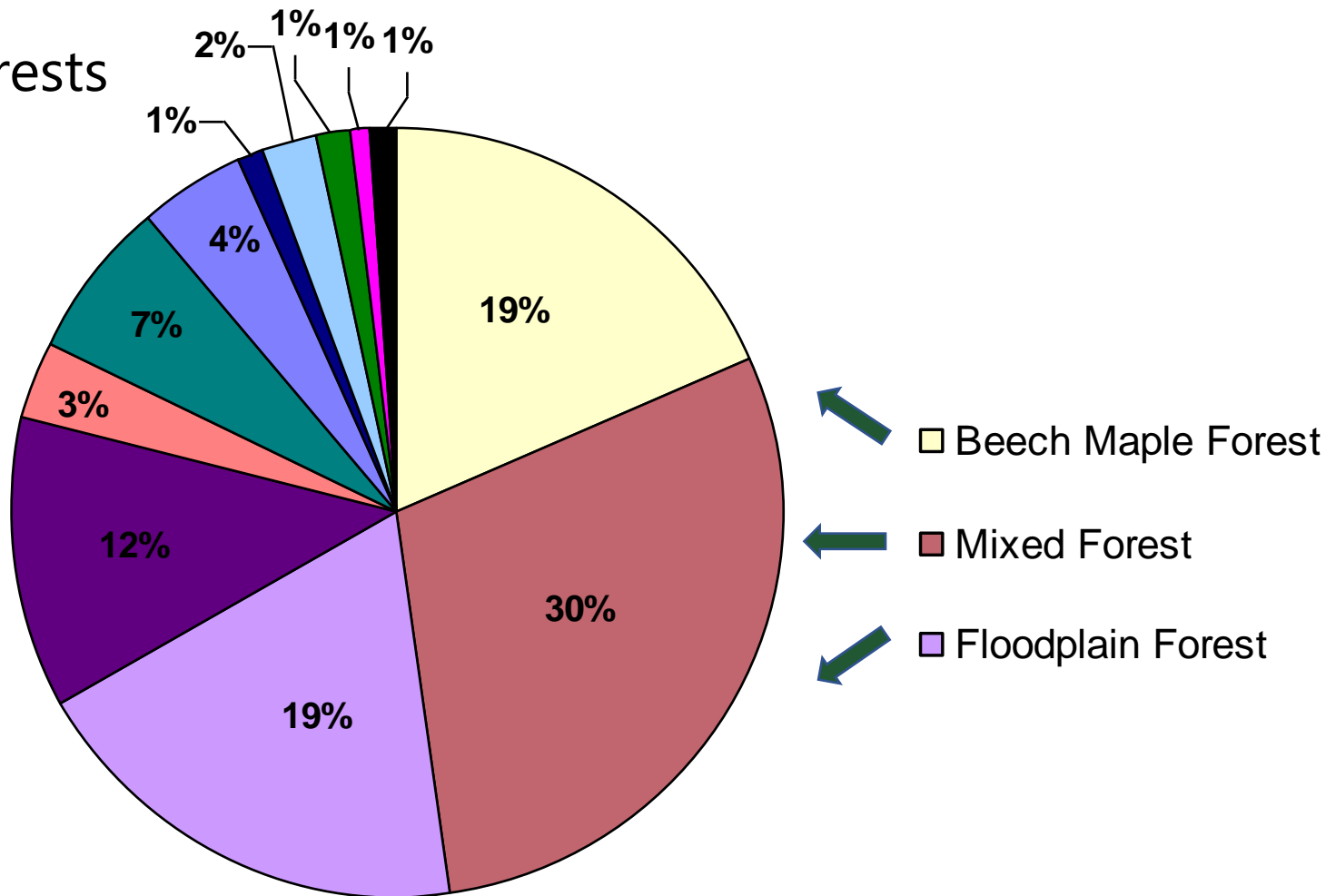


1,000+ primary headwaters surveyed



# Forests

77% of our acreage covered by forests



# Wildlife



# Insects & other Macroinvertebrates



137 insects & arthropods  
id'd in 1 day @ Roger's Rd  
meadow

# Rare Plants

80+ rare plants id'd since 2012

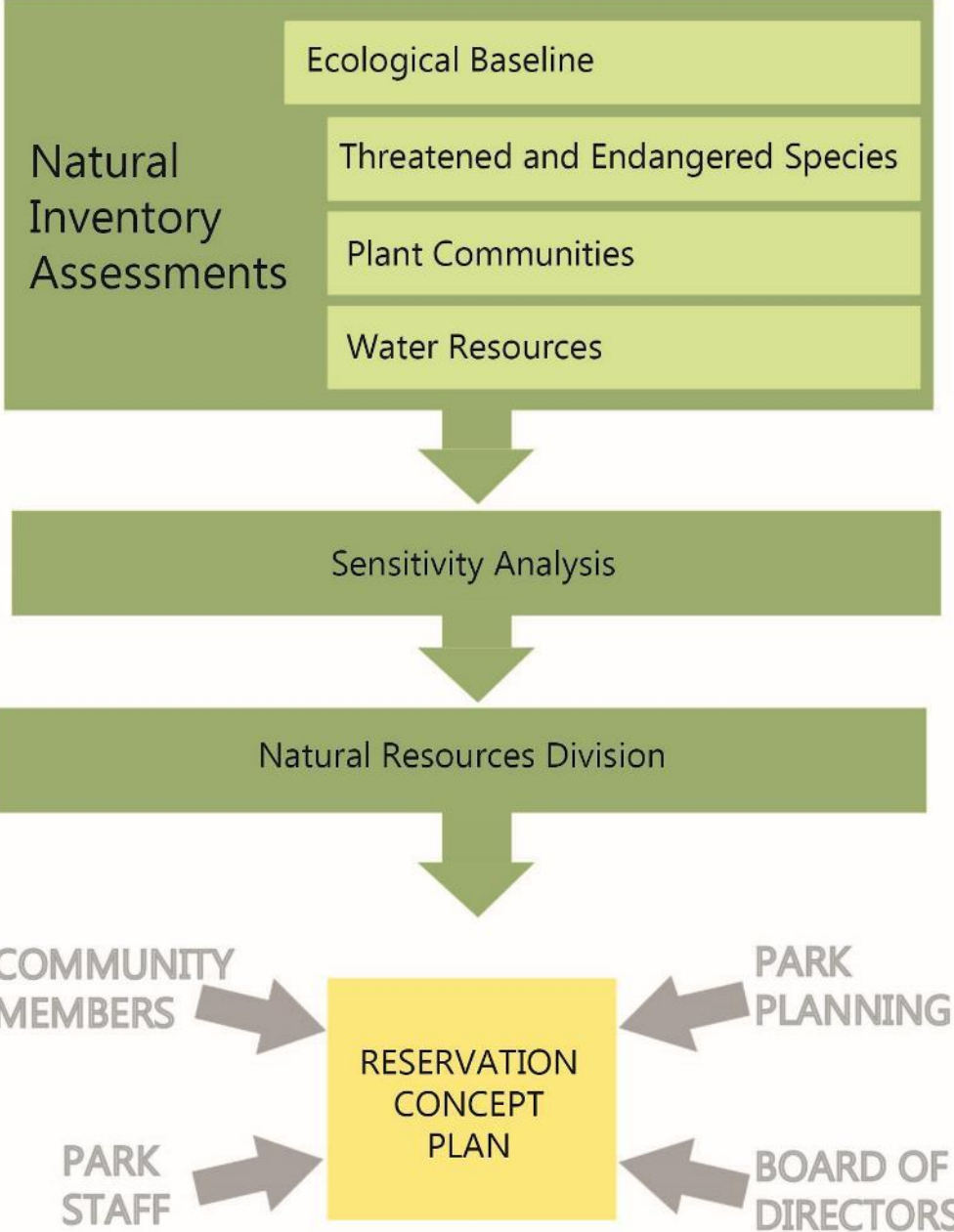


# Strategic Stewardship

- Conservation Stewardship



## ROLE OF NATURAL RESOURCE DIVISION IN PLANNING



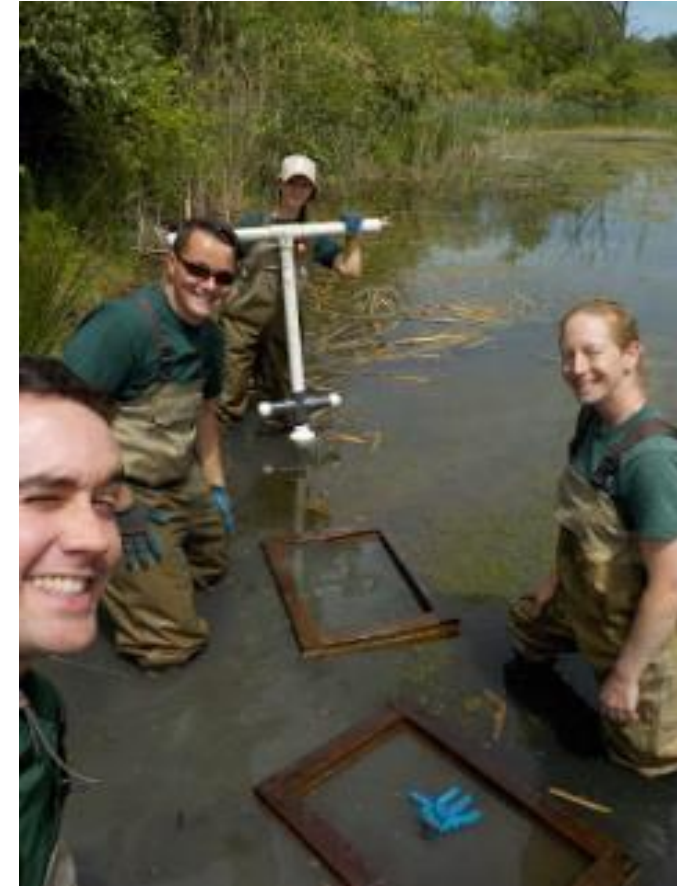
# Strategic Stewardship

- Promote Ecosystem Resilience



# Strategic Stewardship

- Understand Natural Systems



# Strategic Stewardship



- Partnerships





# Project Planning

- Prioritization
  - Ecological Sensitivity
  - Urgency
  - Funding Opportunities
  - Partnerships
  - Feasibility
  - Strategic Goal Alignment

Table 9. Results of Natural Resource Division's 2016 Project Planning by Score

Project Locations/Activity	Ecological Sensitivity	Urgency	Funding	Partnerships	Feasibility	Strategic Goals	Project Score
Sunset Pond and Sanctuary Marsh Hydrilla control NORTH CHAGRIN	3	4	4	2	Y	Y	20
Pollinator habitat enhancement and connectivity, utility ROWs BEDFORD, ROCKY RIVER	4	3	2	3	Y	Y	19
Wallace Lake Hydrilla control MILL STREAM RUN	2	4	4	2	Y	Y	18
Blue Heron Marsh Hydrilla control OHIO & ERIE CANAL	2	4	4	2	Y	Y	18
Main Street Wetlands; protection, deer MILL STREAM RUN	4	3	2	1	?	Y	17
Bonnie Park dam remove/modification MILL STREAM RUN	3	3	3	2	Y	Y	17
Greathouse & Washout Wetlands Hydrilla control WEST CREEK	1	4	4	2	Y	Y	16
Former greens, tees and fairways; reforestation ACACIA	1	4	3	3	Y	Y	16
Euclid Creek headwaters; stream restoration ACACIA	1	4	3	3	Y	Y	16
East Branch Rocky River, Johnson Creek, Ledge Creek, Rising Valley, Mirror Valley; stormwater mitigation HINCKLEY	3	3	2	2	?	Y	16



# Example Projects





Thank you to Terry Robison, PhD & Pat Lorch, PhD for leading the development of this plan

Thanks to Kyle Lanzer for the majority of these photographs

Stay tuned for what's up next!