

# *Cleveland Metroparks*

Cultural Historic Assets:  
Stories Behind the Structures



# *The Usual Suspects*











*the hut Cleveland Metropark*











# “Gimme Shelter”

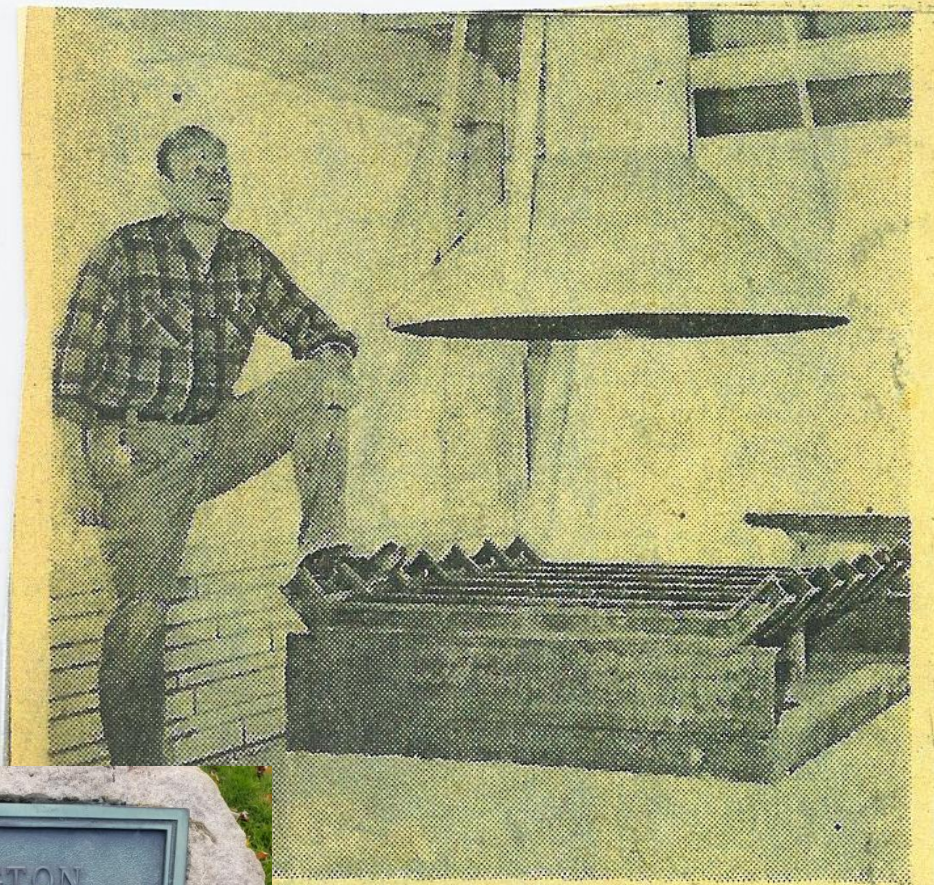






Euclid Creek - Welch Picnic area  
Shelter Hse. July 1940 Neg 944





**CODRINGTON  
SHELTER HOUSE**  
 NAMED FOR  
**GEORGE W. CODRINGTON**  
 1880 - 1951  
 OUTSTANDING CITIZEN  
 INDUSTRIAL LEADER  
 PUBLIC BENEFACTOR

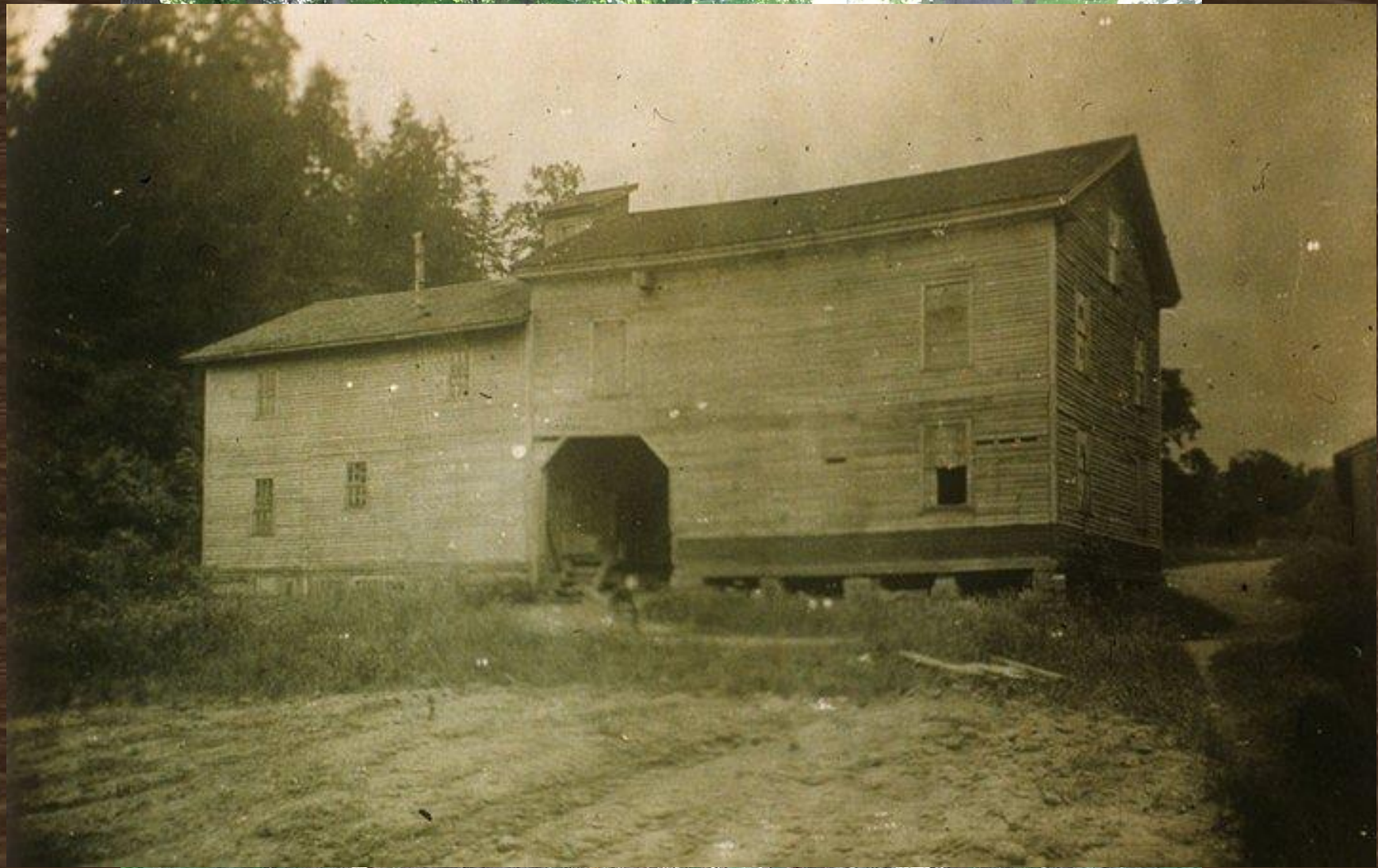
...ton, superintendent of Bradley  
 reservation, tests a grill for strength  
 w shelter house. Grill is made of  
 rack.

**Woods Abloom,  
 Ready for the Family**





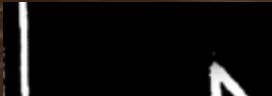














*“The more you know  
about the past, the better  
you are prepared for the  
future.”*

**Theodore Roosevelt**