



# TIME TO EXPLORE

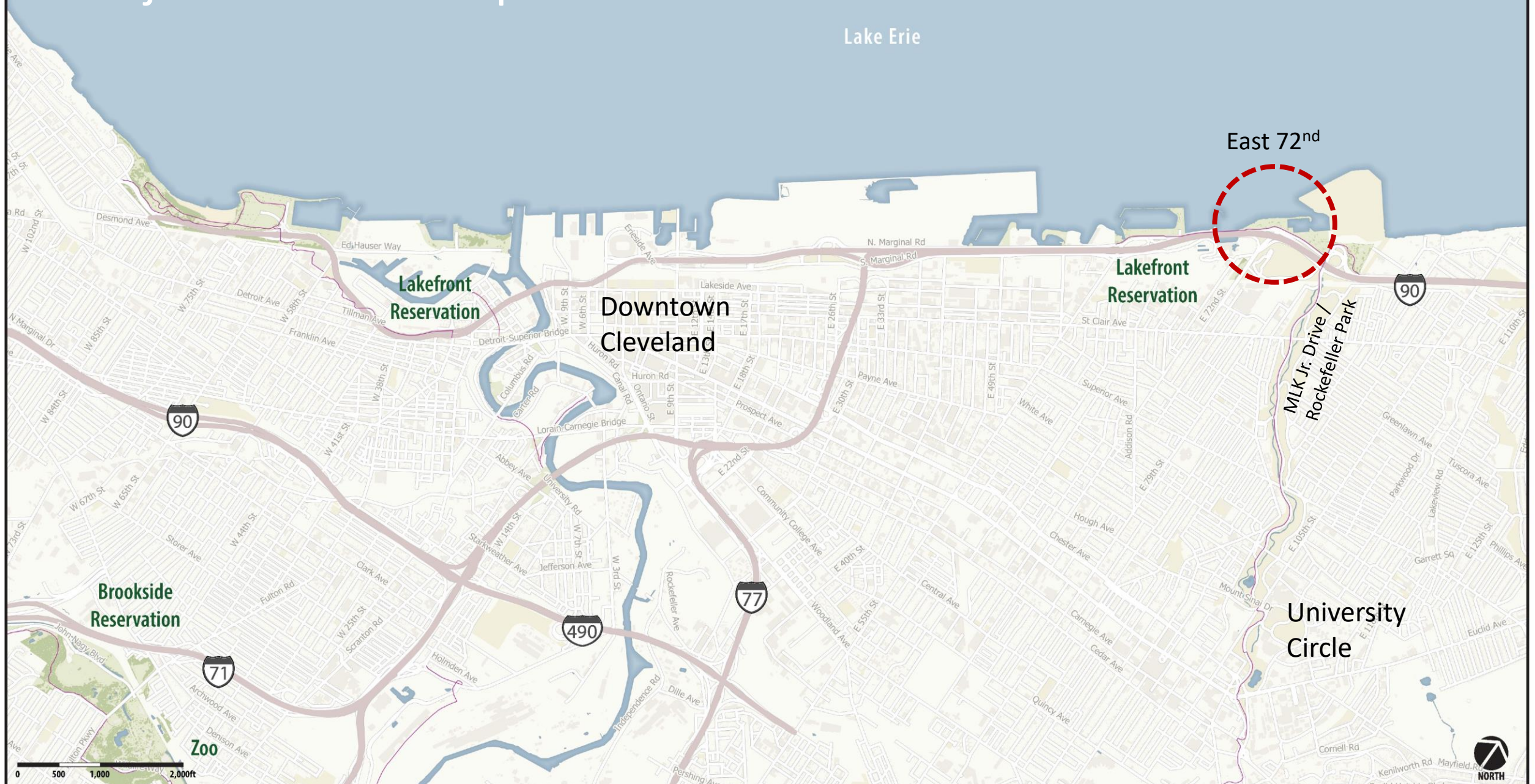
Cleveland Metroparks

## East 72<sup>nd</sup> Placemaking

Board of Park Commissioners

April 18, 2019

# Project Location Map



Lake Erie

East 72<sup>nd</sup>

Lakefront  
Reservation

Downtown  
Cleveland

Lakefront  
Reservation

MLK Jr. Drive /  
Rockefeller Park

Brookside  
Reservation

University  
Circle

Zoo

0 500 1,000 2,000ft



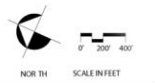
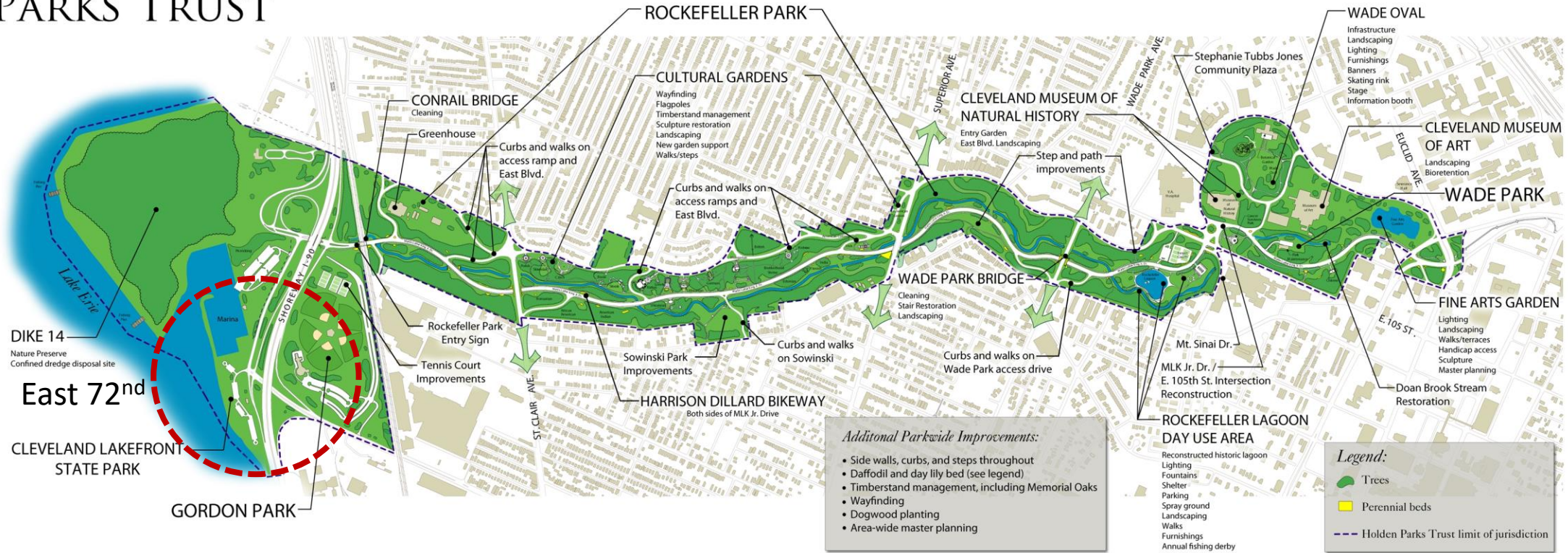
NORTH

# Holden Parks Trust Support Focus Area

## HOLDEN PARKS TRUST

Project History  
1987-2011

The Trust's investment of over \$5 million has helped leverage over **\$10 million in improvements.**



B E H N K E



Behnke Associates, Inc.  
1235 W. 39th St.  
Cleveland, Ohio 44115-1239  
216.585.9000 Fax: 216.585.8044 Fax  
www.behnke.com info@behnke.com Email

# Cleveland Metroparks East 72<sup>nd</sup> and Gordon Park

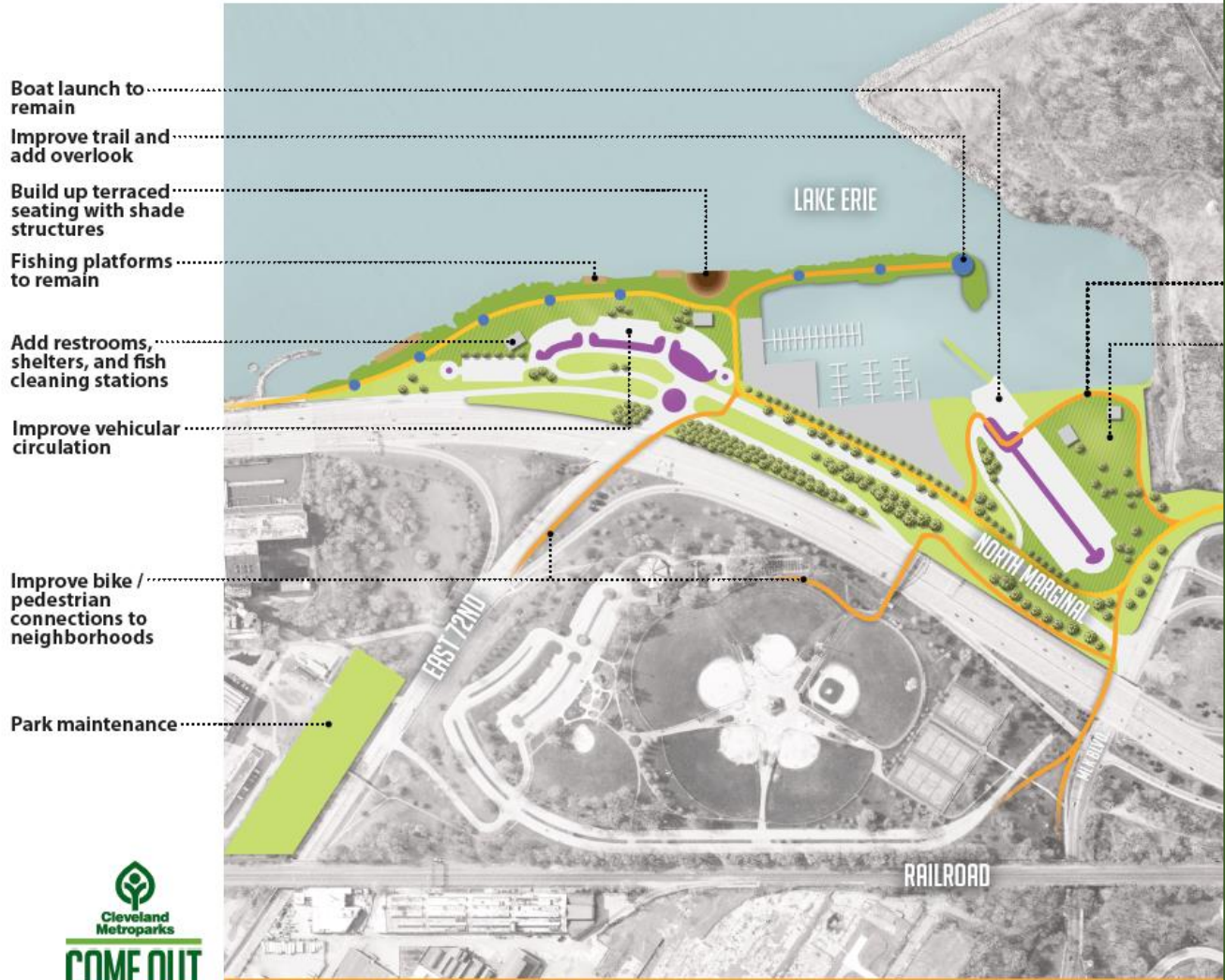


# East 72<sup>nd</sup> Current Conditions



# Reservation Master Plan

## LAKEFRONT RESERVATION MASTER PLAN - NORTH GORDON PARK



- Boat launch to remain
- Improve trail and add overlook
- Build up terraced seating with shade structures
- Fishing platforms to remain
- Add restrooms, shelters, and fish cleaning stations
- Improve vehicular circulation
- Improve bike / pedestrian connections to neighborhoods
- Park maintenance

### 2019 RESERVATION PLAN UPDATE PROCESS

Kick-off Meeting	Feb.
Initial Concept Plan	March
Refined Concept Plan	May
Leadership / Chiefs Review	July
Outside Stakeholder Meetings	July/Aug/Sept.
Draft to Board	August
Open Houses	September
Final Review	November
Final to Board	December



# General Concept Discussion

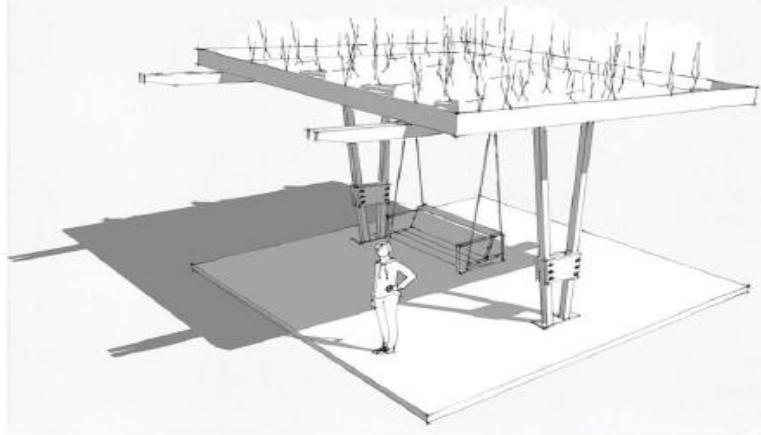


LF - E55 st.  
Not to Scale June 09, 2018

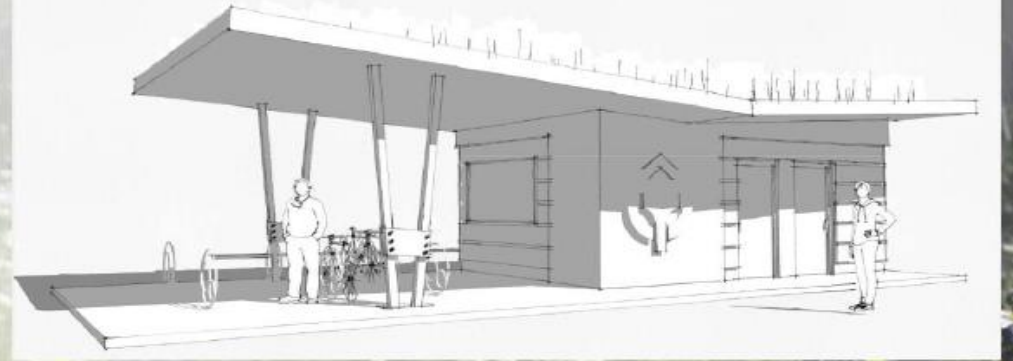
Bike Corral  
Lake Front Reservation



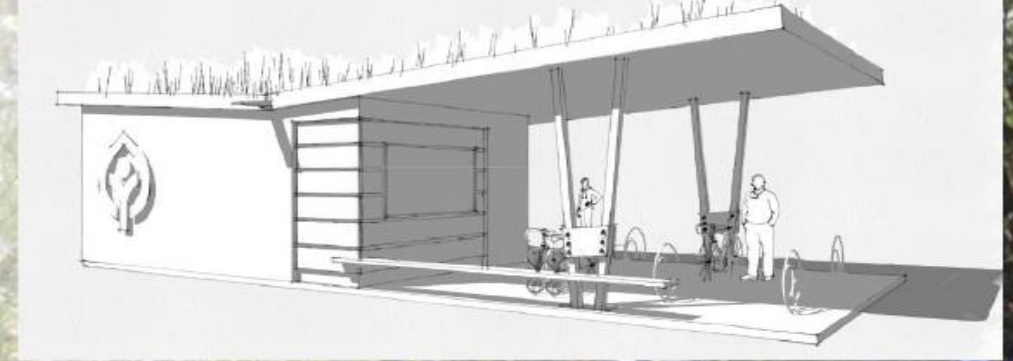
SWING SHELTER



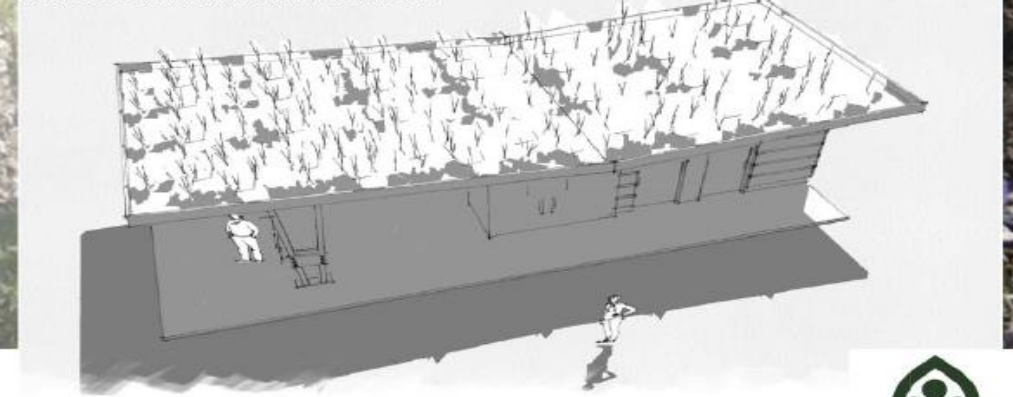
COMFORT STATION NORTH ELEVATION



COMFORT STATION SOUTH ELEVATION



COMFORT STATION BIODIVERSE ROOF



SITE PLAN



# Conceptual Renderings

Not to Scale February 13, 2019

# E. 72nd Comfort Station Lakefront Reservation





# E72nd Comfort Station Conceptual Rendering

## Design Features:

- 850 sq. ft. vegetative roof
- Stormwater runoff mitigation
- Automatic sensor faucets
- Waterless urinals
- High efficiency toilet system
- Tankless water heater
- Energy efficient lighting
- Recyclable rainscreen wall system



# Project Components and Cost

---

**RESTROOM** – A two-unit unisex ADA accessible flush bathroom with concrete block construction, wood accents, and a green roof of local native grasses and forbs

**TRAILHEAD FEATURE** – A covered concrete patio adjacent to the Cleveland Lakefront Bikeway and new restroom featuring benches, drinking fountains, maps, and bike racks to serve as a trailhead

**SWING** – A freestanding covered structure with a bench-style swing offering lake and sunset viewing

**SITWORK** – Paths and plantings to complement the new structures

ANTICIPATED PROJECT COST: \$115,000

Holden Parks Trust Commitment: \$100,000

Cleveland Metroparks Commitment: \$15,000 plus project management, design, in-house construction and ongoing operations and maintenance

