

ENGAGEMENT

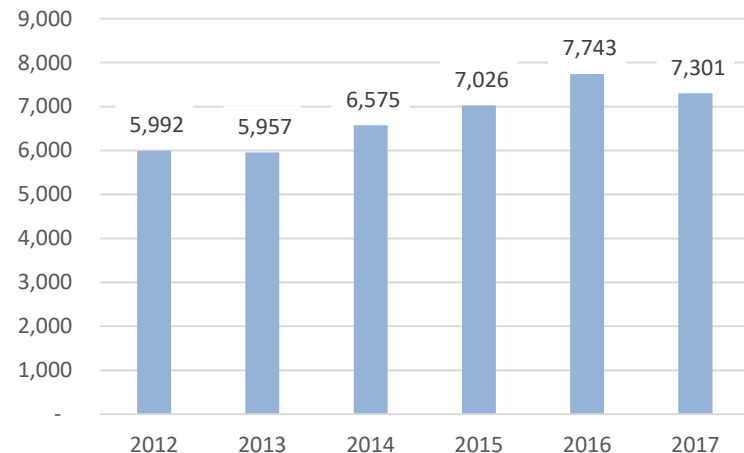


Expand and strengthen outdoor experiences and recreation opportunities consistent with the organization's mission, and keep pace with market trends to contribute to the region's attractiveness as a place to live, work and play.



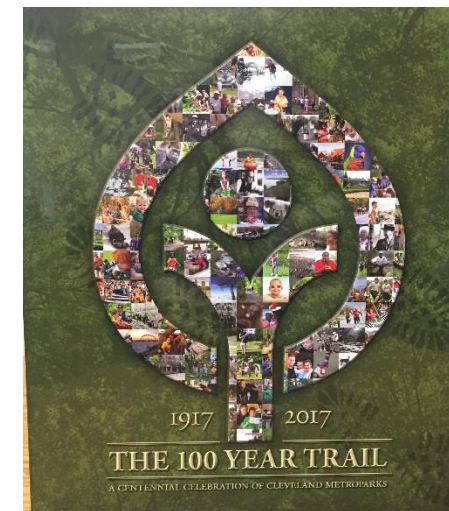
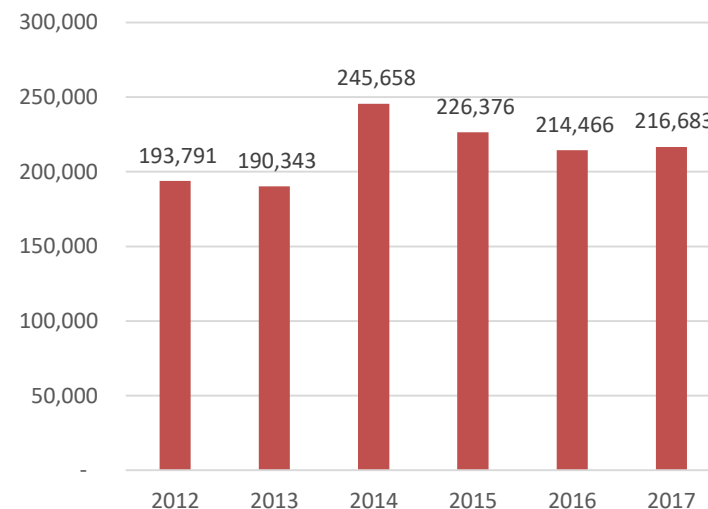
Outdoor Experiences

Number of Programs Provided
2012-2017



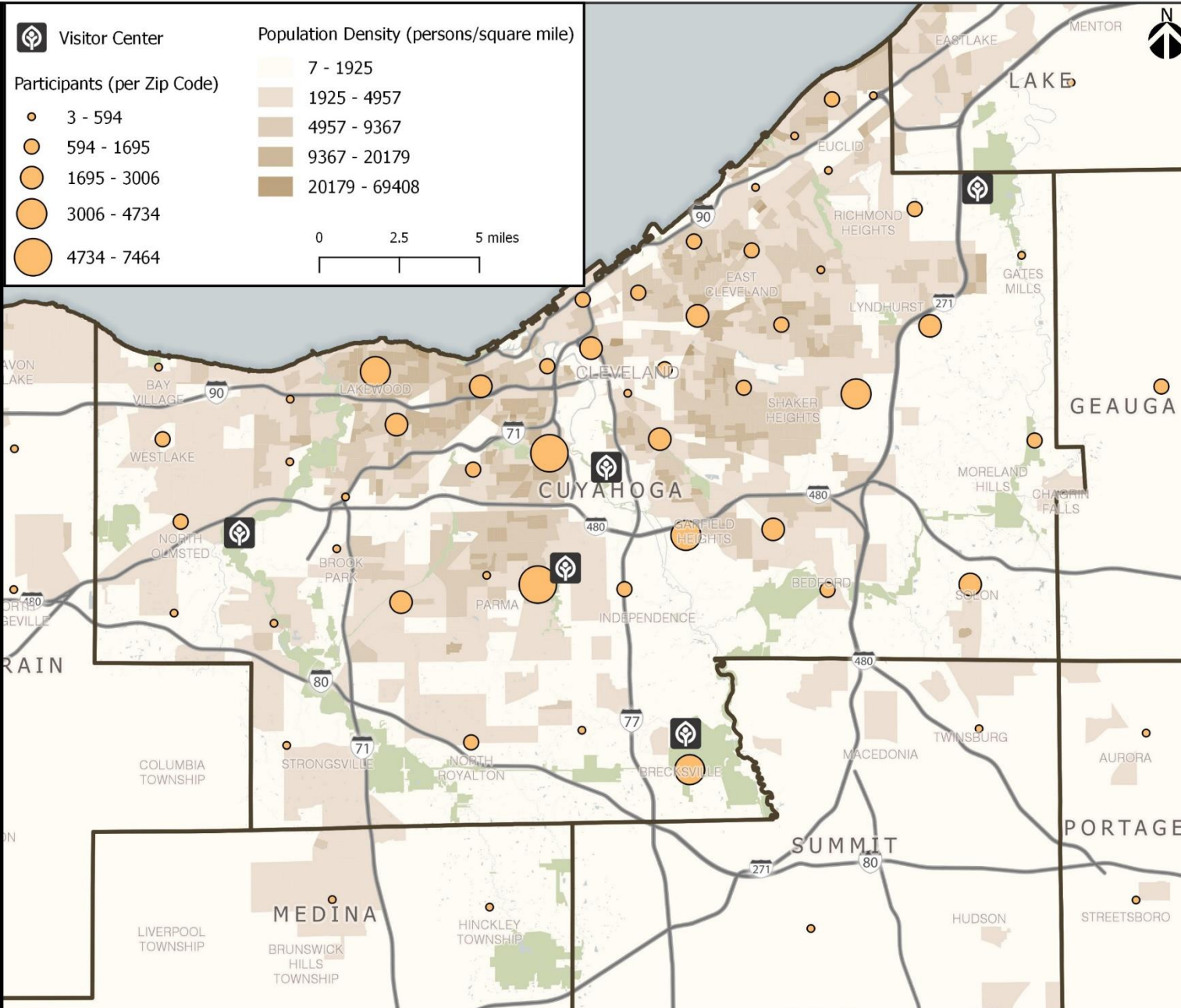
Outdoor Experiences

Program Attendance 2012-2017



- Watershed Stewardship Center opened in 2013
- Trailside Program Center classroom opens in 2018
- Fort Hill Stairs completed in 2016
- Centennial Book completed in 2016
- Interpretive boat tours on the Cuyahoga River
- Raptor Aviary opens in 2017





Education and Recreation Program Service Area

Employee Engagement

- North Coast 99 Best Places to Work
 - 12-time winner
 - Report benchmarks performance of local companies
- Gallup Employee Satisfaction Survey
 - Following up with action items
 - International statistics and comparisons
- Employee Service to Outside Organizations
 - Over 50 Employees volunteer their time to outside non-profit, community, and professional organizations in an official capacity
 - Service includes elected officials, environmental organizations, educational societies, and service on numerous boards



Zoo Educational Programs

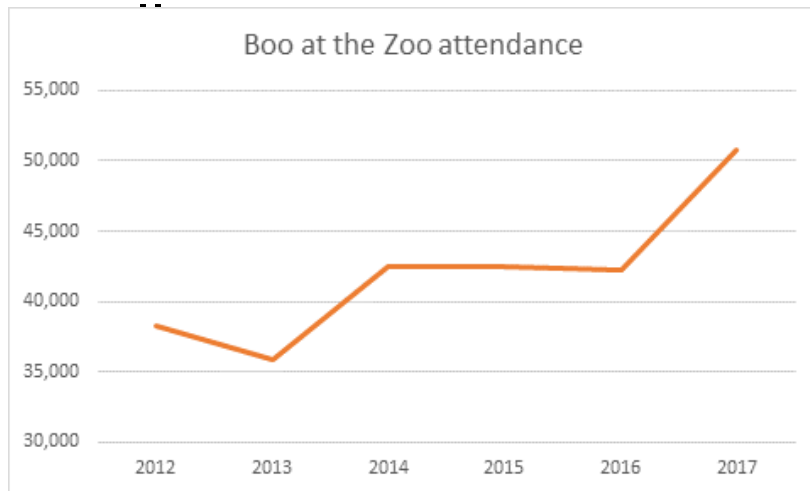
Year	Zoo Attendance	Program Attendance
2012	1,170,443	285,301*
2013	1,123,660	175,750
2014	1,059,632	241,481
2015	1,090,148	332,081**
2016	1,023,608	264,474
2017	1,042,564	238,762***



Special Events

Numerous special events programmed to draw visitors and provide unique experiences across the Park District

- Asian Lanterns
- Centennial Fireworks
- Birds of Prey Weekend
- History of Maple Sugaring



CONNECTIONS



Advance connections and trail systems that complete the Emerald Necklace and, in partnership with other agencies and communities, connect with local, state and regional trail networks, communities and places of interest.

Water Taxi



- New record day for passengers on Saturday, August 18, transported 1,952 people during the Flats Festival of the Arts.
- \$50,000 from Arcelor Mittal grant made it possible for the second year in a row to offer free rides.
- In August 2018, Water Taxi reached 42, 308 guests (over 2,000 since same time as last year).



Implementation Partners

- Trust for Public Land
- L.A.N.D. studio, Inc.
- Northeast Ohio Area Wide Coordinating Agency



Connecting Cleveland Partnership

- TPL & LAND studio
- Parks, greenways, water access points
- Rivergate, 2 segments of CFCT
- Leveraged Funding
- NOACA's support on TIGER grant

Cuyahoga Greenways Plan

- Regional trails and greenways plan
- Sponsored by Cuyahoga County Planning



CUYAHOGA
greenways



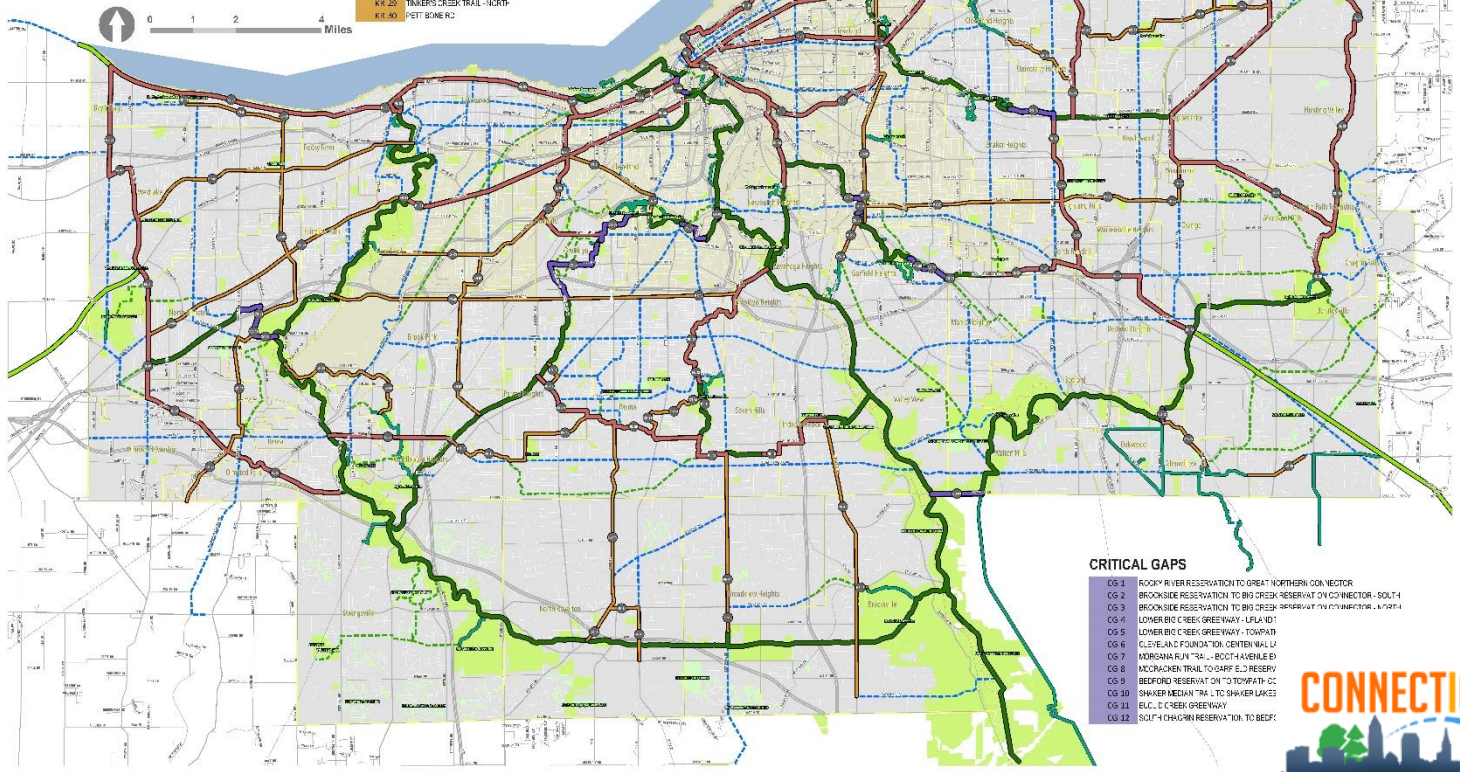
- GREENWAY PROJECTS**
- Critical Regional Gap
 - Important Regional Link
 - Key Supporting Route
 - Regional Bikeway/Trail: Future
 - Regional Bikeway/Trail: Existing
 - Off-Street: Existing
 - Off-Street: Supporting Route
 - On-Street: Supporting Route

KEY SUPPORTING ROUTES

- KR 1 WOLF ROAD
- KR 2 WILLIAMS BOULEVARD
- KR 3 CLARK ROAD
- KR 4 LORAIN ROAD
- KR 5 COLUMBIAN BOULEVARD
- KR 6 AGRICULTURE GREENWAY
- KR 7 SUTHERLAND GREENWAY
- KR 8 BELLEVUE ROAD / FULTON ROAD
- KR 9 BROOKPARK ROAD - WEST
- KR 10 BROOKPARK ROAD - EAST
- KR 11 FULTON ROAD / DENISON AVENUE
- KR 12 PENNINGTON ROAD - SOUTH
- KR 13 WEST CREEK GREENWAY / TRAIL FROM BROOKPARK
- KR 14 WEST CREEK RESERVATION TO CLEVELAND COLLEGE
- KR 15 RIDGE ROAD / BENNETT ROAD
- KR 16 ROYAL TON ROAD / STATE ROAD
- KR 17 GRANDVIEW ROAD - CENTRAL
- KR 18 BRECKVILLE ROAD
- KR 19 WARNER ROAD
- KR 20 E 98th STREET
- KR 21 HARVARD AVENUE (CENTRAL)
- KR 22 HARVARD AVENUE (EAST)
- KR 23 E 16th STREET
- KR 24 SUPERIOR AVENUE (EAST)
- KR 25 MCCLAMME ROAD
- KR 26 WARNER ROAD / LANDER ROAD
- KR 27 ACACIA CONNECTOR
- KR 28 WASHINGTON BOULEVARD
- KR 29 TIMBER CREEK TRAIL - NORTH
- KR 30 POTT SPENCER

REGIONAL LINKS

- RL 1 LAKEPROVIT GREENWAY WEST TO NORTH BIRD BE TRAIL
- RL 2 AUSTIN COLLEGE AND HOULDRILL STREAM RESERVATION
- RL 3 BRADLEY ROAD TO WEST
- RL 4 LAKEPROVIT GREENWAY (WEST 2)
- RL 5 LAKEPROVIT GREENWAY (WEST 1)
- RL 6 DE ROTT AVENUE
- RL 7 LAKEPROVIT RESERVATION TO BIRNEY PARK TO BROOKLYN METROPARK
- RL 8 LAKEPROVIT GREENWAY (EAST 1)
- RL 9 WEST CREEK GREENWAY TO BIG CREEK RESERVATION
- RL 10 WEST CREEK GREENWAY (SOUTH)
- RL 11 WEST CREEK GREENWAY
- RL 12 WEST CREEK GREENWAY (NORTH)
- RL 13 SLAVIC VILLAGE DOWNTOWN CONNECTOR
- RL 14 OPPORTUNITY CORRIDOR & IRON COURT CONNECTOR
- RL 15 C-HESTER AVENUE
- RL 16 SUPERIOR AVENUE 1/2 MILE CYCLETRACK
- RL 17 LAKEPROVIT GREENWAY (EAST 1)
- RL 18 LAKEPROVIT GREENWAY (EAST 2)
- RL 19 LAKEPROVIT GREENWAY (EAST 3)
- RL 20 BULL DO AVENUE
- RL 21 S BELVOIR BOULEVARD
- RL 22 AUSTIN FIELD ROAD / WARRENSVILLE CENTER ROAD
- RL 23 SUMMIT HILL RESERVATION TO CLEVELAND COLLEGE
- RL 24 GATES HILLS SOLICITORS TRAIL
- RL 25 GLEN CENTER ROAD
- RL 26 C-AGRIUM RIVER ROAD
- RL 27 SHAWNEE HILLS TO BIRNEY PARK



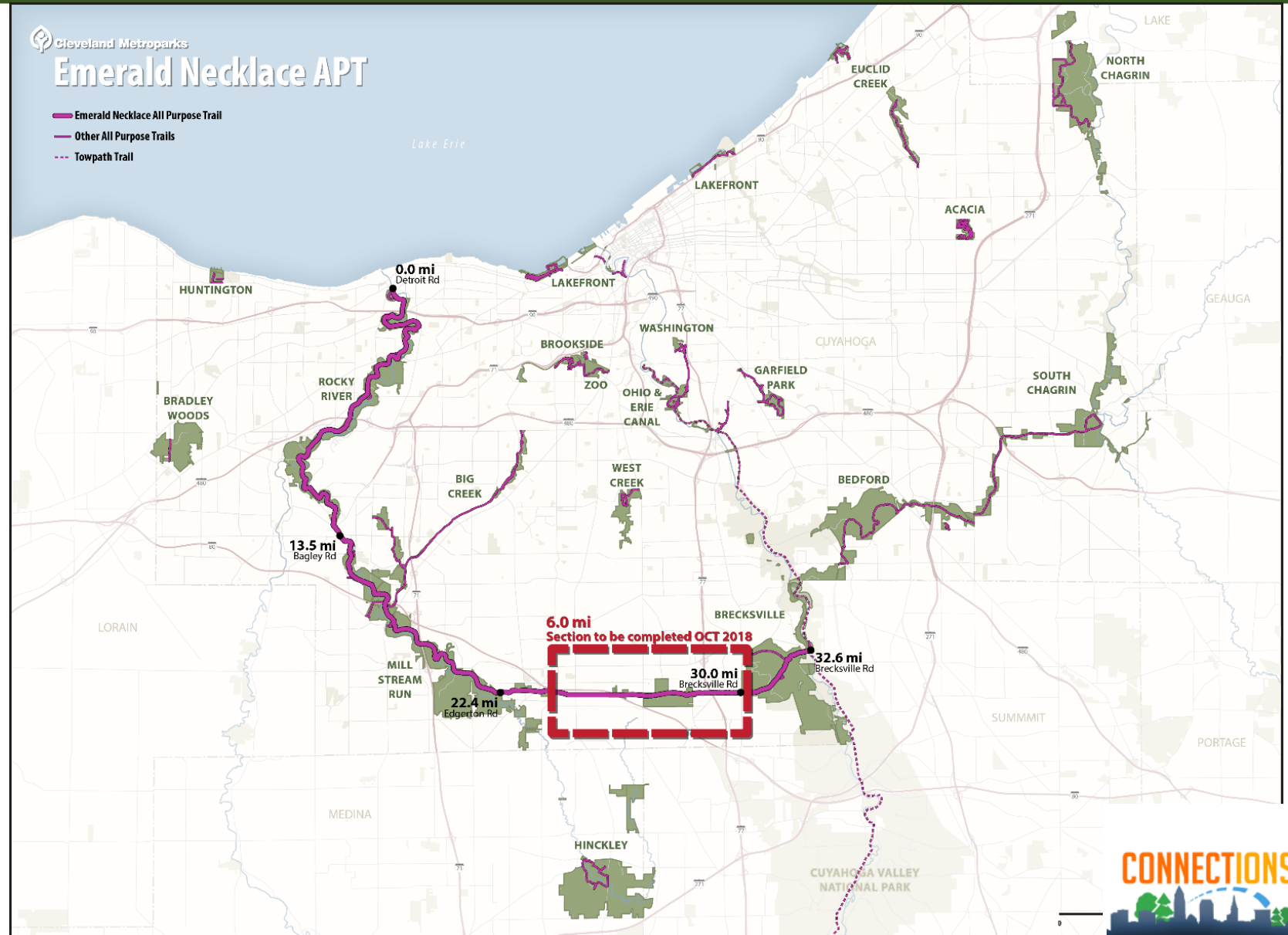
CRITICAL GAPS

- CG 1 ROCKY RIVER RESERVATION TO GREAT NORTHERN CONNECTOR
- CG 2 BROOKSIDE RESERVATION TO BIG CREEK RESERVATION ON CONNECTOR - SOUTH
- CG 3 BROOKSIDE RESERVATION TO BIG CREEK RESERVATION ON CONNECTOR - NORTH
- CG 4 LOWER BIG CREEK GREENWAY - LULA ID
- CG 5 LOWER BIG CREEK GREENWAY - TOWPATH
- CG 6 CLEVELAND FOUNDATION CENTER WALL LF
- CG 7 MIDCOURT FUTURE - BOOTH AVENUE ID
- CG 8 MIDCOURT TRAIL TO OFF E 2 RESERVATION
- CG 9 BEEFORD RESERVATION TO TOMPAT - CC
- CG 10 SHAKER METROPARK TO SHAKER LAKES
- CG 11 BULL DO CREEK GREENWAY
- CG 12 SOUTH CLEVELAND RESERVATION TO BEEFORD



All Purpose Trails

- 113 total miles in 2018
- 12.6 miles of new paved trails
- 9.0 miles of existing paved trails added through property acquisition (Acacia, Lakefront parks)



Natural Surface & Mountain Bike Trails

- 26 miles of new natural surface trails
 - includes Royalview, Forbes Woods, and new West Creek trail
- ~6 miles of reconstructed natural surface trails
 - includes Sylvan Loop, Johnson's Creek, and Dentzler Hill

