



Beyond Park  
Boundaries:

The Power of  
Partnerships

*Jennifer Grieser*

*Director of Natural Resources*

*Jennifer Hillmer*

*Invasive Plant Management Coordinator*



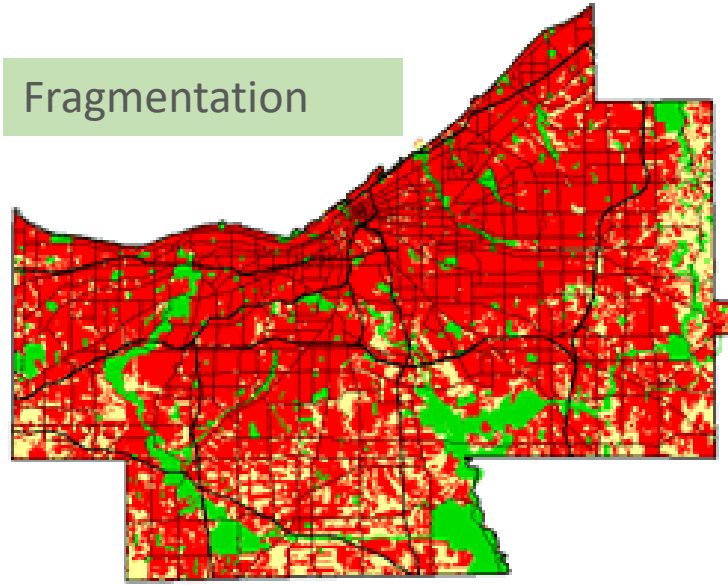


# Stressors



Invasive species

Fragmentation

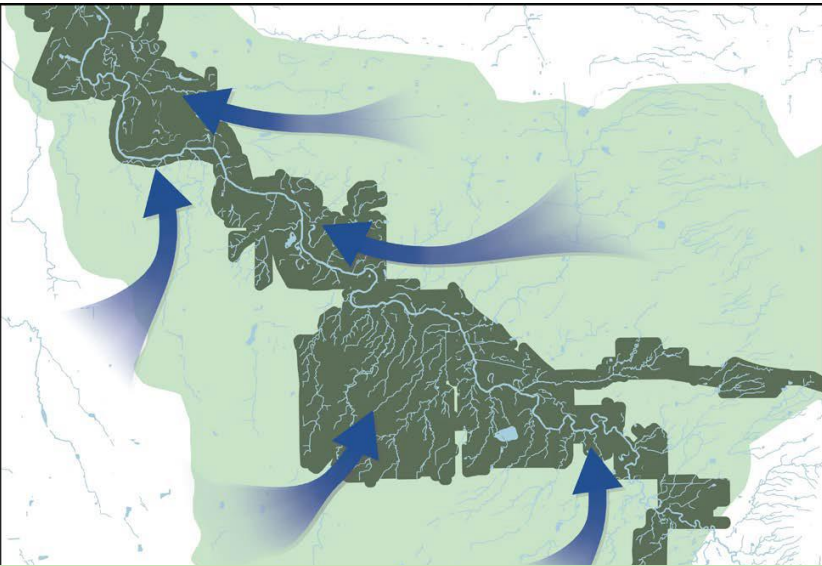


2011

New pests / pathogens



2016



Stormwater



Urban wildlife



# Strategic Stewardship



## Partnerships





# Lake Erie Allegheny Partnership for Biodiversity

## Mission:

- Identify, protect & restore biodiversity in the region
- Increase biodiversity awareness



# Lake Erie Allegheny Partnership

## Regional Vision:

- Preserve large blocks of natural land
- Link natural areas
- Reduce habitat fragmentation
- Reduce other stressors on nature
- Prepare for a changing climate



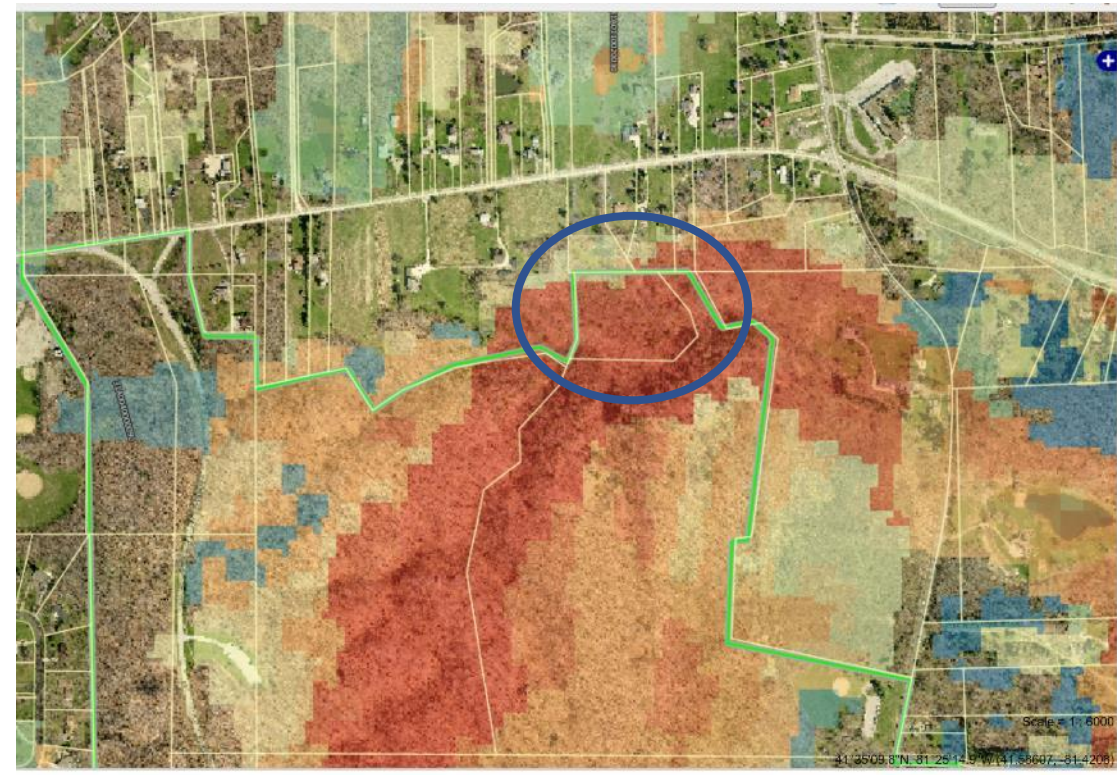


# Lake Erie Allegheny Partnership



## Benefits

- Collaborate on regional issues threatening biodiversity
- Leverage strengths & existing resources
- Secure funding for land conservation projects





# Lake Erie Allegheny Partnership



## Example Activities

- Conservation Fund
- Legacy of Living Places
- Native Plants of the Year
- White-tailed Deer Position Statement
- West Virginia White Monitoring

2019



**New Jersey Tea**  
*Ceanothus americanus*

This native shrub is excellent in attracting hummingbirds.

FACT SHEET



**Prairie Dropseed**  
*Sporobolus heterolepis*

Adds tall, beautiful wisps of green to your garden.

FACT SHEET



**Turtlehead**  
*Chelone glabra*

Host plant for the Baltimore Checkerspot butterfly!

FACT SHEET

### Beech-Maple Forest

Beech-Maple Forests dominated by sugar maple and American beech were the most common forest type in the Ohio Valley from 1700 to 1850. Sugar maple is the largest tree in the forest, reaching 100 years old. The canopy is dense, with a thick layer of leaf litter on the forest floor. The forest floor is covered with a thick layer of leaf litter, and a moderate to well-developed ground layer of non-woody deciduous plants. Interest also occurs in the canopy.

The quality of forests of this community has been dominated by plants such as yellow pines, oaks, and aspens. The forest floor is dominated by plants such as ferns, blueberries, and other plants. The forest floor is covered with a thick layer of leaf litter, and a moderate to well-developed ground layer of non-woody deciduous plants. Interest also occurs in the canopy.

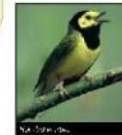
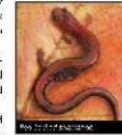
The forest floor is covered with a thick layer of leaf litter, and a moderate to well-developed ground layer of non-woody deciduous plants. Interest also occurs in the canopy.

The forest floor is covered with a thick layer of leaf litter, and a moderate to well-developed ground layer of non-woody deciduous plants. Interest also occurs in the canopy.



### Where to Go

- All in the Valley of the Ohio River, Cleveland, Ohio (Cleveland State University)
- Erie, Ohio (Erie State University)
- Healthy Ecosystems, Cleveland State University (Cleveland State University)
- Forests of the Ohio Valley, Cleveland State University (Cleveland State University)
- The Ohio State University, Columbus, Ohio (The Ohio State University)

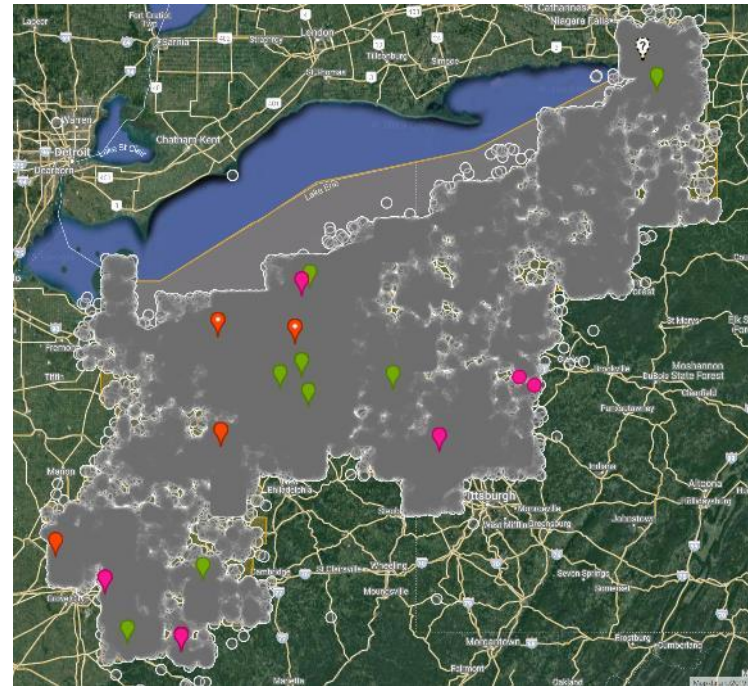
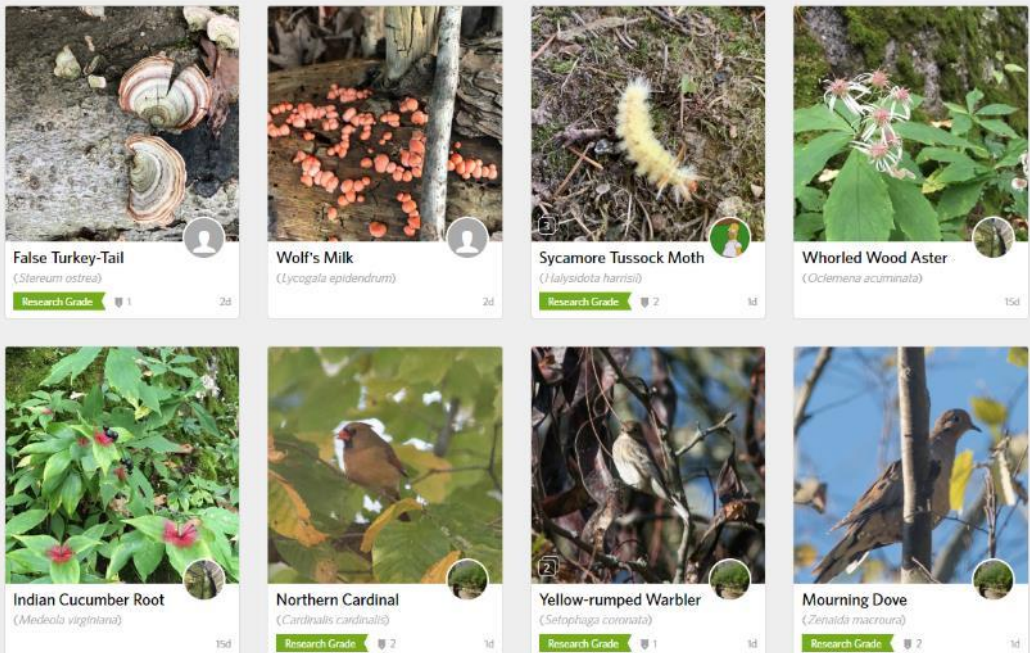




# Lake Erie Allegheny Partnership

## Outcomes

- Collectively, the Partnership has protected **330,000 acres**
- Regionally specific climate models
- Important grants – Ex. Beech Leaf Disease, Hemlock Woolly Adelgid
- Engaged conservation citizens – iNaturalist
  - 405,092 observations, 11,247 species, 14,302 identifiers

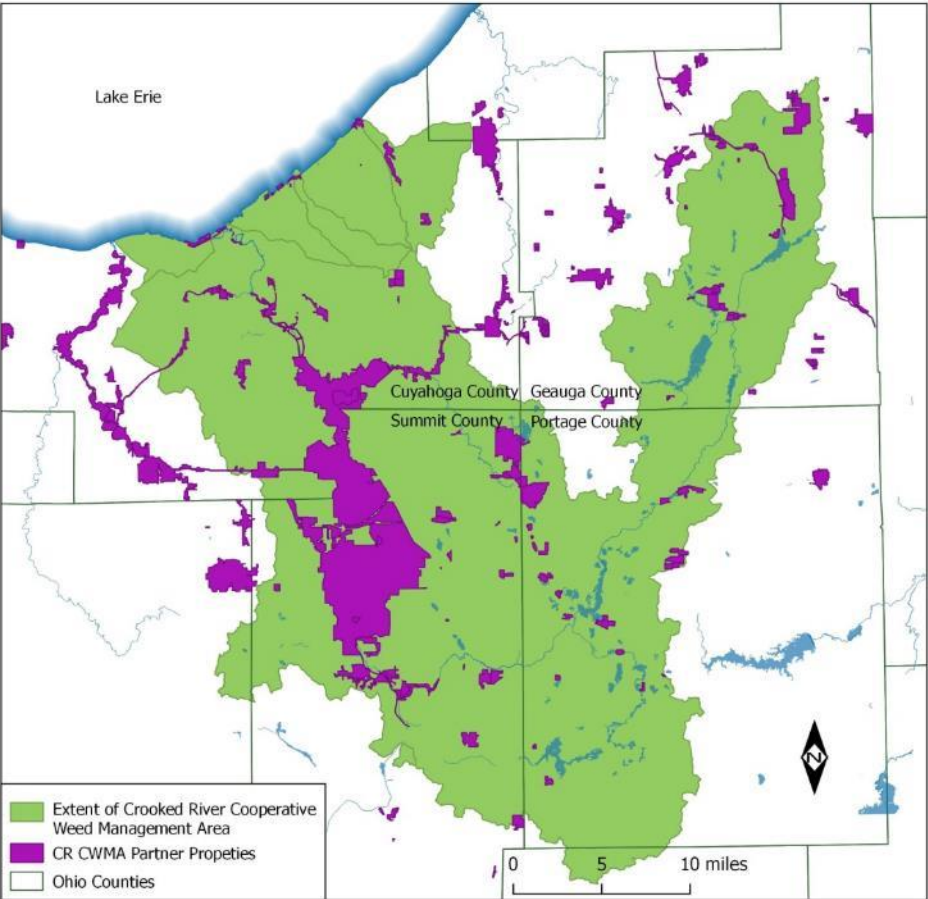


| Common Name          | Capabil45   |
|----------------------|-------------|
| white oak            | Very Good   |
| bitternut hickory    | Very Good   |
| yellow-poplar        | Very Good   |
| shagbark hickory     | Very Good   |
| sugar maple          | Very Good   |
| northern red oak     | Very Good   |
| American elm         | Very Good   |
| black walnut         | Good        |
| boxelder             | Good        |
| green ash            | Good        |
| red maple            | Good        |
| sweetgum             | Good        |
| black oak            | Fair        |
| Osage-orange         | Fair        |
| cucumbertree         | Fair        |
| eastern hophornbeam; | Fair        |
| American beech       | Fair        |
| pin oak              | Fair        |
| silver maple         | Fair        |
| blackgum             | Fair        |
| white ash            | Fair        |
| black cherry         | Fair        |
| black willow         | Poor        |
| pignut hickory       | Poor        |
| quaking aspen        | Poor        |
| slippery elm         | Poor        |
| black locust         | Poor        |
| yellow birch         | Poor        |
| American hornbeam; m | Poor        |
| sycamore             | Poor        |
| swamp white oak      | Poor        |
| sassafras            | Poor        |
| eastern cottonwood   | Poor        |
| American basswood    | Poor        |
| bigtooth aspen       | Poor        |
| serviceberry         | Very Poor   |
| eastern hemlock      | Very Poor   |
| eastern white pine   | Very Poor   |
| black ash            | Lost        |
| flowering dogwood    | New Habitat |
| mockernut hickory    | New Habitat |
| eastern redbud       | New Habitat |
| red mulberry         | New Habitat |
| shingle oak          | New Habitat |
| hackberry            | New Habitat |
| honeylocust          | New Habitat |
| chinkapin oak        | New Habitat |
| eastern redcedar     | New Habitat |
| common persimmon     | New Habitat |



# Crooked River Cooperative Weed Management Area (CWMA)

- A regional partnership working to control invasive plants and support native plant communities in the Cuyahoga watershed.





# Crooked River CWMA

## Benefits

- Shared goals
- Shared knowledge
- Shared seasonal crews
- Shared equipment
- Mobile cache for staff & volunteer events





# Crooked River CWMA

## Example Activities

- Invasive Plant Management Workshops
- Survivor Camp @ CVNP
- Group Work Days
- Site Tours
- Website: <http://crcwma.org>





# Crooked River CWMA

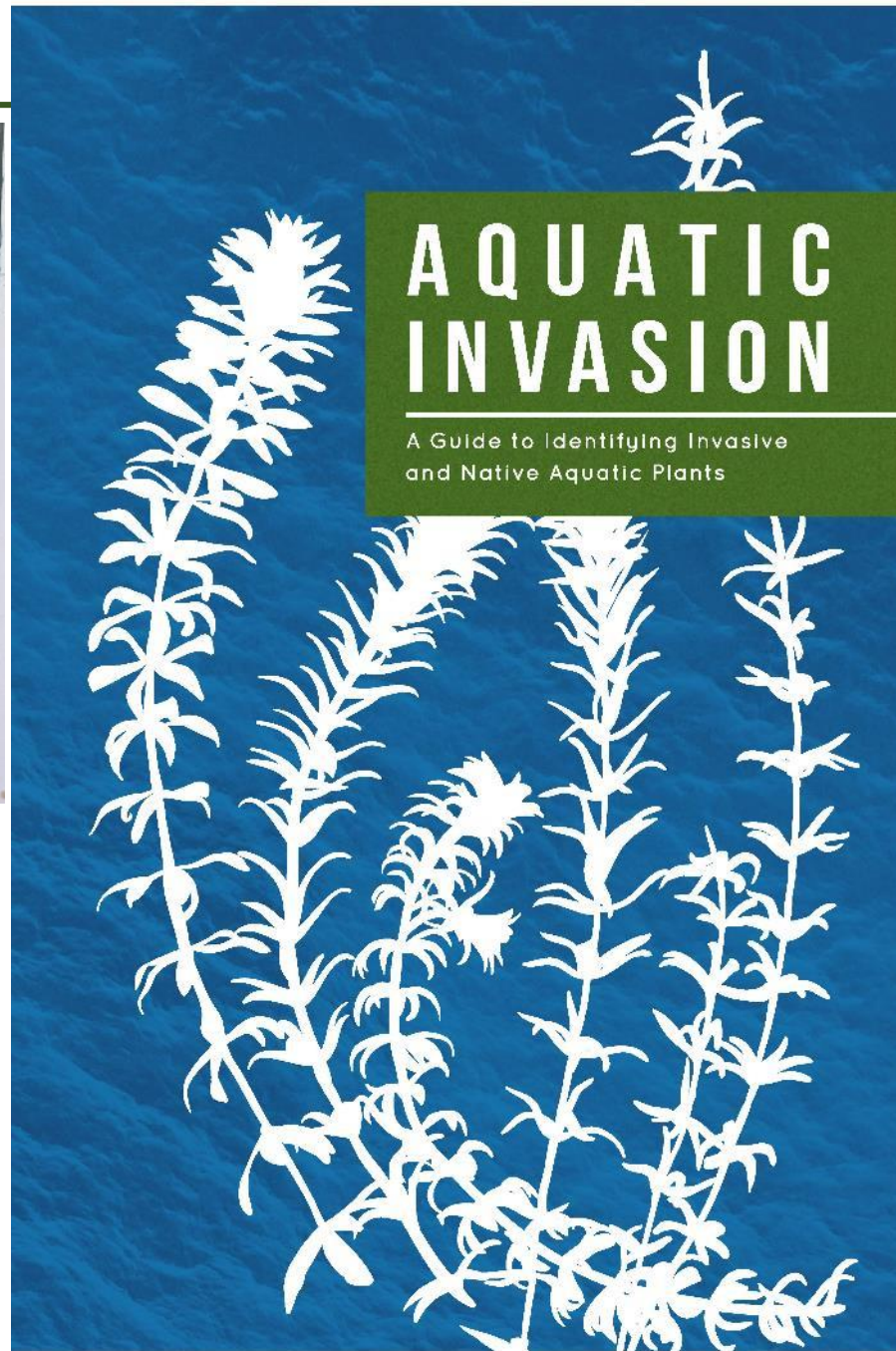
## Outcomes

- Treatment across 2,500+ acres
- Early detection survey across 2,200+ acres
- Successful grants: Great Lakes Restoration Initiative, National Park Service
- Professional development

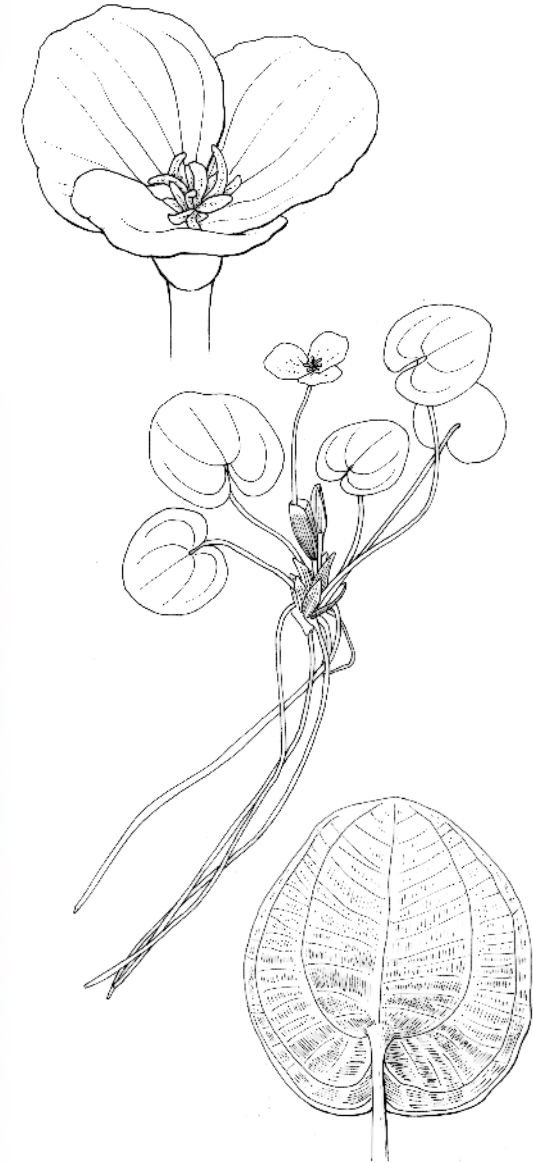




# Crooked River CWMA



European frog bit



Illustrations by Melissa Logies

Thank you to the  
Great Lakes Restoration Initiative  
for getting this partnership started!

