



Cleveland Metroparks®

**FIND YOUR PATH**

**GARFIELD PARKWAY CULVERT**

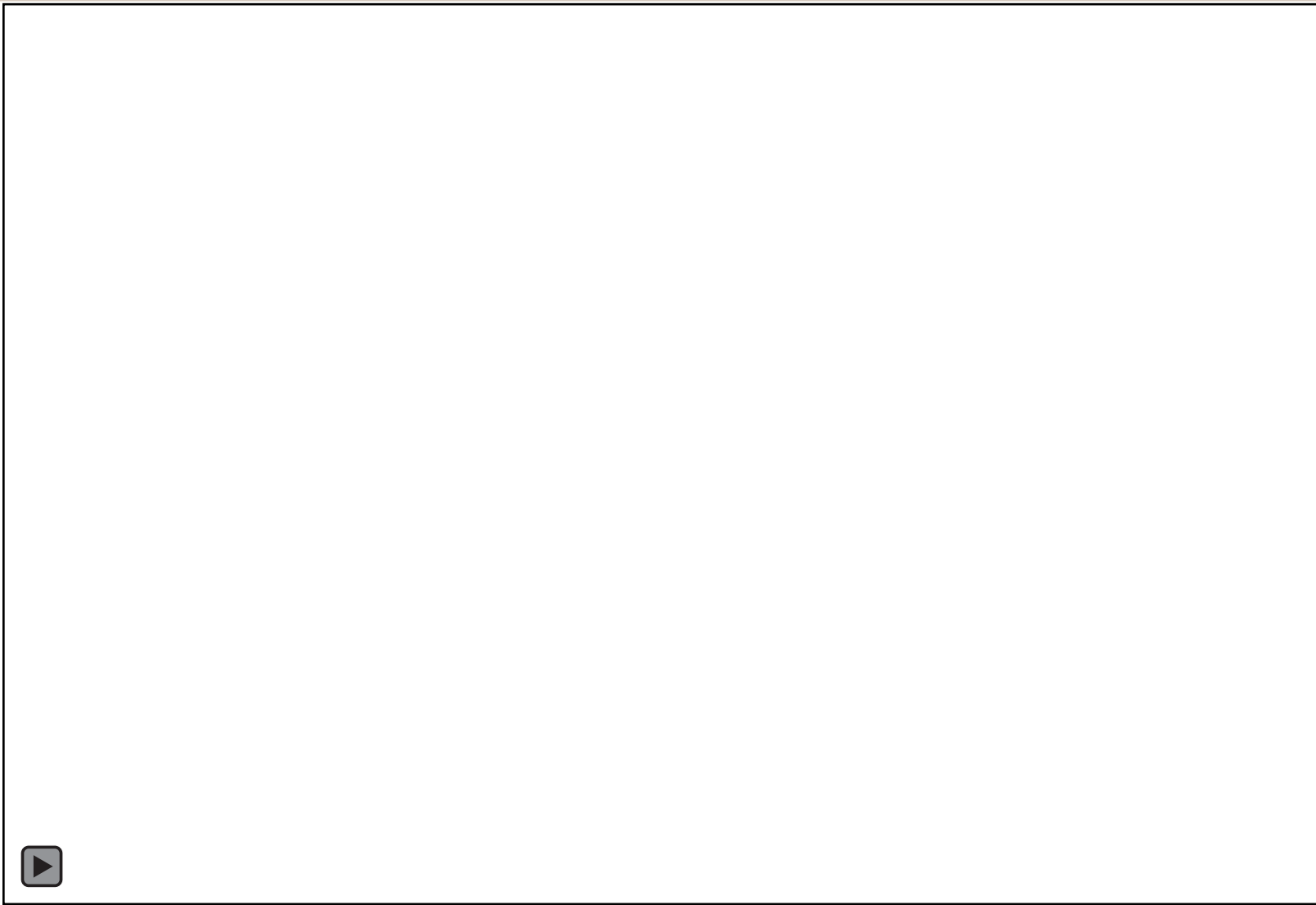
**Over Mill Creek**

Structure No. 1890808

Municipal Bridge Funds (SFY 2025) Presentation

September 21, 2023

# Project Location



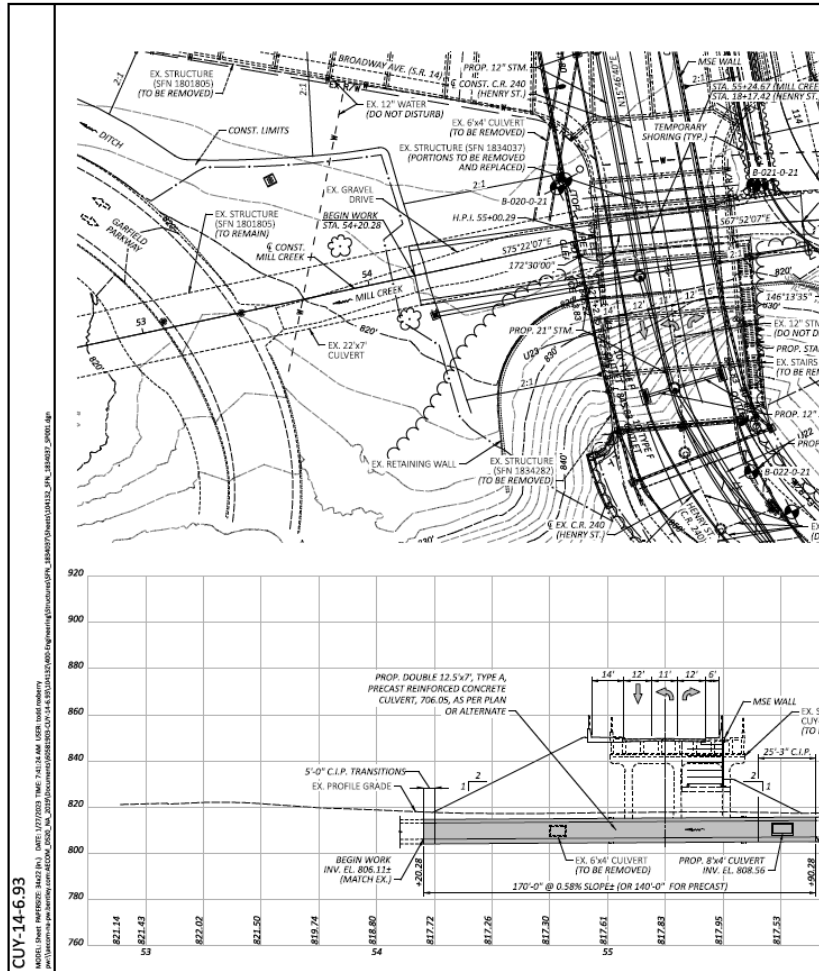


# Project Location



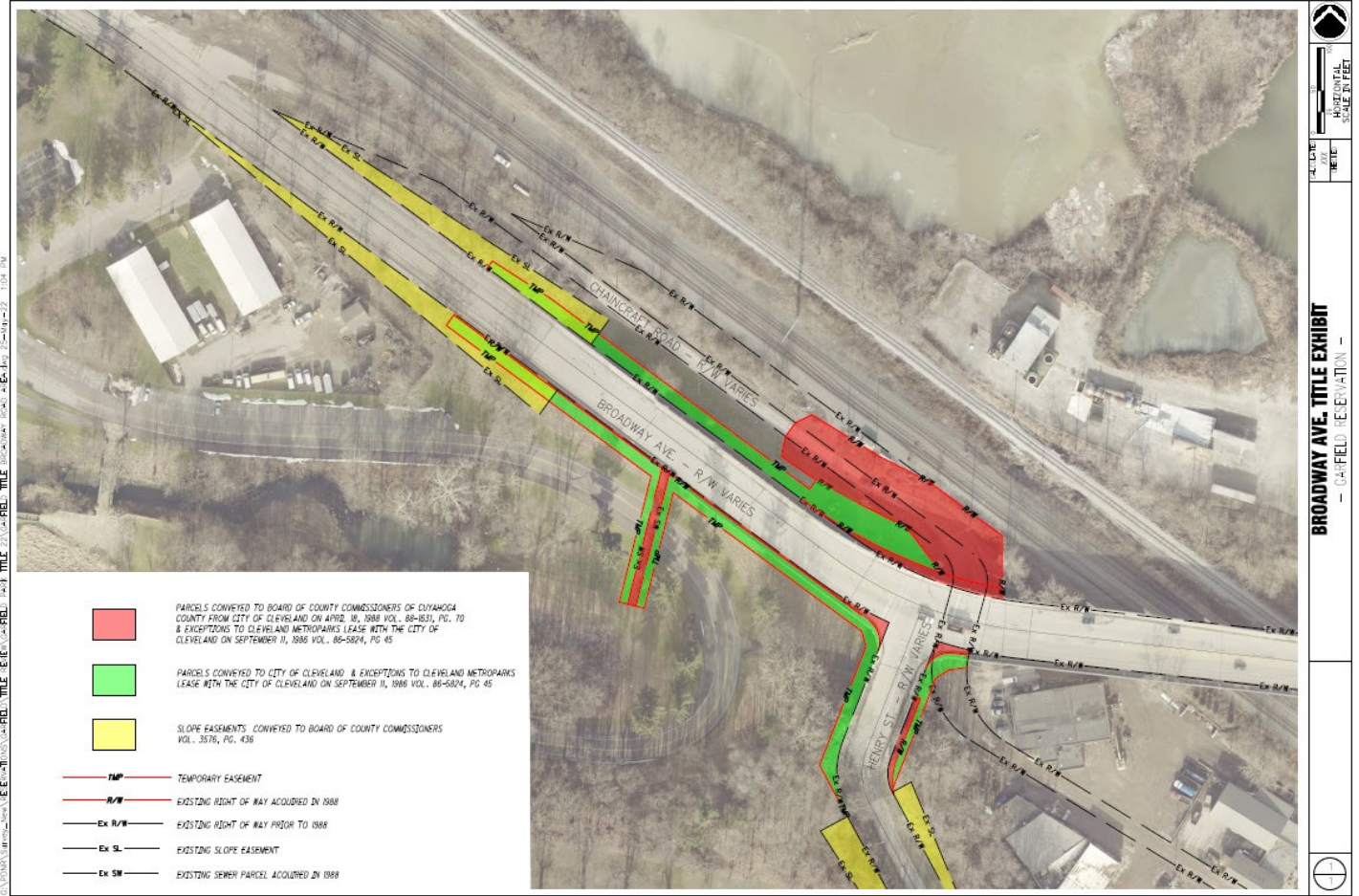
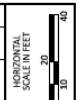


# ODOT's CUY-14-6.930; PID 10413



BENCHMARK DATA			
BM1 STA.	368+64.50	ELEV.	253.70
		OFFSET	35.95', RT.
BM2 STA.	382+56.95	ELEV.	259.43
		OFFSET	5.75', RT.

FOR ADDITIONAL BENCHMARK INFORMATION, SEE ROADWAY PLAN SHEET P.3.



- PARCELS CONVEYED TO BOARD OF COUNTY COMMISSIONERS OF CUYAHOGA COUNTY FROM CITY OF CLEVELAND ON APRIL 18, 1888 VOL. 88-1631, PG. 70 & EXCEPTIIONS TO CLEVELAND METROPARKS LEASE WITH THE CITY OF CLEVELAND ON SEPTEMBER 11, 1986 VOL. 86-5824, PG. 45
- PARCELS CONVEYED TO CITY OF CLEVELAND & EXCEPTIIONS TO CLEVELAND METROPARKS LEASE WITH THE CITY OF CLEVELAND ON SEPTEMBER 11, 1986 VOL. 86-5824, PG. 45
- SLOPE EASEMENTS; CONVEYED TO BOARD OF COUNTY COMMISSIONERS VOL. 3576, PG. 436
- TEMPORARY EASEMENT
- EXISTING RIGHT OF WAY ACQUIRED IN 1888
- EXISTING RIGHT OF WAY PRIOR TO 1888
- EXISTING SLOPE EASEMENT
- EXISTING SEWER PARCEL ACQUIRED IN 1888

CUY-14-6.93

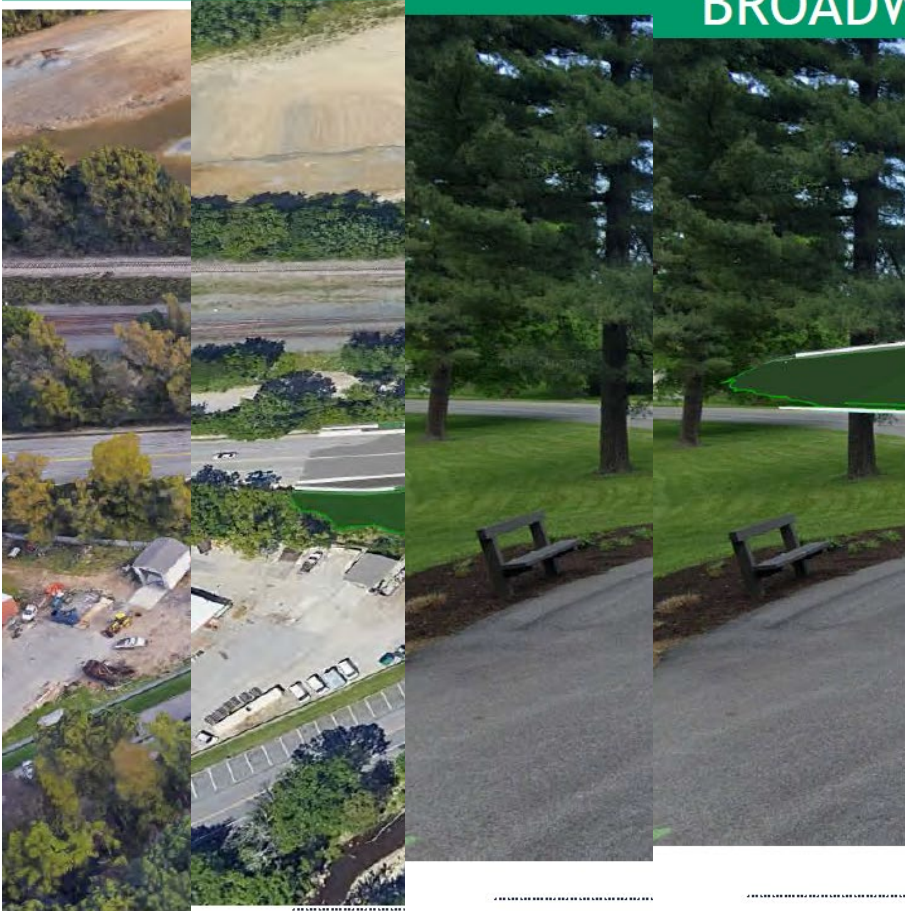
BROADWAY AVE. TITLE EXHIBIT  
— 04-FIELD ELEVATION —



# ODOT's CUY-14-6.930; PID 10413

1 - § 1 - 2: 1 - EXIS

1-2:1 § PROPOSED 15' WIDE/ 8' EFFECTIVE (CONSTRAINED)  
BROADWAY SHARED USE PATH (VIEW LOOKING SE)



3 | 4 | 6 | Clevel 7 | Clevel



Broadway Av looking southeast. (Shared use path on right.)

14 | Cleveland Metro Parks Coordination- 104132



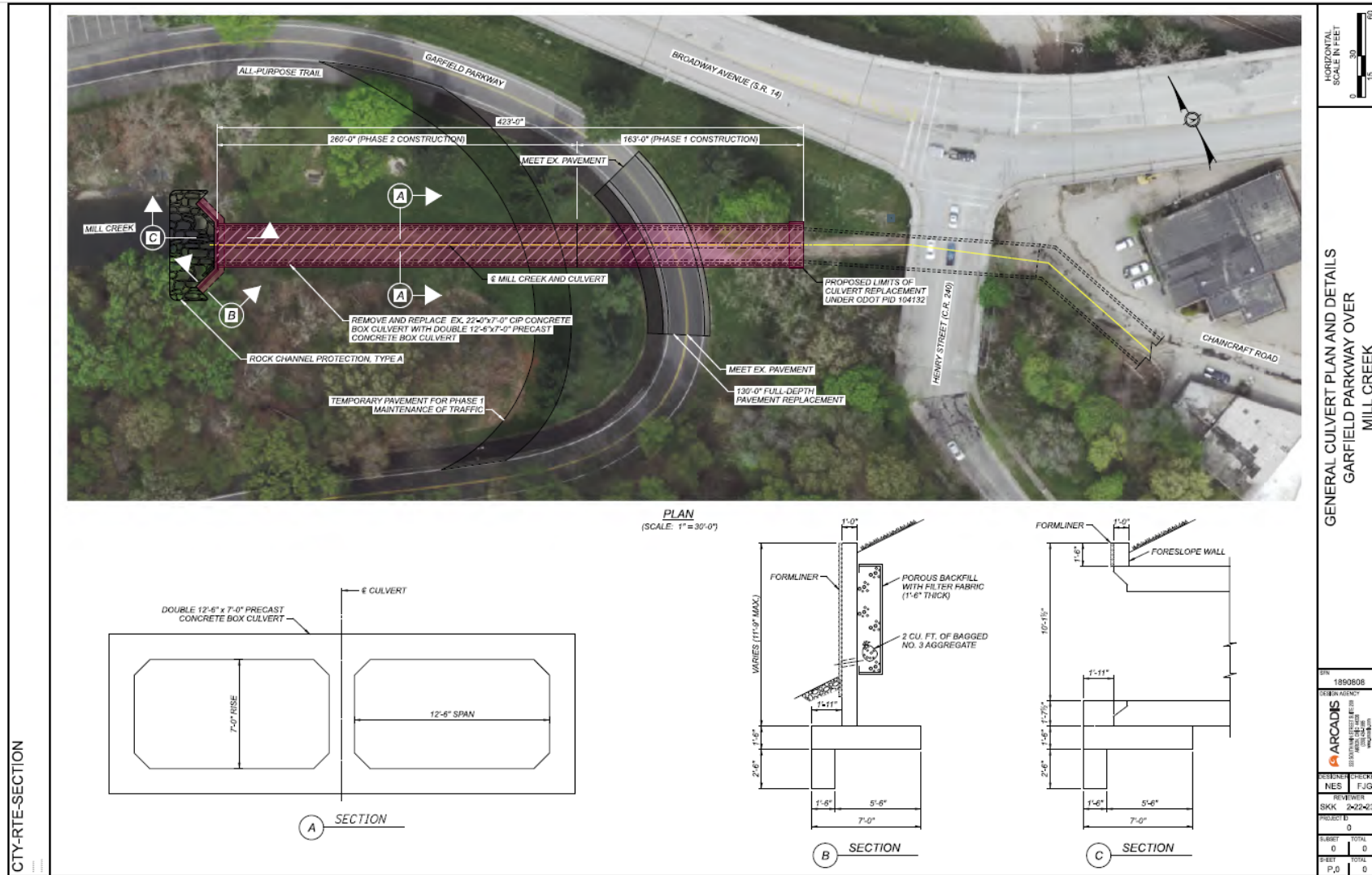


# Culvert Location





# Concept Plan & Section







Cleveland Metroparks®

**FIND YOUR PATH**

**GARFIELD PARKWAY CULVERT**

**Over Mill Creek**

Structure No. 1890808

Municipal Bridge Funds (SFY 2025) Presentation

September 21, 2023